



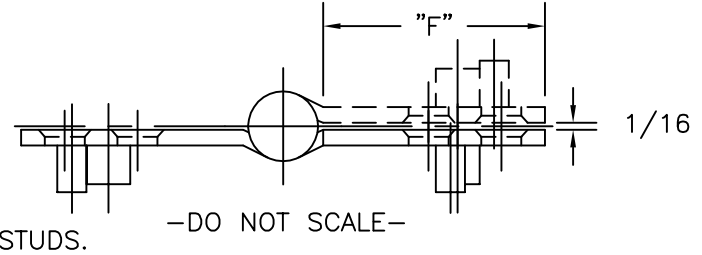
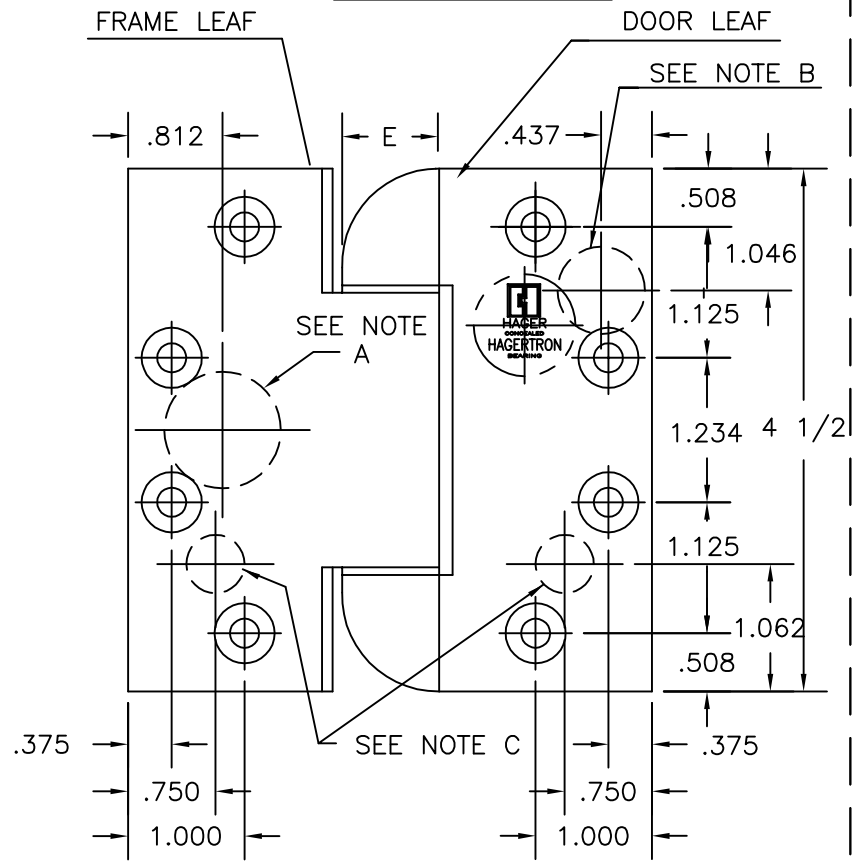
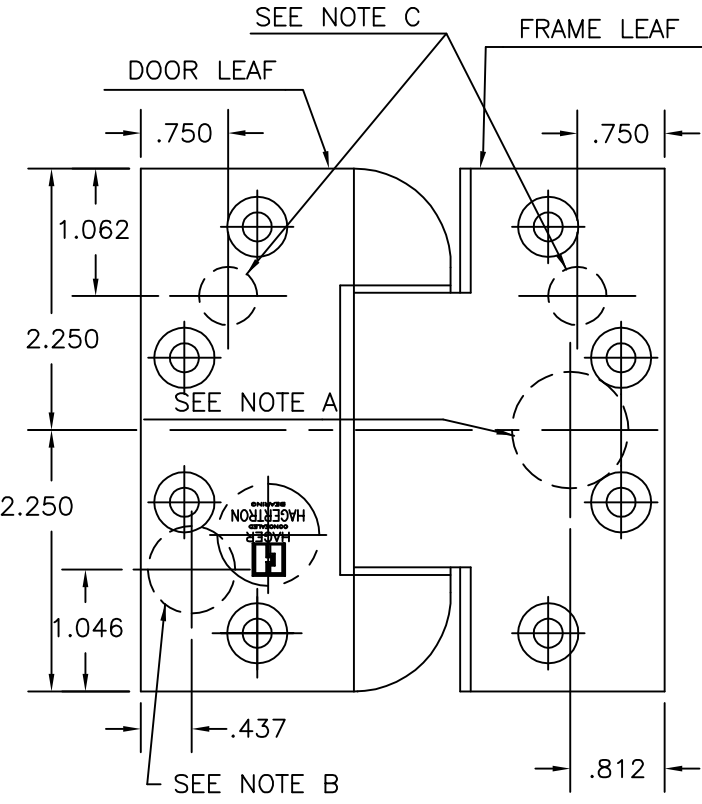
SPECIAL HEAVY WEIGHT
 FULL MORTISE REVERSE
 SAFETY STUD TEMPLATE HINGES
 ELECTRIC THROUGH WIRE TYPE ETW
 SIZES: 4 1/2 x 4 1/2

Template No. T554

No.	REVISION	BY	DATE
3	ECO CT08039	DW	11.10.08
4	ADDED LH	SLJ	05.28.09
5	MIR ELEC COS	SLJ	07.26.10
6	CORRECT LEAF ID'S	SLJ	08.18.11
7	ECO CT12001	DW	08.13.12
8	ECO CT12001	SLJ	08.14.12

RIGHT HAND

LEFT HAND



DRILLING INSTRUCTIONS

NOTE A:
 DRILL AND DEBURR ϕ 1"
 HOLE IN FRAME REINFORCEMENT
 FOR THROUGH WIRES.

NOTE B:
 DRILL AND DEBURR ϕ 3/4"
 HOLE IN DOOR REINFORCEMENT
 FOR THROUGH WIRES.

NOTE C:
 DRILL ϕ 5/8" HOLES
 IN DOOR AND FRAME
 REINFORCEMENT FOR STUDS.

CATALOG NUMBER	METAL GAUGE	(E) KNUCKLE DIAMETER	(F) DISTANCE FROM EDGE OF LEAF TO SWAGE LINE
STAINLESS STEEL HINGES			4 1/2 x 4 1/2
HB953RSS-ETW	.187	7/8	1 13/16
AB750RSS-ETW	.180	45/64	1 7/8
AB850RSS-ETW	.180	45/64	1 13/16

ALL DIMENSIONS ARE IN INCHES.
 Machine Screw Size- 1/4-20 x 1/2" F.H.

NOTE: This hinge is intended to be used in the center position. Hospital type template hinges conform to the above screw size and location. They are designated by "HT" to catalog number. Hager template hinges are made in size and with screw holes located to conform to ANSI-A156.7.



HAGER RESERVES THE RIGHT TO MAKE DESIGN CHANGES WITHOUT NOTICE. CALL HAGER ENGINEERING AT 1-800-325-9995 FOR LATEST REVISION DATE OF TEMPLATE.

HAGER COMPANIES
 139 VICTOR STREET
 P.O. BOX 12300
 ST. LOUIS, MISSOURI 63157-0300