



Back To Back Mounting Installation Instructions

PUSH/PULL SETS INCLUDES THE FOLLOWING

- (2) PULL UNITS
 - (1) PUSH SIDE 3/8"-16 LEFT HAND THREADS
(3/8" SHORTER FOR SPANNER NUT)
 - (1) PULL SIDE 3/8"-24 RIGHT HAND THREADS
- (2) SPANNER NUTS
- (2) 3/8" SQ. SPANNER STUDS
- (1) SPANNER WRENCH

ADDITIONAL HARDWARE FOR GLASS DOORS

- (4) CORK WASHERS
- (2) PLASTIC GROMMETS FOR HOLES IN GLASS

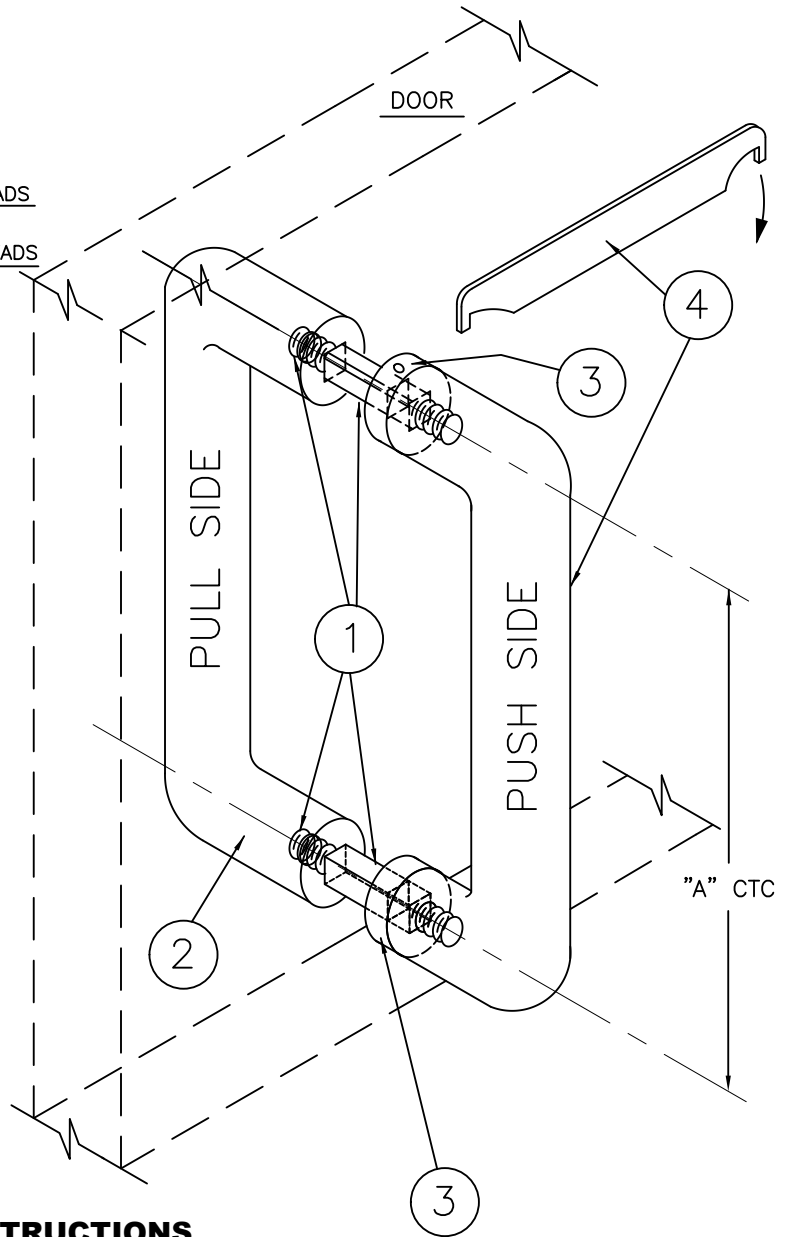
PART #	DIA.
13	3/4"
14	1"
20	1 1/4"

"A" CTC				
E	G	J	L	Q
6"	8"	10"	12"	18"

DOOR PREP

GLASS THICKNESS	HOLE DIA.
1/4"	3/8"
3/8"	5/8"
1/2"	5/8"
3/4"	7/8"
METAL DOORS	7/16"

DOOR THICKNESS	SPANNER STUD LENGHT
1/2"	1 7/8"
1 3/8"	2 5/8"
1 3/4"	3 1/8"
2 1/4"	3 5/8"
2 3/4"	4 1/8"



BACK TO BACK MOUNTING INSTRUCTIONS

- ① THREAD SPANNER STUDS (3/8"-24) TWO TO FOUR TURNS INTO PULL SIDE ENDS.
- ② INSERT PULL SIDE THROUGH HOLES IN DOOR.
- ③ SLIP SPANNER NUTS ONTO STUD ENDS.
- ④ THREAD PUSH SIDE UNIT TO STUDS USING SPANNER WRENCH PROVIDED.
- ⑤ TO PREVENT "RACKING", KEEP PUSH SIDE UNIT PARALLEL TO DOOR FACE BY TAKING EQUAL TURNS ON SPANNER NUTS.

HAGER COMPANIES
 139 VICTOR STREET
 P.O. BOX 12300
 ST. LOUIS, MISSOURI 63157-0300
 www.hagerco.com

FORM NUMBER: 17370091

REVISION #: 1

REVISION: TA08033

DATE: 10.07.08

BY: SLJ