

A close-up photograph of a hand holding a microphone, set against a background of a stage or performance area. The entire image is heavily tinted with a vibrant red color. The hand is positioned in the lower-left quadrant, gripping the microphone. The background shows blurred elements of a stage, including what appears to be a microphone stand and other equipment, all bathed in the same red light.

Product Lines
OVERVIEW



HAGER COMPANIES

PRODUCT LINES OVERVIEW

For 170 years, we've fostered relationships with our channel partners creating value for our customers and stakeholders. We continue to evolve to meet their needs and the marketplace demands. Beginning with Charles Hager, we have designed a culture around our customers — from specification writing, estimating, ordering, delivery, and invoicing, we keep the experience simple and transparent.

Hager Companies is committed to being your one source for door hardware, providing complete customer satisfaction in offering products that are error free, delivered on time, and competitively priced. In addition to our internal quality processes, Hager Companies participates in the BHMA Certification Program that was developed as a means for producers of builder's hardware to indicate compliance with A156 ANSI standards sponsored by BHMA. Participating manufacturers certify compliance with the standards based on a continuing program of passing the prescribed tests that include cycle, operational, strength, security, and finish test requirements. This provides our customers and end-users peace of mind knowing they can order a complete door hardware package, no matter the size or type of project, from one source.



Commercial Hinges

The Hager name is synonymous with commercial hinges. In fact, they are the industry's premiere designer and manufacturer of commercial hinges, with a product line that offers one of the widest varieties of sizes, options and finishes — many of which meet or exceed ANSI standard — with legendary quality, time-tested durability, and consistent superior performance.



Door Controls

Hager door closers offer architects, contractors, and building owners a superior product with proven reliability. In fact, our 5100, 5200, and 5300 Series Grade 1 models are all BHMA certified and backed by a lifetime warranty, which makes them a no-risk choice for virtually any building type. If a clean line is called for, our track arms are available for a more aesthetically pleasing application. When a closer isn't needed but the door still needs to be controlled and protected, our overhead door holders and stops can do the job. Electromagnetic door holders are designed for practically any remote door release application.



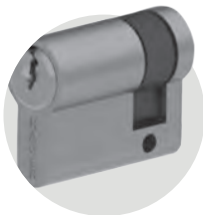
Electrified Hardware

Hager's line of low energy power operators and accessories are designed to provide the essential ADA functionality for interior applications such as hospitals, schools, government buildings, offices, and any other openings that require ADA compliancy. Hager offers many types of electric strikes, exit switches and electromagnetic locks and power supplies to control the electrified products to help secure your building. Our standard hardware, hinges, locks and exit devices are able to be electrified as well.



Electronic Access Control

Electronic access control systems can be deployed in almost any type of facility, with a varying range of system and product benefits. Depending on what is expected and needed from the system, traditional electronic access control locking solutions can be a significant investment. The HS4 platform is a robust and dynamic solution that can provide tailored benefits to nearly every type of installation at a fraction of the upfront and ongoing costs.



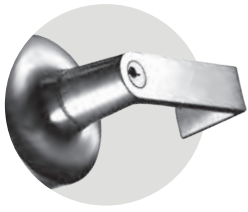
Euroline

Today, Hager products are found all over the world, from our traditional ANSI products to our wide range of European hardware. Hager's line of European hardware includes locking hardware, profile cylinders, exit devices, door closers, and door trim. They are available in a variety of styles and finishes and many are tested and certified to international standards.



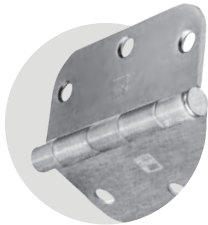
Exit Devices

Every Hager exit device is designed and engineered to ensure years of superior performance in a variety of commercial applications. They use fewer moving parts, are constructed with high quality materials, and are backed by industry leading warranties. They meet or exceed accepted domestic and international standards, are UL listed for panic or fire-rated hardware, and comply with ANSI A117.1 for accessible buildings and facilities. Hager exit devices are non-handed and packaged for convenience and versatility with thru-bolts, slotted strikes and both wood and machine screws. Our escutcheon trim come with a variety of lever designs, pull plate trim, and anti-vandal trim options, and are available in multiple functions.



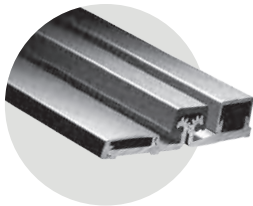
Locks

Hager's lock product line offers a wide range of Grade 1, Grade 2, and Grade 3 products including mortise, cylindrical, tubular, interconnected, and deadlocks that meet most applications and specification requirements. Backed by a lifetime warranty, Hager locks are engineered to the highest quality and extensively tested to ANSI standards and BHMA certification requirements. In addition, the majority of locks comply with ADA requirements outlined in ANSI A117.1 and are UL Listed up to 3 hours for "A" label doors.



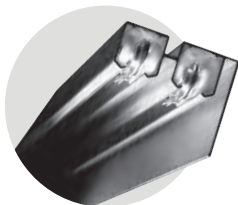
Residential

Hager residential hinges enhance the design of any home, with finishes that range from bright brass and antique bronze, to satin nickel and bright chrome. Homeowners also gain additional peace of mind with Hager because of features such as interlocking security stud protection, fast riveted pins with rivet heads that are formed on both ends to prevent removal of the hinge pin, and hinges with non-removable pin set screws.



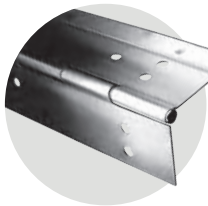
Roton® Continuous Hinges

Hager's Roton® continuous geared hinges provide superior performance you can rely on in high-traffic areas. Our Roton® hinges use unique gears designed to minimize lateral wear on the hinges while evenly distributing door weight along the full length of the frame. Roton® hinges are ideal for new construction and retrofit applications and are offered in light, standard, heavy-duty, and extra heavy duty as well as full surface, half surface, and concealed, all with electric prep options.



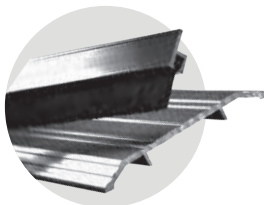
Sliding Door Hardware

If a door is needed but there isn't enough required clearance, a pocket or sliding door can be the solution. Hager has a full line of high quality, durable sliding door hardware that is the perfect choice for any barn door, by-pass, bi-fold, or pocket door application. With Hager sliding door hardware, there are hundreds of fully tested products, including jump proof box tracks, self-aligning wheel systems and complete sets and accessories to meet any need. Just as beneficial, every Hager sliding door hardware product is designed and manufactured to meet or exceed ANSI standards.



Stainless Steel Continuous Hinges

Heavy duty stainless steel continuous hinges offer proven reliability that can stand up to the daily rigors of high-traffic, high-impact areas. They are engineered to evenly distribute door weight along the full length of the door, which eliminates localized stresses on the frame and other hardware. They are offered in the same configurations as Roton®, and are a good choice for exterior applications, or where the properties of the stainless steel material are important.



Thresholds & Weatherstripping

Hager offers a complete line of thresholds and weatherstripping products for nearly any type of door application, all which meets or exceeds ANSI grade quality, durability, and performance levels. For enhanced levels of safety and security, we also offer intumescent products and a wide array of options for positive pressure solutions, edge sealing, and smoke control systems. Additional products ranging from door bottoms, astragals, and hospitality products ensure a more efficient building.



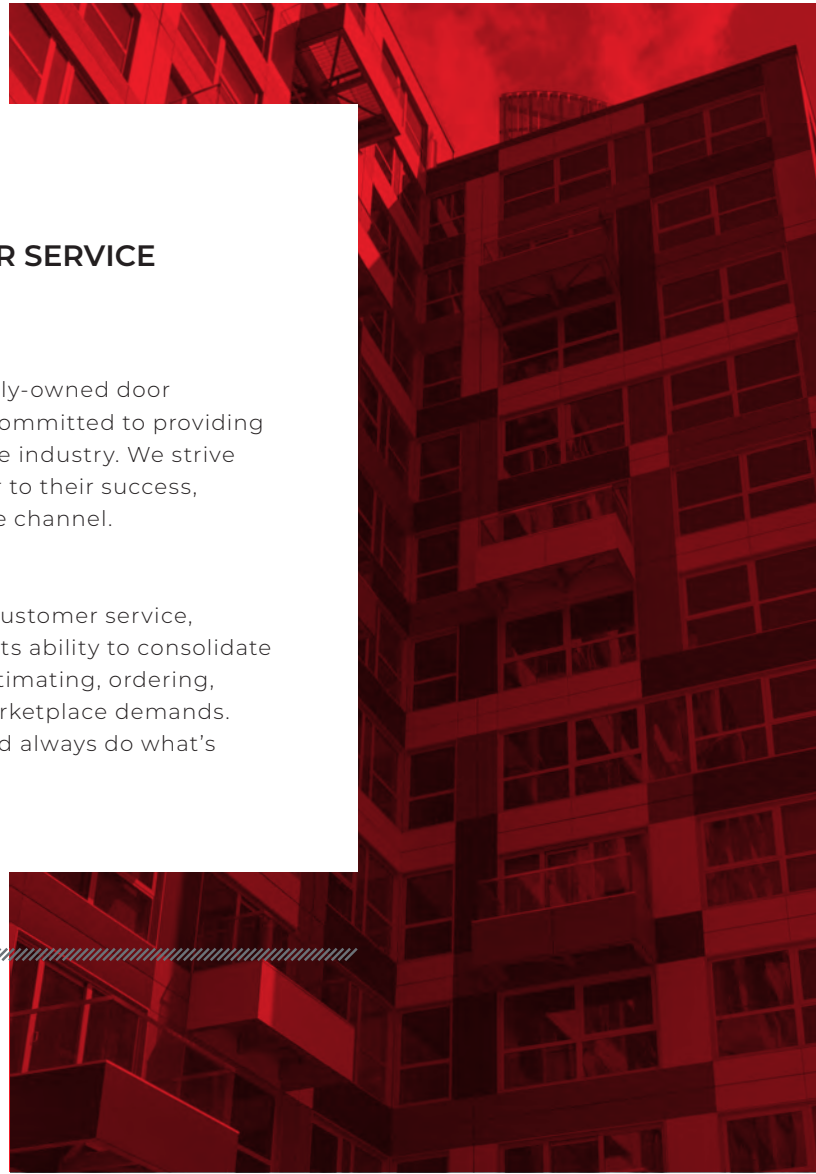
Trim & Auxiliary

Hager offers hundreds of different trim and auxiliary door hardware products in a variety of designs, sizes, and finishes that not only look great, but also provide long lasting wear in any application. Whatever you need — from pulls to push plates, protection plates to door edgings, wall and floor stops to flush bolts, coordinators, signage, and much more — Hager trim and auxiliary products give you great looks and proven durability.

BRINGING INTEGRITY, VALUE AND SUPERIOR SERVICE TO EVERY CUSTOMER.

Hager Companies is an independent, 6th generation family-owned door hardware and electronic access control company that is committed to providing a level of integrity and customer service uncommon in the industry. We strive to be a trusted partner to our distributors and contributor to their success, ultimately elevating the value our distributors bring to the channel.

Hager's legacy of offering quality products and superior customer service, collaborative partnerships with all channel partners, and its ability to consolidate and simplify the process — from specification writing, estimating, ordering, delivery and invoicing — allows us to evolve and meet marketplace demands. Plain and simple, we do what we say we're going to do and always do what's right by our customers.



Door Safety & Security

The world has become more complex, and we're increasing our focus on door safety and security to ensure that we have the products to safeguard individuals in a variety of situations.



Comprehensive Solutions

Once a hinge company — now so much more. From our roots as a blacksmith that focused on wagon wheels and hinges, we've expanded our reach into locks, door controls, exit devices, and electronic access control. We're focused on developing relationships built on transparency and superior customer service, enabling us to become a trusted partner that contributes to the success of our customers.



Address

139 Victor Street
Saint Louis, MO 63104

 /hager-companies

 /hagercompanies

Contact

800-325-9995
marketing@hagerco.com
www.hagerco.com

 /hagercompanies

 /hagercompanies