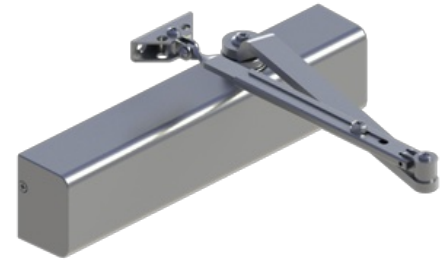


5200 Series

Grade 1 Heavy Duty Door Closer

- Ideal for schools, hospitals, and other high-use environments
- To maximize hinge life and assist in achieving ADA compliance, Hager recommends the use of anti-friction or ball bearing hinges with our door closer products
- Accessories may not be available in all finishes. Please contact Hager for availability and lead time.



PRODUCT SPECIFICATIONS

SIZE:

- 1-6 adjustable

CERTIFICATIONS:

- BHMA Certified ANSI A156.4, adjustable sizes 1-6
- ADA Compliant ANSI A117.1 Accessibility Code
- UL/cUL Listed for up to 3 hours
- UL10C Positive Pressure Rated
- UL10B Neutral Pressure Rated
- Lifetime Warranty

MATERIAL:

- Aluminum Alloy
- The recommended temperatures for prolonged closer use is between -40° F (-42° C) and 150° F (66° C)

COVER:

- Full plastic cover - Standard
- Slim line plastic cover - Optional
- Full size plated metal cover - Optional

SPRINGS:

- Double heat treated steel, tempered springs
- Precision machined, heat treated steel piston

VALVES:

- Adjustable latching and sweep speed valves
- Adjustable backcheck valve - Standard
- Delayed action valve - Optional
- Staked valves - Standard

HANDING:

- Non-Handed

ARMS & BRACKETS:

- Tri-Pack - Regular, parallel arm, and top jamb mount - Standard
- 15% power adjustment in standard arm for regular and top jamb mount

OPTIONAL ARMS:

- Hold Open Arm
- Extra Heavy Duty Hold Open Stop Arm
- Extra Heavy Duty Stop Arm
- Extra Heavy Duty Arm
- Extra Heavy Duty Hold Open Arm
- Extra Heavy Duty Cushion Stop Arm
- Extra Heavy Duty Hold Open Cushion Stop Arm

FASTENERS:

- Self-reaming, self-tapping wood and machine screws
- Sex nuts and bolts

DOOR THICKNESS:

- 1-3/4" (44 mm)
- 1-3/8" - 2-1/4" (36 mm - 57 mm) - Optional

FINISHES:

- ALM, BLK, BRZ, DBZ, GOL
- Rust inhibiting primer - Standard

NOTES:

- Used on doors with a maximum weight of 250 lbs.

EPD:

- [Door Closer Environmental Product Declaration](#)