

4600 RIM NARROW STILE EXIT DEVICE TEMPLATE
4952 SEMI-FLUSH STRIKE APPLICATION
FOR PANIC RATED EXIT HARDWARE

THIS SIDE UP FOR RHR DOOR

THIS SIDE UP FOR LHR DOOR

FOLD OR CUT
ALONG THIS LINE

CAUTION
DO NOT USE
DOOR EDGE

PLACE THIS SIDE ON FRAME OR MULLION STOP
PLACE THIS SIDE ON DOOR

FRAME STOP
DOOR

DEVICE MOUNTING SCREWS (2 PLACES):
 METAL: DRILL/TAP FOR 1/4"-20 MACHINE SCREWS
 WOOD: PRE-DRILL ϕ 1/8" HOLES
 SEXBOLTS:

DRILL ϕ 5/16" CLEARANCE HOLES ON PUSH SIDE,
 DRILL ϕ 3/8" HOLES ON PULL SIDE

TRIM:

DRILL ϕ 5/16" CLEARANCE HOLES ON PUSH SIDE,
 DRILL ϕ 1/2" HOLES ON PULL SIDE

END CAP MOUNTING SCREWS (2 PLACES):

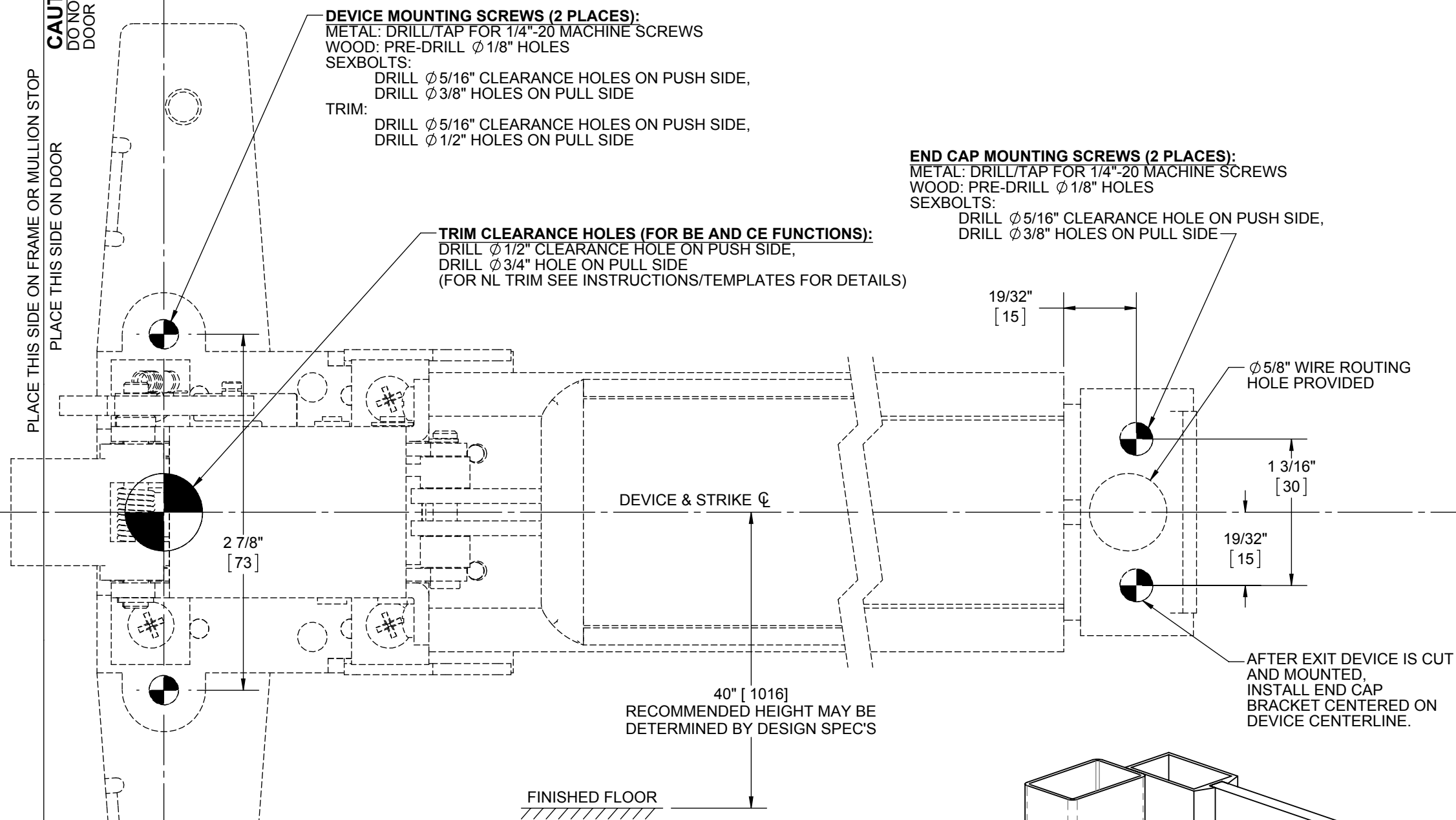
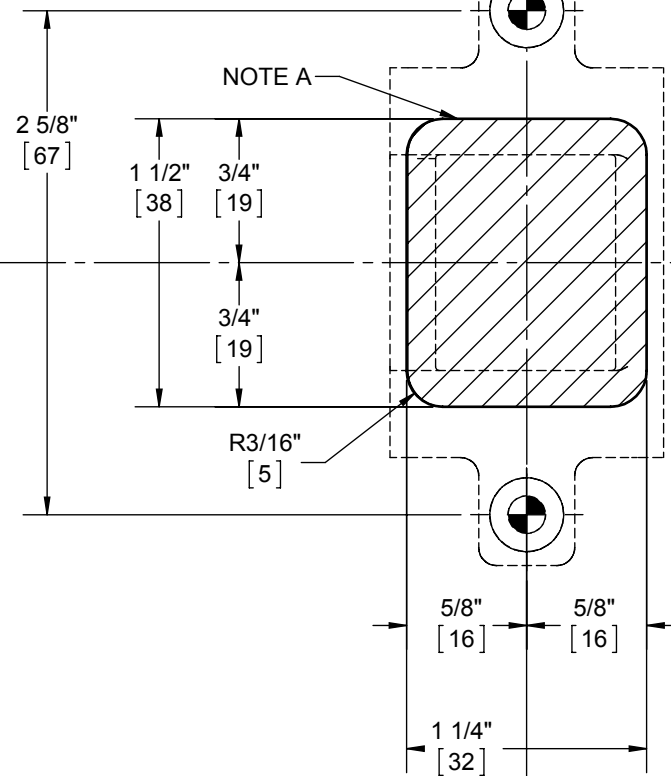
METAL: DRILL/TAP FOR 1/4"-20 MACHINE SCREWS
 WOOD: PRE-DRILL ϕ 1/8" HOLES
 SEXBOLTS:

DRILL ϕ 5/16" CLEARANCE HOLE ON PUSH SIDE,
 DRILL ϕ 3/8" HOLES ON PULL SIDE

TRIM CLEARANCE HOLES (FOR BE AND CE FUNCTIONS):

DRILL ϕ 1/2" CLEARANCE HOLE ON PUSH SIDE,
 DRILL ϕ 3/4" HOLE ON PULL SIDE
 (FOR NL TRIM SEE INSTRUCTIONS/TEMPLATES FOR DETAILS)

STRIKE MOUNTING SCREWS :
 METAL: DRILL/TAP FOR #10-24
 MACHINE SCREWS
 WOOD: PRE-DRILL ϕ 1/8" HOLES
 (2 PLACES)



NOTES:

- A. THE SEMI-FLUSH STRIKE REQUIRES A 1-1/2" TALL X 1-1/4" WIDE CUTOUT IN THE FRAME OR MULLION.
- B. HOLE LOCATIONS IDENTIFIED BY THE ϕ SYMBOL. (PRIMARY DIMENSIONS SHOWN IN INCHES, DIMENSIONS IN [] ARE MILLIMETERS.)

