

THIS SIDE UP FOR LHR DOOR

FOLD HERE  
CAUTION  
DO NOT USE DOOR EDGE!

# 4500 RIM EXIT DEVICE STANDARD TEMPLATE (FOR PANIC AND FIRE RATED DEVICES)

(REV: 04)  
DWG NO: T-ED00043

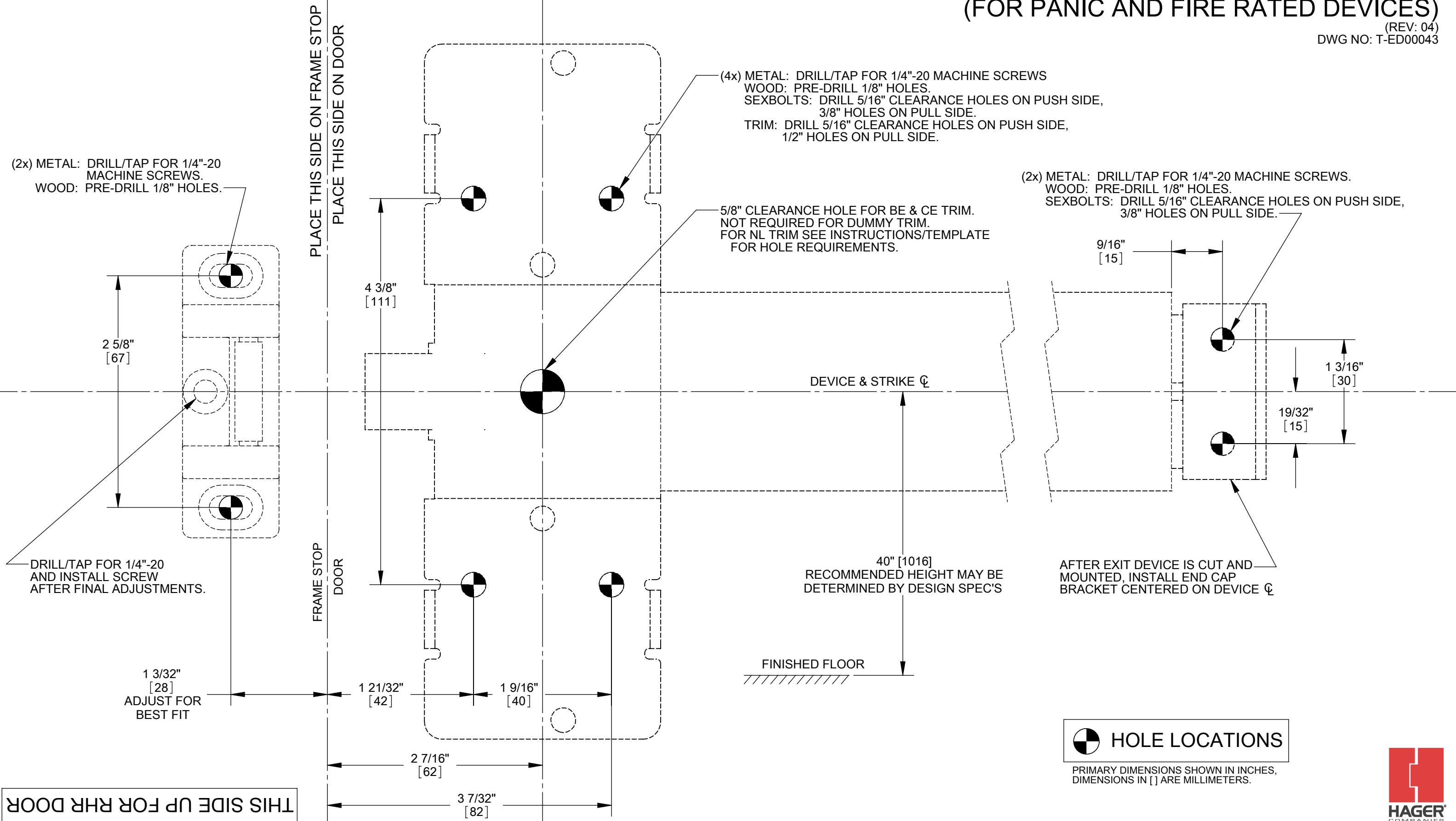
(2x) METAL: DRILL/TAP FOR 1/4"-20  
MACHINE SCREWS.  
WOOD: PRE-DRILL 1/8" HOLES.

(4x) METAL: DRILL/TAP FOR 1/4"-20 MACHINE SCREWS  
WOOD: PRE-DRILL 1/8" HOLES.  
SEXBOLTS: DRILL 5/16" CLEARANCE HOLES ON PUSH SIDE,  
3/8" HOLES ON PULL SIDE.  
TRIM: DRILL 5/16" CLEARANCE HOLES ON PUSH SIDE,  
1/2" HOLES ON PULL SIDE.

(2x) METAL: DRILL/TAP FOR 1/4"-20 MACHINE SCREWS.  
WOOD: PRE-DRILL 1/8" HOLES.  
SEXBOLTS: DRILL 5/16" CLEARANCE HOLES ON PUSH SIDE,  
3/8" HOLES ON PULL SIDE.

5/8" CLEARANCE HOLE FOR BE & CE TRIM.  
NOT REQUIRED FOR DUMMY TRIM.  
FOR NL TRIM SEE INSTRUCTIONS/TEMPLATE  
FOR HOLE REQUIREMENTS.

AFTER EXIT DEVICE IS CUT AND  
MOUNTED, INSTALL END CAP  
BRACKET CENTERED ON DEVICE  $\phi$



THIS SIDE UP FOR RHR DOOR

 HOLE LOCATIONS  
PRIMARY DIMENSIONS SHOWN IN INCHES,  
DIMENSIONS IN [ ] ARE MILLIMETERS.

