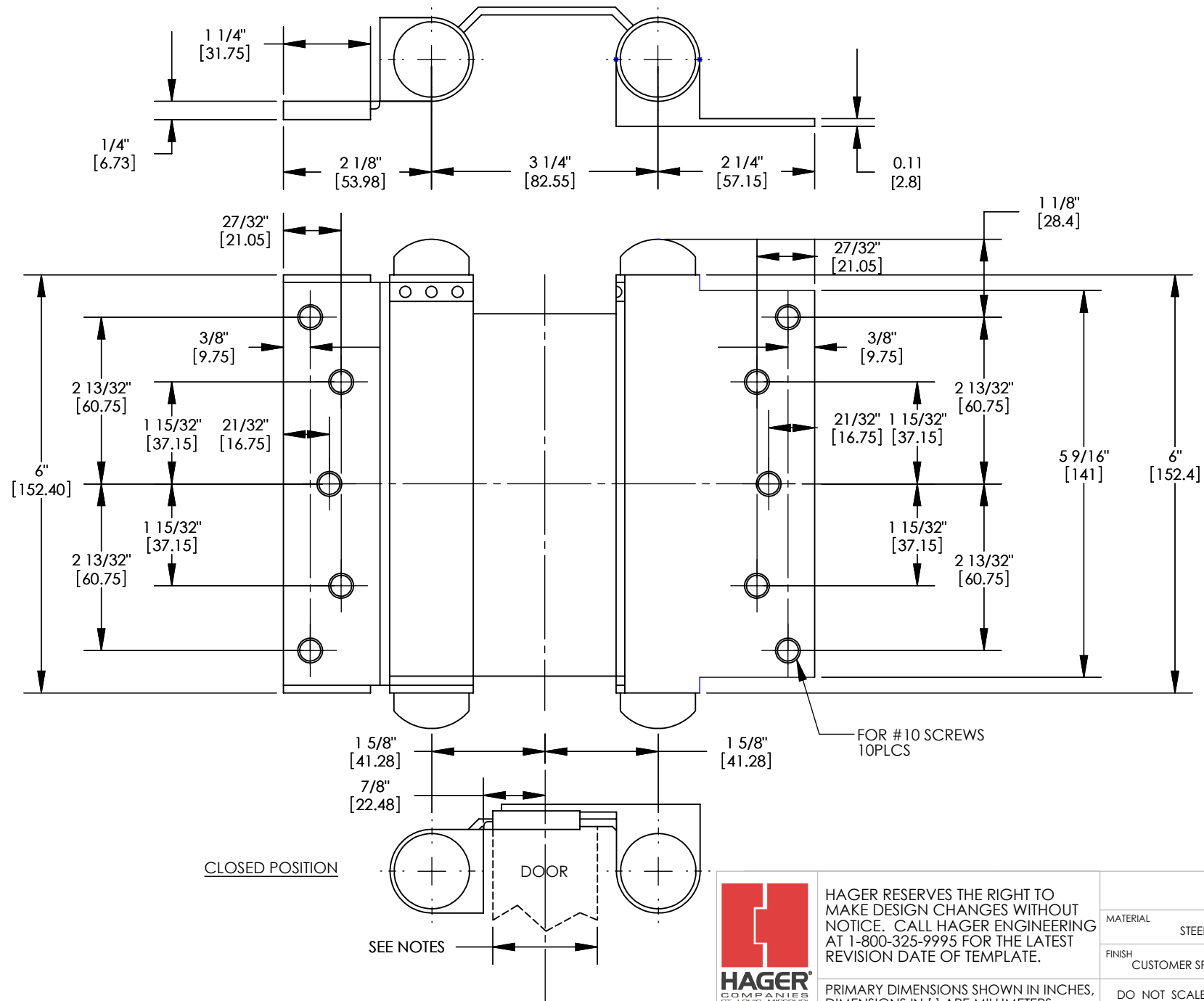


REVISIONS			
REV.	DESCRIPTION	DATE	APPROVED
A	FOR COMPUTER	03/21/06	-
-	HOLE PATTERN UPDATE	4/22/2009	MAM
01	UPDATED DOOR WEIGHT	5/20/2013	MAM



- NOTES:
 MAXIMUM DOOR THICKNESS WITH CHAMFER - 2" [50.8]
 MAXIMUM DOOR THICKNESS - 1-3/4" [44.5]
 MINIMUM DOOR THICKNESS - 1-1/4" [31.8]
 DOOR - 100LBS. OR LESS
 3 HINGES PER DOOR



HAGER RESERVES THE RIGHT TO MAKE DESIGN CHANGES WITHOUT NOTICE. CALL HAGER ENGINEERING AT 1-800-325-9995 FOR THE LATEST REVISION DATE OF TEMPLATE.

PRIMARY DIMENSIONS SHOWN IN INCHES, DIMENSIONS IN [] ARE MILLIMETERS.

MATERIAL	STEEL		
	FINISH CUSTOMER SPECIFIED		
DO NOT SCALE DRAWING			
DRAWN	DMH	03/21/06	
ENG. APPR.	MAM	03/22/06	
Q.A.			
TOLERANCES:			
FRACTIONAL: ±0.015"			
ANGULAR: MACH: ± 1° BEND: ±1°			
TWO PLACE DECIMAL: ±0.01"			
THREE PLACE DECIMAL: ±0.004"			

1303 6" DOUBLE ACTING SPRING HINGE TEMPLATE

SIZE	DWG. NO.	REV.
B	T-CT00045	01
SCALE: 1:2	WEIGHT: N/A	SHEET 1 OF 1