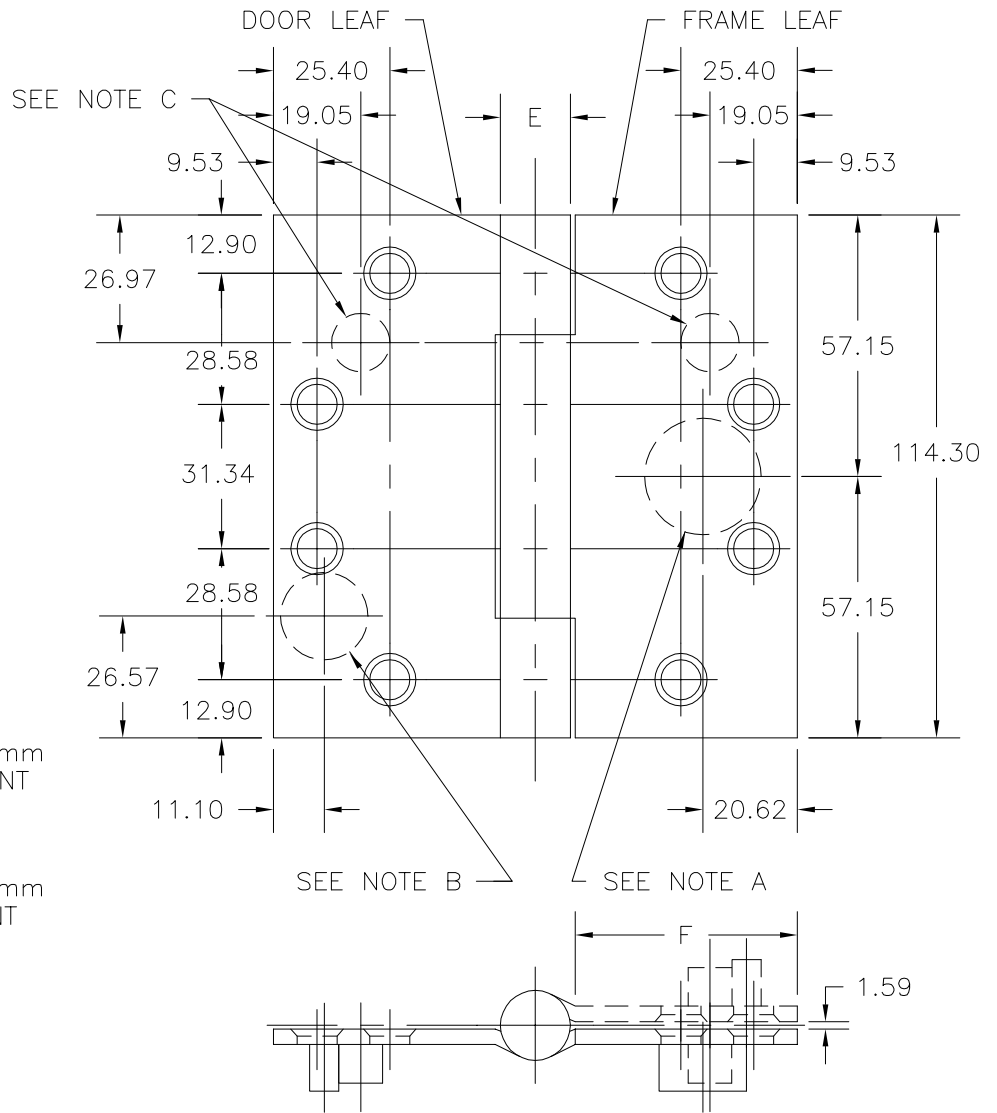


SPECIAL HEAVY WEIGHT
 FULL MORTISE REVERSE
 SAFETY STUD TEMPLATE HINGES
 ELECTRIC THROUGH WIRE
 AND MONITOR TYPE ETM

Template No. T555M
 Rev. '96



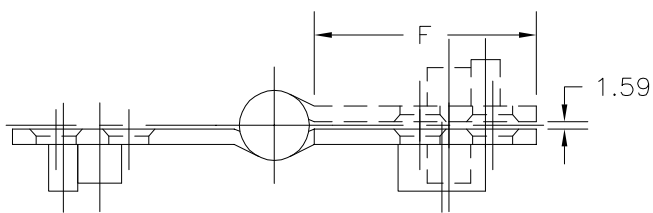
SIZES: 114.30 x 114.30



ETM MAXIMUM
 ELECTRICAL RATING
 SWITCH
 VOLTS 48V DC/AC
 AMPERES 1.0A
 CONTACT THROUGH WIRE
 VOLTS 48V DC/AC
 AMPERES
 3.5A CONTINUOUS CURRENT
 16.0A CURRENT INRUSH
 (300 MILLISECONDS)

DRILLING INSTRUCTIONS

- NOTE A:
 DRILL AND DEBURR ϕ 25.40 mm
 HOLE IN FRAME REINFORCEMENT
 FOR THROUGH WIRES.
- NOTE B:
 DRILL AND DEBURR ϕ 19.05 mm
 HOLE IN DOOR REINFORCEMENT
 FOR THROUGH WIRES.
- NOTE C:
 DRILL ϕ 12.70 mm HOLES
 IN DOOR AND FRAME
 REINFORCEMENT FOR STUDS.



-DO NOT SCALE-

CATALOG NUMBER		METAL GAUGE	(E) KNUCKLE DIAMETER	(F) DISTANCE FROM EDGE OF LEAF TO SWAGE LINE
STEEL HINGES	STAINLESS STEEL HINGES			114.30 x 114.30 46.04
HB950RSS-ETM	HB953RSS-ETM	4.75	22.23	

ALL DIMENSIONS ARE IN MILLIMETERS.
 Machine Screw Size- 1/4-20 x 1/2" F.H.



NOTE: This hinge is intended to be used in the center position.
 Hospital type template hinges conform to the above screw size and location. They are designated by "HT" to catalog number.
 Hager template hinges are made in size and with screw holes located to conform to ANSI-A156.7.

HAGER RESERVES THE RIGHT TO MAKE DESIGN CHANGES WITHOUT NOTICE. CALL HAGER ENGINEERING AT 1-800-325-9995 FOR LATEST REVISION DATE OF TEMPLATE.

HAGER COMPANIES
 139 VICTOR STREET
 P.O. BOX 12300
 ST. LOUIS, MISSOURI 63157-0300

Template No. T555M