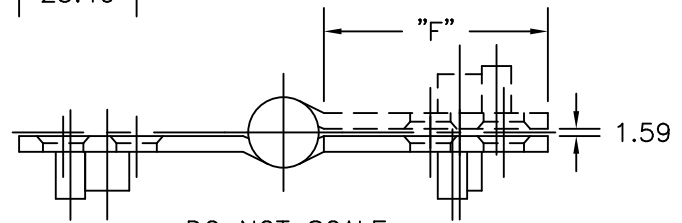
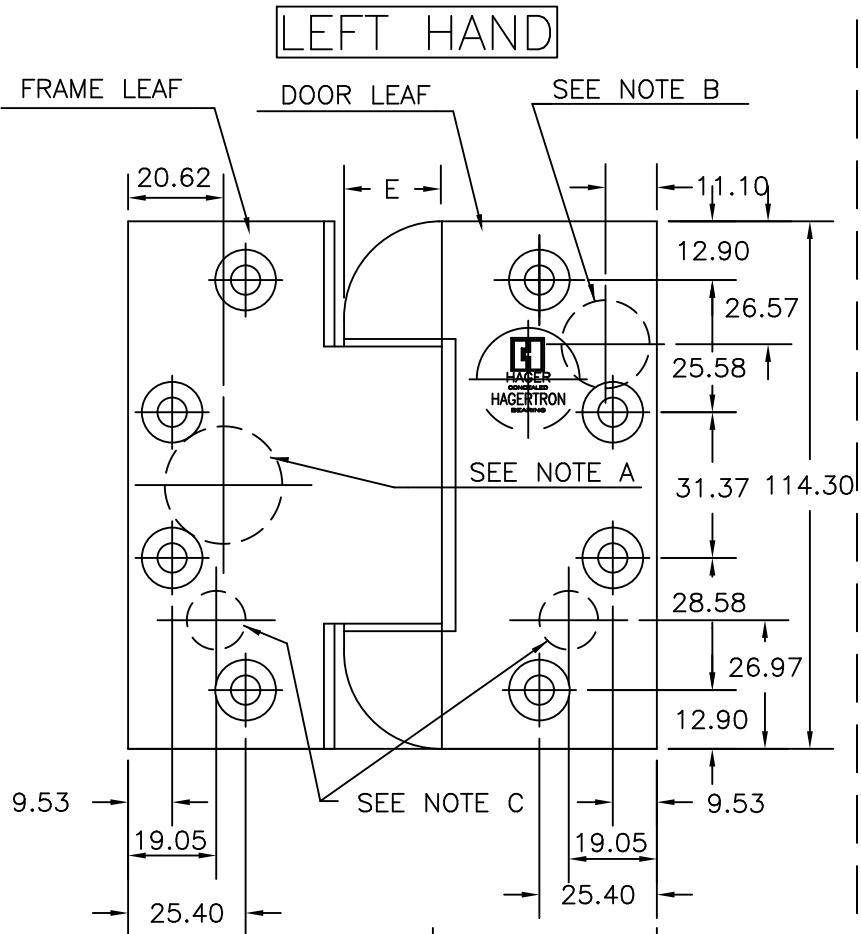
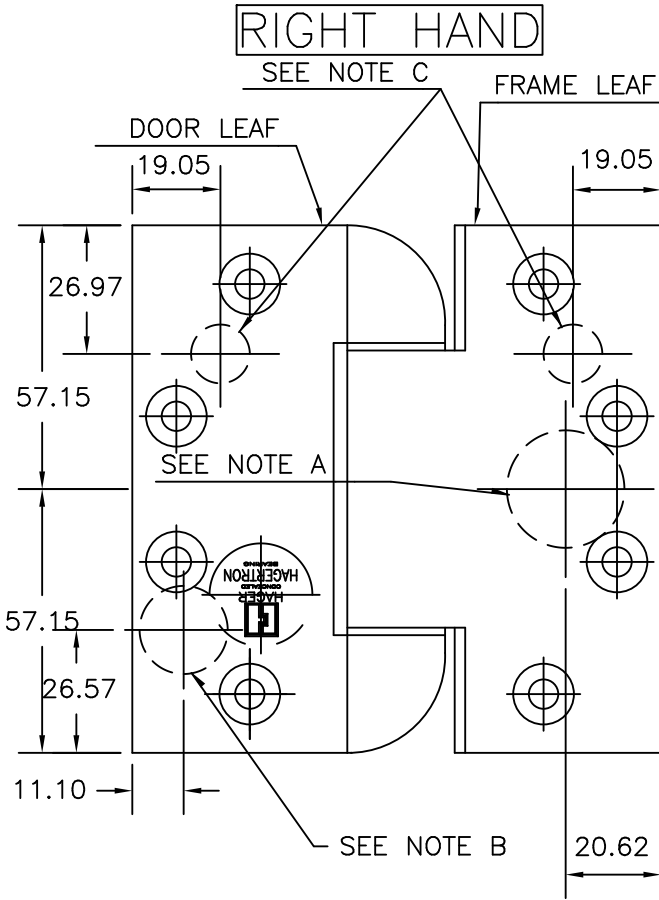




SPECIAL HEAVY WEIGHT
FULL MORTISE REVERSE
SAFETY STUD TEMPLATE HINGES
ELECTRIC THROUGH WIRE TYPE ETW
SIZES: 114.30 x 114.30

Template No. T554

No.	REVISION	BY	DATE
3	ECO CT08039	DW	11.10.08
4	ADDED LH	SLJ	05.28.09
5	MIR ELEC COS	SLJ	07.26.10
6	CT12001	DW	08.13.12
7	CT12001	SJ	08.14.12
8	DELETED 750/850	SJ	04.22.13



DRILLING INSTRUCTIONS

NOTE A:
DRILL AND DEBURR ϕ 25.40
HOLE IN FRAME REINFORCEMENT
FOR THROUGH WIRES.

NOTE B:
DRILL AND DEBURR ϕ 19.05
HOLE IN DOOR REINFORCEMENT
FOR THROUGH WIRES.

NOTE C:
DRILL ϕ 15.88 HOLES
IN DOOR AND FRAME
REINFORCEMENT FOR STUDS.

CATALOG NUMBER	METAL GAUGE	(E) KNUCKLE DIAMETER	(F) DISTANCE FROM EDGE OF LEAF TO SWAGE LINE
STAINLESS STEEL HINGES	4.75	22.23	114.30 x 114.30
HB953RSS-ETW			46.04

ALL DIMENSIONS ARE IN INCHES.

Machine Screw Size- 1/4-20 x 1/2" F.H.

NOTE: This hinge is intended to be used in the center position. Hospital type template hinges conform to the above screw size and location. They are designated by "HT" to catalog number.

Hager template hinges are made in size and with screw holes located to conform to ANSI-A156.7.



HAGER RESERVES THE RIGHT TO MAKE DESIGN CHANGES WITHOUT NOTICE. CALL HAGER ENGINEERING AT 1-800-325-9995 FOR LATEST REVISION DATE OF TEMPLATE.

HAGER COMPANIES
139 VICTOR STREET
P.O. BOX 12300
ST. LOUIS, MISSOURI 63157-0300