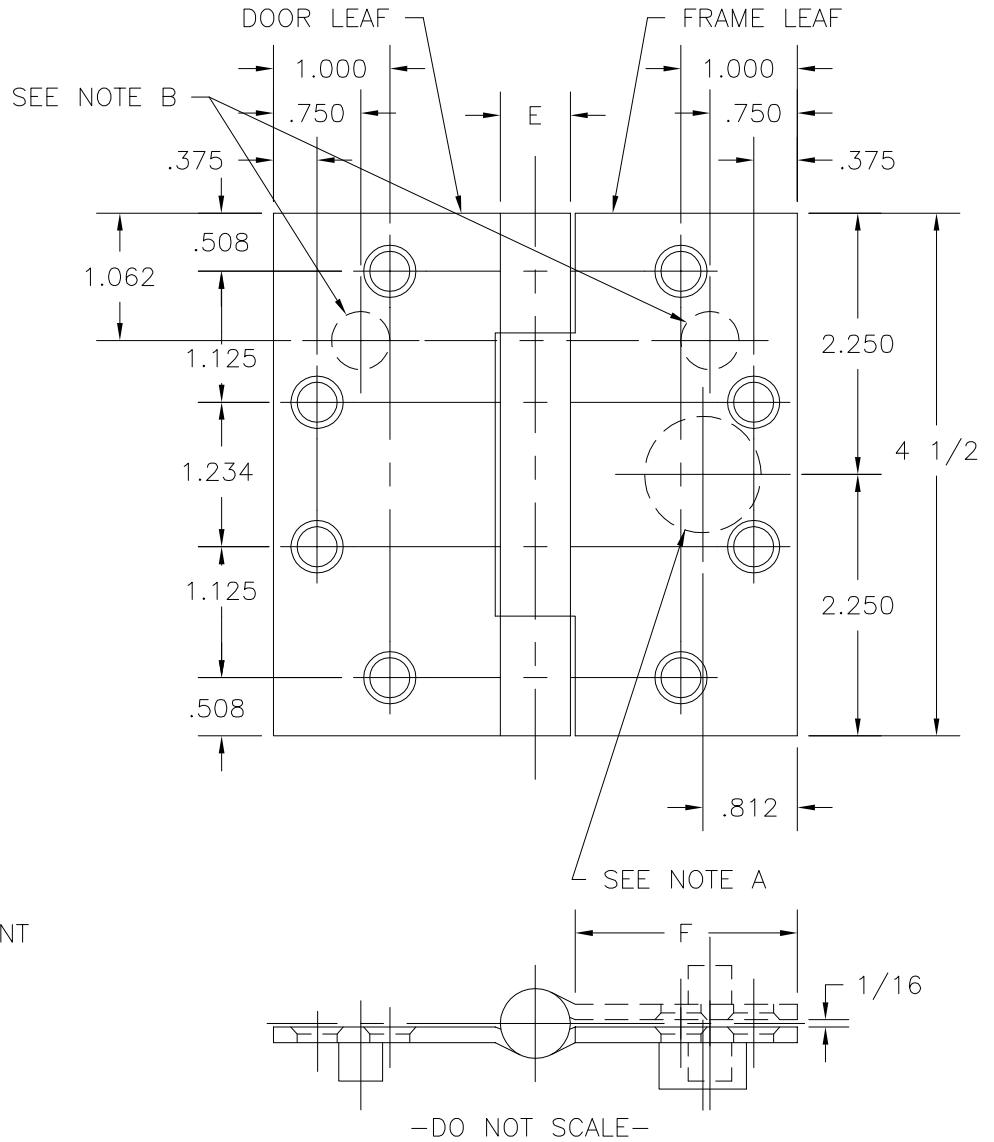


SPECIAL HEAVY WEIGHT  
 FULL MORTISE REVERSE  
 SAFETY STUD TEMPLATE HINGES  
 ELECTRIC MONITOR TYPE EMN

Template No. T553  
 Rev. '96



SIZES: 4 1/2 x 4 1/2



EMN MAXIMUM  
 ELECTRICAL RATING  
 SWITCH  
 VOLTS 48V DC/AC  
 AMPERES 1.0A

DRILLING INSTRUCTIONS

NOTE A:  
 DRILL AND DEBURR  $\phi$  1"  
 HOLE IN FRAME REINFORCEMENT  
 FOR WIRES.

NOTE B:  
 DRILL  $\phi$  1/2" HOLES  
 IN DOOR AND FRAME  
 REINFORCEMENT FOR STUDS.

CATALOG NUMBER		METAL GAUGE	(E) KNUCKLE DIAMETER	(F) DISTANCE FROM EDGE OF LEAF TO SWAGE LINE
STEEL HINGES	STAINLESS STEEL HINGES			4 1/2 x 4 1/2 1 13/16
HB950RSS-EMN	HB953RSS-EMN	.187	7/8	

ALL DIMENSIONS ARE IN INCHES.

Machine Screw Size- 1/4-20 x 1/2" F.H.



NOTE: This hinge is intended to be used in the center position.  
 Hospital type template hinges conform to the above screw size and location.  
 They are designated by "HT" to catalog number.  
 Hager template hinges are made in size and with screw holes located  
 to conform to ANSI-A156.7.

HAGER RESERVES THE RIGHT TO MAKE  
 DESIGN CHANGES WITHOUT NOTICE. CALL  
 HAGER ENGINEERING AT 1-800-325-9995  
 FOR LATEST REVISION DATE OF TEMPLATE.

HAGER COMPANIES  
 139 VICTOR STREET  
 P.O. BOX 12300  
 ST. LOUIS, MISSOURI 63157-0300

Template No. T553