

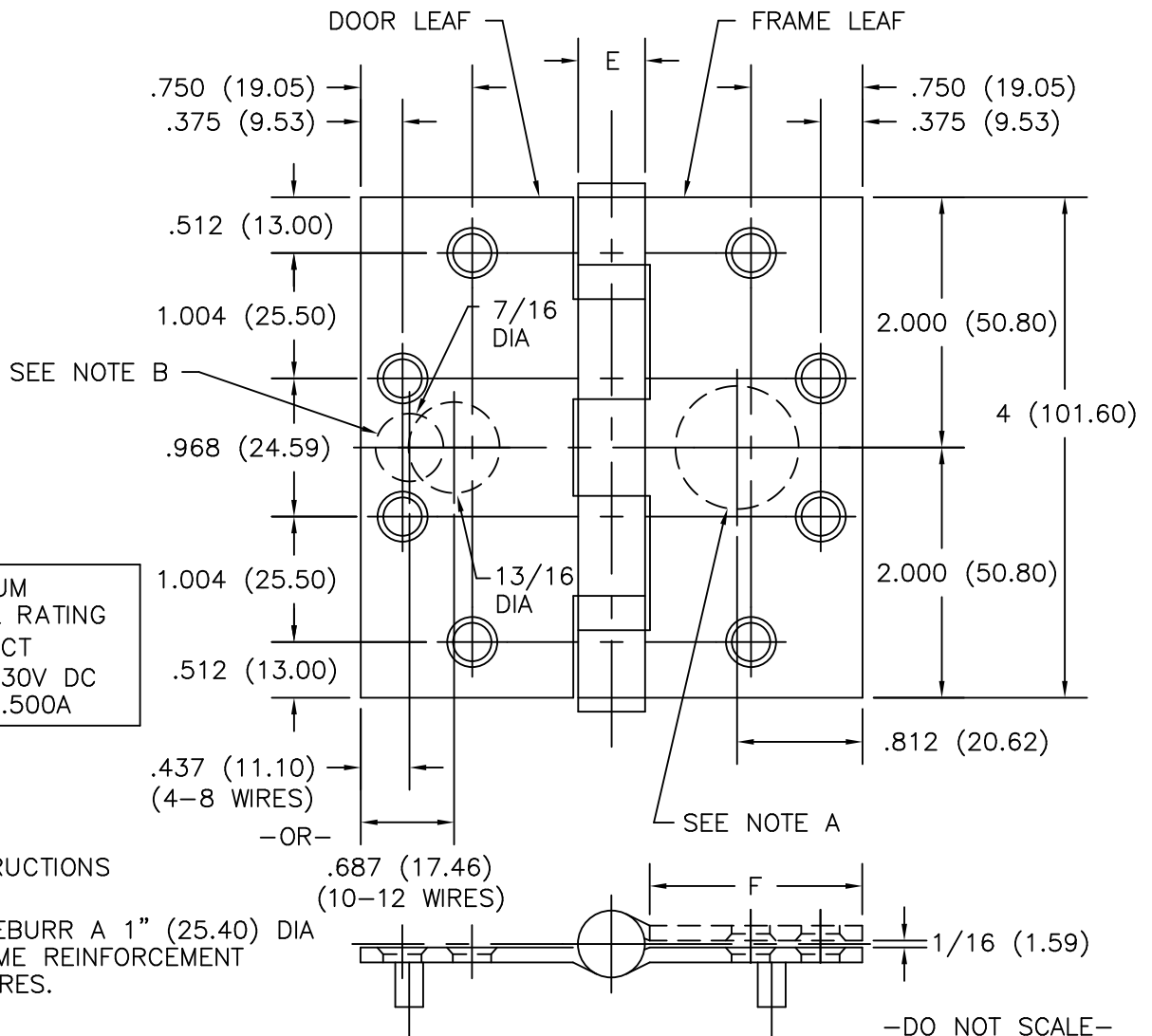


FULL MORTISE  
ELECTRIC THRU WIRE  
TYPE ETW TEMPLATE HINGES

Template No. T541

No.	REVISION	BY	DATE
1	ECO CT05035	RAM	8-15-05
2	ECO CT07016	DW	4.12.07

SIZES: 4 x 4  
(101.60 x 101.60)



MAXIMUM  
ELECTRICAL RATING  
CONTACT  
VOLTS: 30V DC  
AMPERES: .500A

DRILLING INSTRUCTIONS

NOTE A:  
DRILL AND DEBURR A 1" (25.40) DIA  
HOLE IN FRAME REINFORCEMENT  
FOR THRU WIRES.

NOTE B:  
DRILL AND DEBURR A 7/16" (11.10) DIA HOLE FOR 4-8 THRU WIRES -OR-  
A 13/16" (20.64) DIA HOLE FOR 10-12 THRU WIRES IN DOOR REINFORCEMENT.

CATALOG NUMBER		METAL GAUGE	(E) KNUCKLE DIAMETER	(F) DISTANCE FROM EDGE OF LEAF TO SWAGE LINE
STEEL HINGES	NON- FERROUS HINGES			4 x 4 (101.60 x 101.60)
BB1279-ETW	BB1191-ETW	.129 (3.28)	35/64 (13.89)	1 5/8 (41.28)

ALL NON-BRACKETED DIMENSIONS ARE IN INCHES, ALL BRACKETED DIMENSIONS ARE IN MILLIMETERS.

Machine Screw Size- 12-24 x 1/2" F.H.  
Wood Screw Size- No. 12 x 1 1/4" F.H.



NOTE: This hinge is intended to be used in the center position.

Hager template hinges are made in size, gauge and with screw holes located to conform to ANSI-A156.7.

HAGER RESERVES THE RIGHT TO MAKE  
DESIGN CHANGES WITHOUT NOTICE. CALL  
HAGER ENGINEERING AT 1-800-325-9995  
FOR LATEST REVISION DATE OF TEMPLATE.

HAGER HINGE CO.  
139 Victor St.  
St. Louis, MO 63104