



TRICON - FULL MORTISE
 TEMPLATE HINGES ELECTRIC
 THROUGH WIRE TYPE ETW

Template No. T522M

SIZES: 114.30 x 101.60, 114.30 x 114.30

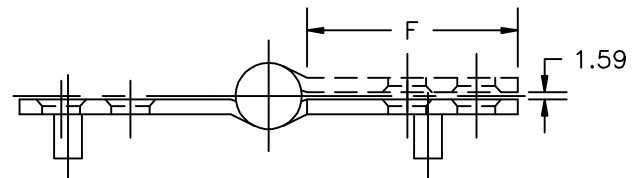
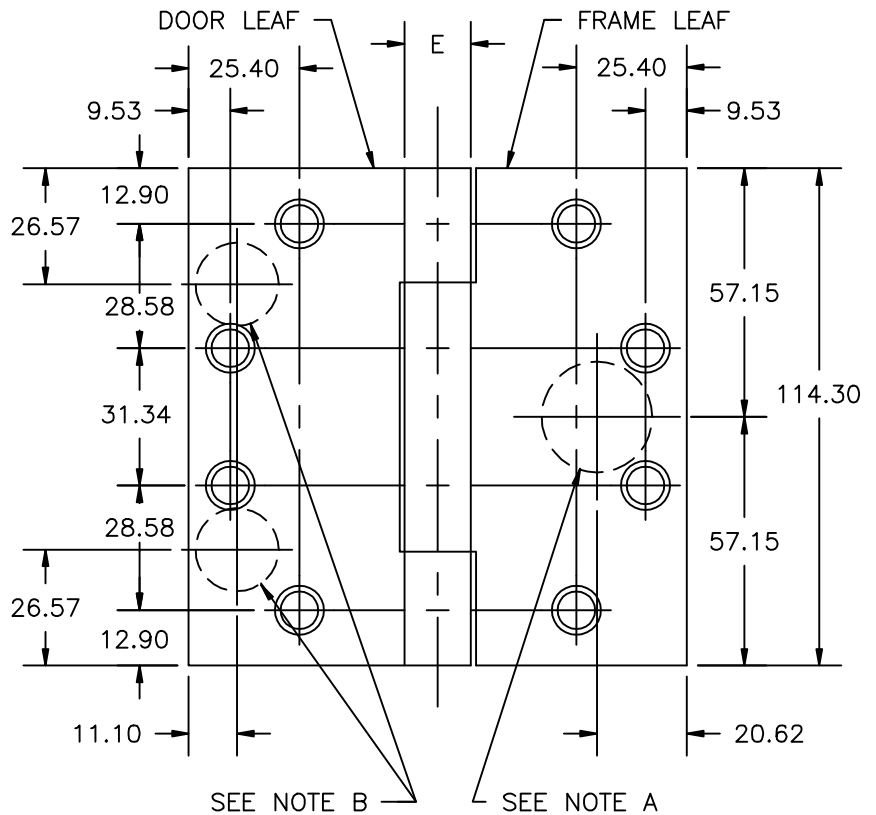
No.	REVISION	BY	DATE
1	ECO CT05035	RAM	8-12-05

ETW MAXIMUM
 ELECTRICAL RATING
 CONTACT THROUGH WIRE
 VOLTS 48V DC
 AMPERES
 3.5A CONTINUOUS CURRENT
 16.0A CURRENT INRUSH
 (300 MILLISECONDS)

DRILLING INSTRUCTIONS

NOTE A:
 DRILL AND DEBURR ϕ 25.40 mm
 HOLE IN FRAME REINFORCEMENT
 FOR THROUGH WIRES.

- NOTE B:
1. NON-HANDED INSTALLATION-
 DRILL AND DEBURR TWO
 (2) ϕ 19.05 mm HOLES IN
 DOOR REINFORCEMENT PLATE
 FOR THROUGH WIRES.
 2. RIGHT HAND INSTALLATION-
 DRILL AND DEBURR ϕ 19.05 mm
 HOLE FOR THROUGH WIRES IN
 DOOR REINFORCEMENT
 PLATE ON BOTTOM LEFT.
 3. LEFT HAND INSTALLATION-
 DRILL AND DEBURR ϕ 19.05 mm
 HOLE FOR THROUGH WIRES IN
 DOOR REINFORCEMENT
 PLATE ON UPPER RIGHT.



-DO NOT SCALE-

CATALOG NUMBER		METAL GAUGE	(E) KNUCKLE DIAMETER	(F) DISTANCE FROM EDGE OF LEAF TO SWAGE LINE	
STEEL HINGES	NON-FERROUS HINGES			114.30 x 101.60	114.30 x 114.30
AB700-ETW	AB800-ETW	3.40	15.48	41.28	47.63
AB750-ETW	AB850-ETW	4.57	17.86	39.69	46.04

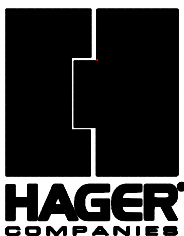
ALL DIMENSIONS ARE IN MILLIMETERS.

Machine Screw Size- 12-24 x 1/2" F.H.
 Wood Screw Size- No. 12 x 1 1/4" F.H.

NOTE: This hinge is intended to be used in the center position.

Hospital type and round corner template hinges conform to the above screw size and location. They are designated by "HT" and "RC" to catalog number.

Hager template hinges are made in size, gauge and with screw holes located to conform to ANSI-A156.7.



HAGER RESERVES THE RIGHT TO MAKE
 DESIGN CHANGES WITHOUT NOTICE. CALL
 HAGER ENGINEERING AT 1-800-325-9995
 FOR LATEST REVISION DATE OF TEMPLATE.

HAGER COMPANIES
 139 VICTOR STREET
 P.O. BOX 12300
 ST. LOUIS, MISSOURI 63157-0300