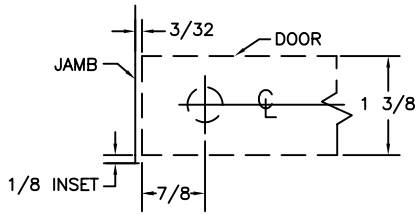
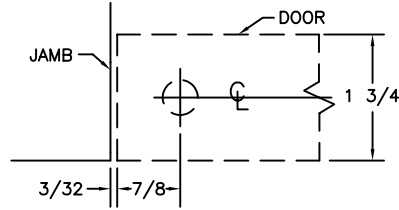


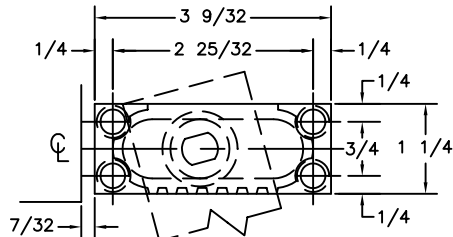
# SINGLE ACTING RECONTEUR PIVOT



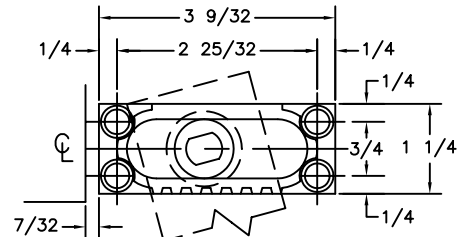
1 3/8 THICK DOOR— PIVOT LOCATION



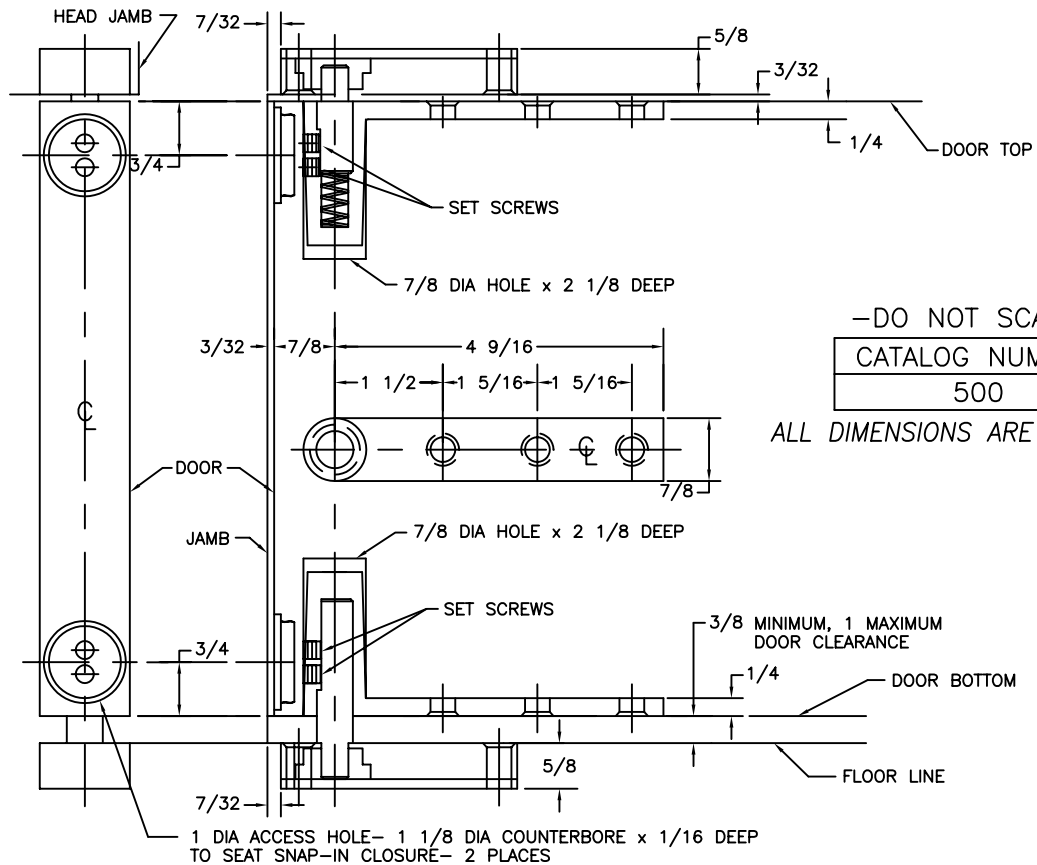
1 3/4 THICK DOOR— PIVOT LOCATION



HEAD GEAR BOX— PLAN VIEW



FLOOR GEAR BOX— PLAN VIEW



—DO NOT SCALE—  
 CATALOG NUMBER  
 500

ALL DIMENSIONS ARE IN INCHES.

Machine Screw Size: Door Mount Pivots— 12-24 x 1/2" F.H.  
 Head Gear Box— 12-24 x 7/8" F.H.

Wood Screw Size for door mount pivots and gear boxes— No. 12 x 1 1/4" F.H.

Plastic cinch anchors furnished for masonry floors.

**HAGER COMPANIES**  
 139 Victor St.  
 St. Louis, MO 63104  
 1-800-325-9995

HAGER RESERVES THE RIGHT TO MAKE  
 DESIGN CHANGES WITHOUT NOTICE.

DESCRIPTION:  
 500 PIVOT TEMPLATE

NO.	REVISION	BY	DATE
2	ECO CT05041	RAM	11-02-05

PART NO. T356\_500 PIVOT