

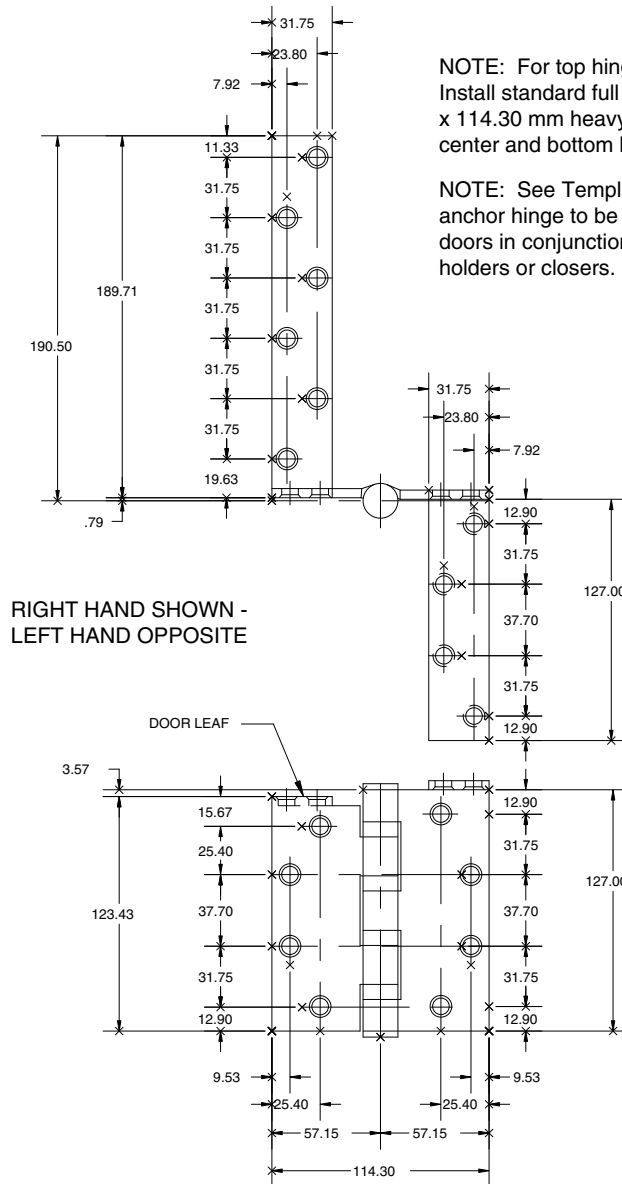
FULL MORTISE ANCHOR TEMPLATE HINGES

Template No. T
Rev. '96

326M

SIZES: 127.00 x 114.30

FOR SQUARE EDGE DOORS



NOTE: For top hinge location only.
Install standard full mortise 127.00 mm
x 114.30 mm heavy weight hinges at
center and bottom hinge locations.

NOTE: See Template No. T327 for standard
anchor hinge to be used on square edge
doors in conjunction with concealed door
holders or closers.

RIGHT HAND SHOWN -
LEFT HAND OPPOSITE

-DO NOT SCALE-

CATALOG NUMBER		
STEEL HINGES	NON-FERROUS HINGES	METAL GAUGE
BB1162	BB1192	4.83
AB7506	AB8506	4.83

ALL DIMENSIONS ARE IN MILLIMETERS.

Machine Screw Size- 12-24 x 1/2" F.H.
Wood Screw Size-No. 12 x 1 1/4" F.H.

HAGER RESERVES THE RIGHT TO MAKE
DESIGN CHANGES WITHOUT NOTICE. CALL
HAGER ENGINEERING AT 1-800-325-9995
FOR LATEST REVISION DATE OF TEMPLATE.

HAGER COMPANIES
139 VICTOR STREET
P.O. BOX 12300
ST. LOUIS, MISSOURI 63157-0300



Template No. T
326M