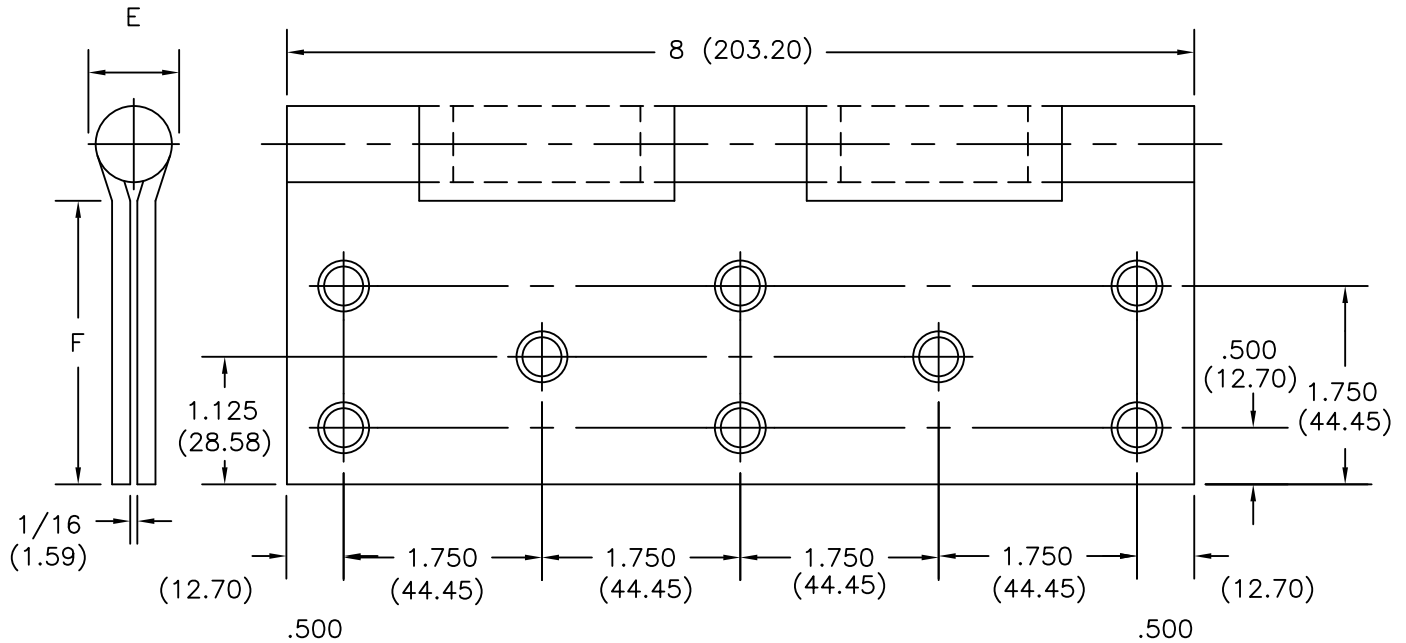


FULL MORTISE
TEMPLATE HINGES

Template No. T319
Rev. '96

SIZES: 8 x 6 --- 8 x 8
(203.20 x 152.40) (203.20 x 203.20)

FOR DOORS 2 1/2 (63.50) OR MORE IN THICKNESS



-DO NOT SCALE-

CATALOG NUMBER		METAL GAUGE	(E) KNUCKLE DIAMETER	(F) DISTANCE FROM EDGE OF LEAF TO SWAGE LINE	
STEEL HINGES	NON- FERROUS HINGES			8 x 6 (203.20 x 152.40)	8 x 8 (203.20 x 203.20)
BB1168	BB1199	.203 (5.16)	13/16 (20.64)	2 7/16 (61.91)	3 7/16 (87.31)

ALL NON-BRACKETED DIMENSIONS ARE IN INCHES, ALL BRACKETED DIMENSIONS ARE IN MILLIMETERS.

Machine Screw Size- 1/4-20 x 1/2" F.H.

Wood Screw Size- No. 14 x 1 1/2" F.H.

Template No. T319



Hospital type template hinges conform to the above screw size and location. They are designated by "HT" to catalog number.

HAGER RESERVES THE RIGHT TO MAKE
DESIGN CHANGES WITHOUT NOTICE. CALL
HAGER ENGINEERING AT 1-800-325-9995
FOR LATEST REVISION DATE OF TEMPLATE.

HAGER COMPANIES
139 VICTOR STREET
P.O. BOX 12300
ST. LOUIS, MISSOURI 63157-0300