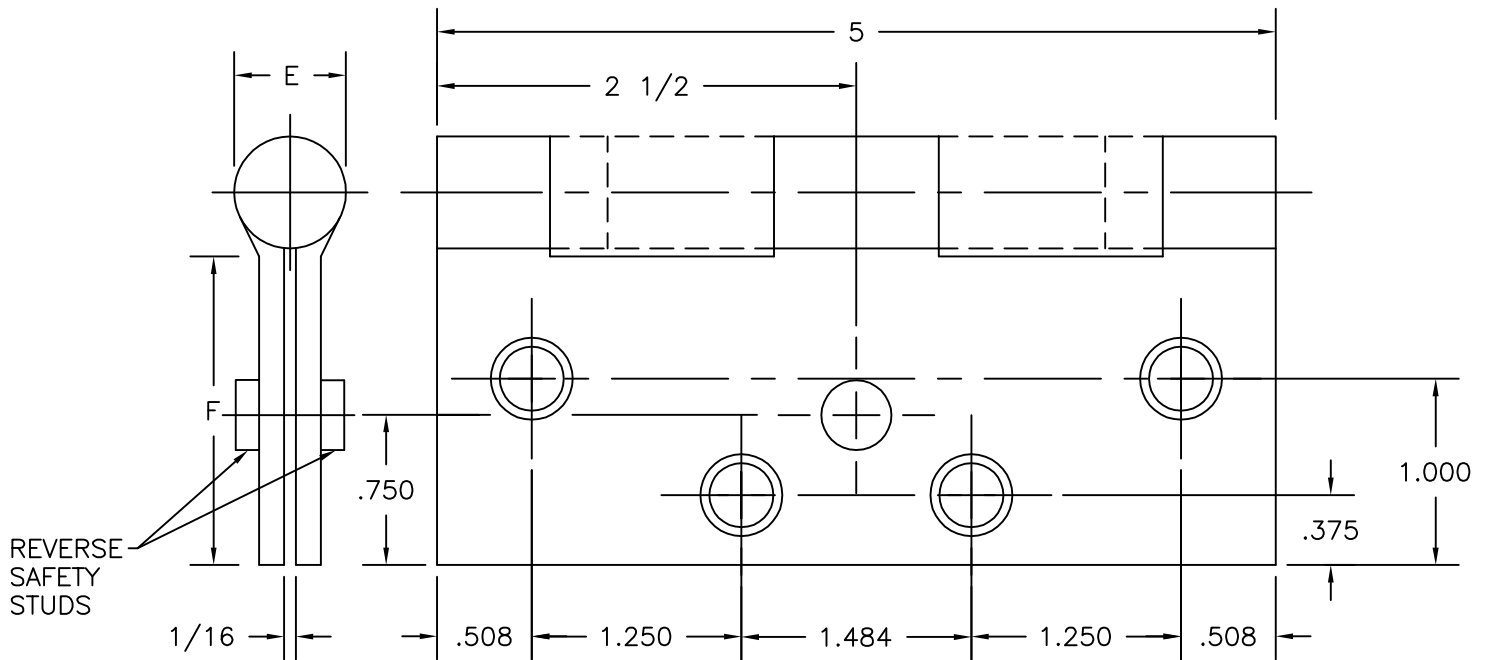


FULL MORTISE
REVERSE SAFETY STUD
TEMPLATE HINGES

Template No. T316

REV. NO.	REVISIONS	BY	DATE
2	ECO CT05083	RAM	12-14-05

SIZES: 5 x 4, 5 x 4 1/2, 5 x 5, 5 x 6, 5 x 7, 5 x 8



-DO NOT SCALE-

DRILLING INSTRUCTIONS

RECOMMEND ϕ 5/8" HOLES IN JAMB
AND DOOR REINFORCEMENTS FOR
CLEARANCE OF REVERSE SAFETY STUDS.

CATALOG NUMBER		METAL GAUGE	(E) KNUCKLE DIAMETER	(F) DISTANCE FROM EDGE OF LEAF TO SWAGE LINE					
STEEL HINGES	NON-FERROUS HINGES			5 x 4	5 x 4 1/2	5 x 5	5 x 6	5 x 7	5 x 8
700	800	.145	5/8	1 5/8	1 7/8	2 1/8	---	---	---
1279	1191	.145	41/64	1 5/8	1 7/8	2 1/8	2 5/8	3 1/8	3 5/8
AB700	AB800	.145	5/8	1 5/8	1 7/8	2 1/8	2 5/8	3 1/8	3 5/8
BB1279	BB1191	.145	41/64	1 5/8	1 7/8	2 1/8	2 5/8	3 1/8	3 5/8
AB750	AB850	.190	47/64	1 9/16	1 13/16	2 1/16	2 9/16	3 1/16	3 9/16
BB1168	BB1199	.190	47/64	1 9/16	1 13/16	2 1/16	2 9/16	3 1/16	3 9/16

ALL DIMENSIONS ARE IN INCHES.

Machine Screw Size- 12-24 x 1/2" F.H.

Wood Screw Size- No. 12 x 1 1/4" F.H.



Hospital type and round corner template hinges conform to the above screw size and location. They are designated by "HT" and "RC" to catalog number.

Hager template hinges are made in size, gauge and with screw holes located to conform to ANSI-A156.7.

HAGER RESERVES THE RIGHT TO MAKE
DESIGN CHANGES WITHOUT NOTICE. CALL
HAGER ENGINEERING AT 1-800-325-9995
FOR LATEST REVISION DATE OF TEMPLATE.

HAGER COMPANIES
139 VICTOR STREET
P.O. BOX 12300
ST. LOUIS, MISSOURI 63157-0300