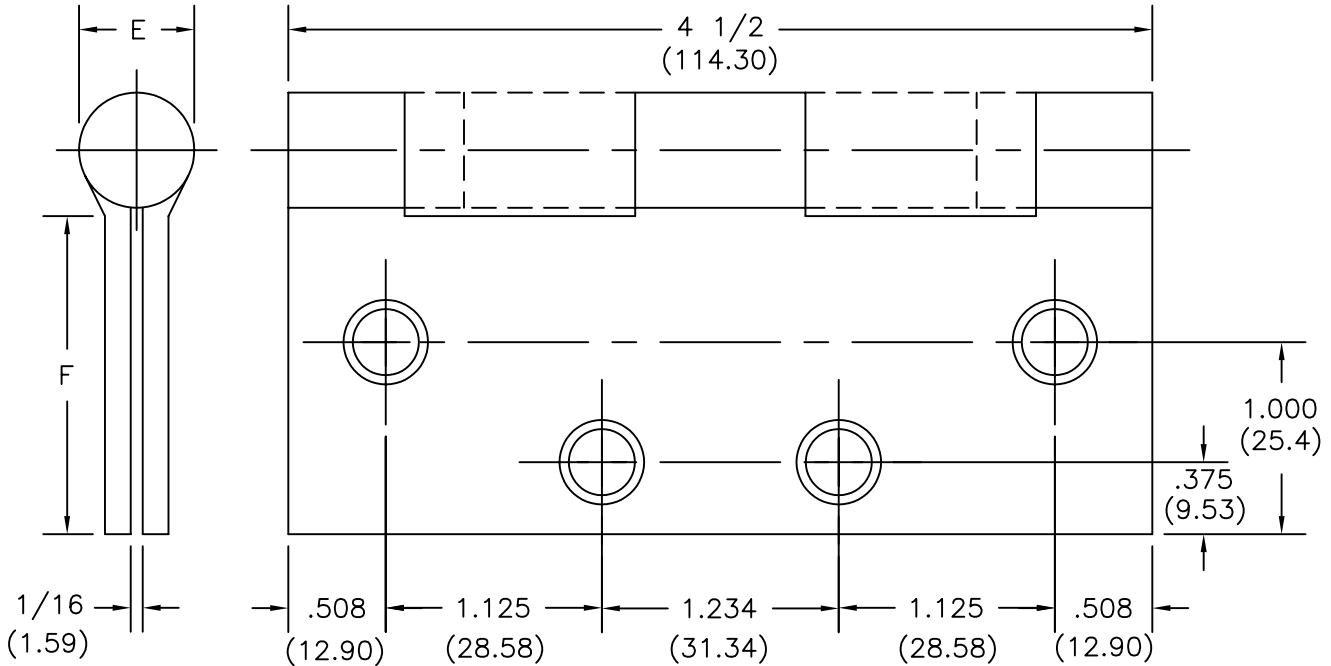


# FULL MORTISE TEMPLATE HINGES

SIZE: 4 1/2 x 4 1/2  
(114.30 x 114.30)



-DO NOT SCALE-

CATALOG NUMBER		METAL GAUGE	(E) KNUCKLE DIAMETER	(F) DISTANCE FROM EDGE OF LEAF TO SWAGE LINE
STEEL HINGES	NON-FERROUS HINGES			4 1/2 x 4 1/2 (114.30) x (114.30)
EC1100	EC1101	.134 (3.40)	39/64 (15.48)	1-7/8 (47.63)
ECBB1100	ECBB1101	.134 (3.40)	39/64 (15.48)	1-7/8 (47.63)

ALL NON-BRACKETED DIMENSIONS ARE IN INCHES, ALL BRACKETED DIMENSIONS ARE IN MILLIMETERS.

Machine Screw Size- 12-24 x 1/2" F.H.

Wood Screw Size- No. 12 x 1 1/4" F.H.

**H**  
HAGER COMPANIES  
139 Victor St.  
St. Louis, MO 63104  
1-800-325-9995

HAGER RESERVES THE RIGHT TO MAKE DESIGN CHANGES WITHOUT NOTICE.

DESCRIPTION:  
ECCO STANDARD WEIGHT  
FULL MORTISE TEMPLATE HINGE

NO.	REVISION	BY	DATE
2	UPDATED DWG	DH	01-23-06

PART NO. T1101