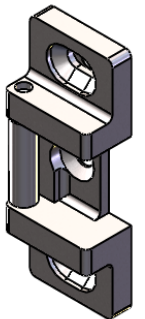


NOTE 1

NOTE:
1. USE 1/4"-20 FLATHEAD MACHINE SCREWS



HAGER RESERVES THE RIGHT TO MAKE DESIGN CHANGES WITHOUT NOTICE. CALL HAGER ENGINEERING AT 1-800-325-9995 FOR THE LATEST REVISION DATE OF TEMPLATE.

PRIMARY DIMENSIONS SHOWN IN INCHES, DIMENSIONS IN [] ARE MILLIMETERS.

MATERIAL	Material <not specified>
FINISH	-
DO NOT SCALE DRAWING	

DRAWN	NJANSEN	5/7/2008
ENG. APPR.	TJS	5/7/2008
Q.A.		
TOLERANCES:		
FRACTIONAL: ±0.015"		
ANGULAR: MACH: ± 1° BEND: ±1°		
TWO PLACE DECIMAL: ±0.01"		
THREE PLACE DECIMAL: ±0.004"		

RIM STRIKE FOR 4700 RIM DEVICE

SIZE	DWG. NO.	REV.
A	S-ED00329	01
SCALE: 1:1	WEIGHT: 0.33	SHEET 1 OF 1