

298D GRAVITY COORDINATOR INSTALLATION INSTRUCTIONS

NOTE:
IF R.H. DOOR IS ACTIVE, THEN
SWITCH ROLLER "A" TO TAPPED
HOLE "B" AND FLIP COORDINATOR
180 DEGREES FOR MOUNTING

NOTE:

1. USE AUTO FLUSHBOLTS ONLY.
2. RECOMMENDED FOR USE WITH FLUSHTOP METAL DOORS. ONLY WHEN USING A METAL DOOR WITH AUTO FLUSHBOLTS.
3. MIN RAIL HEIGHT: 2-1/2"
4. 297C CARRY BAR IS NEEDED WHEN INSTALLING AN ASTRAGAL. THE CARRY BAR WILL KEEP THE ASTRAGAL FROM DAMAGE WHEN THE INACTIVE DOOR IS OPENED FIRST.
5. USE 297D COORDINATOR IF USING SELF LATCHING FLUSHBOLTS

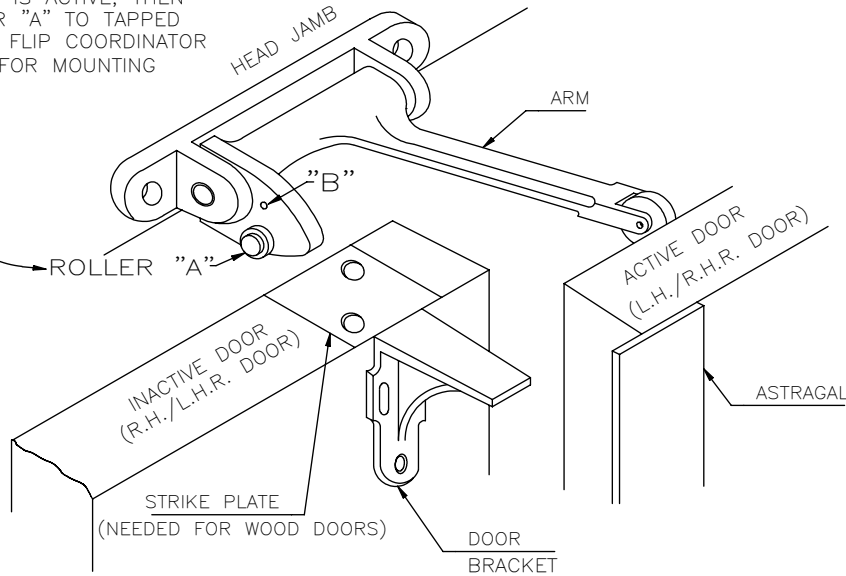
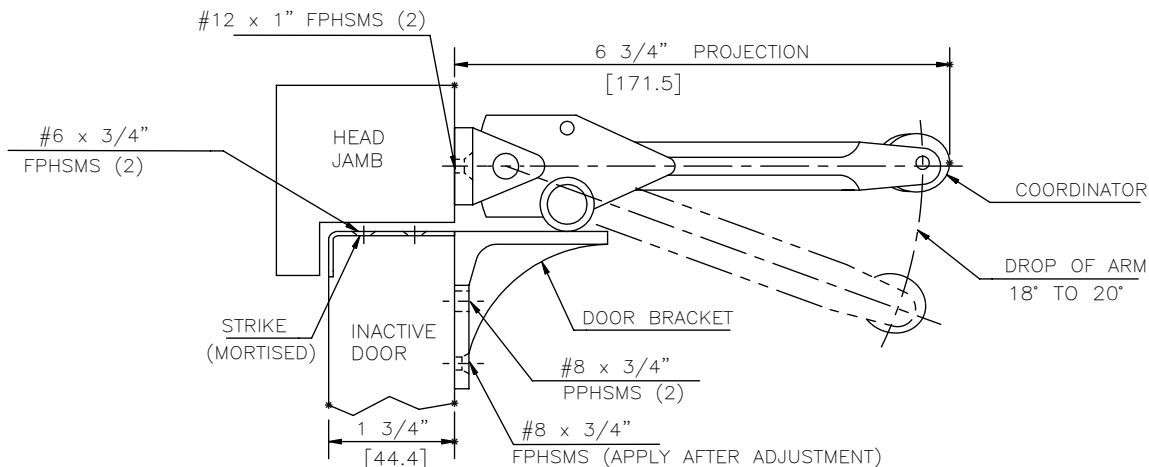
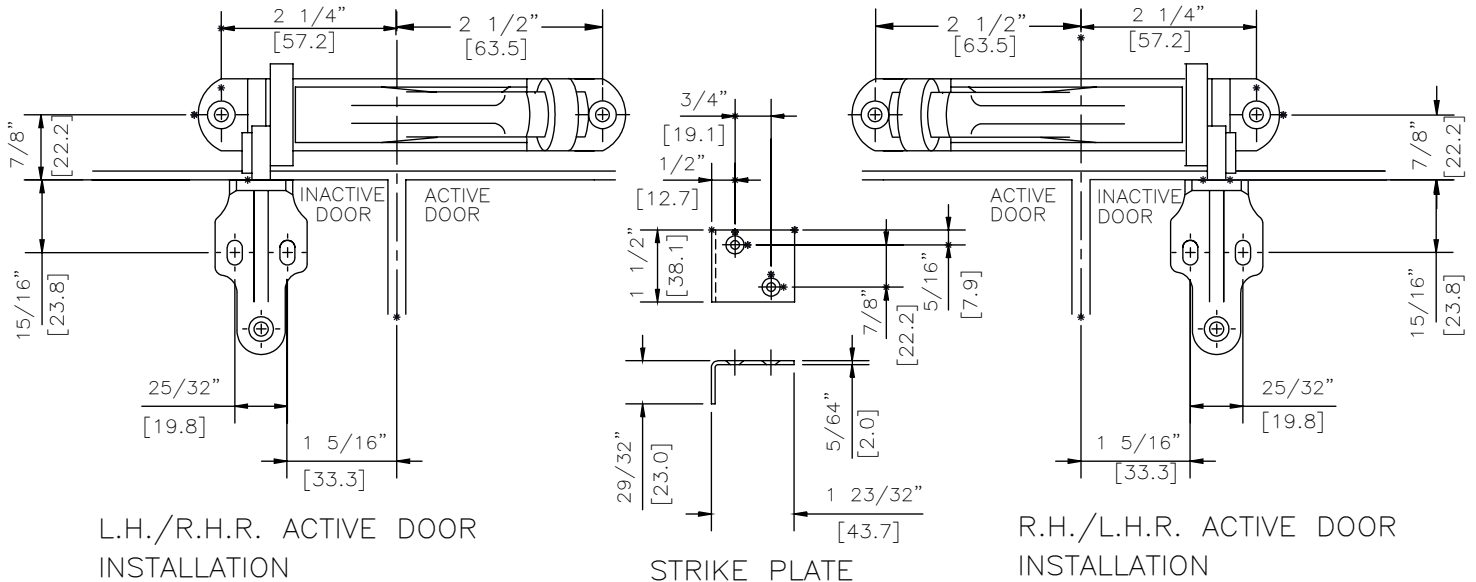


ILLUSTRATION OF L.H./R.H.R. ACTIVE DOOR INSTALLATION

ALL NON-BRACKETED DIMENSIONS ARE IN INCHES, ALL BRACKETED DIMENSIONS ARE IN MILLIMETERS.



FASTENER INSTALLATION— SIDE VIEW DO NOT SCALE

