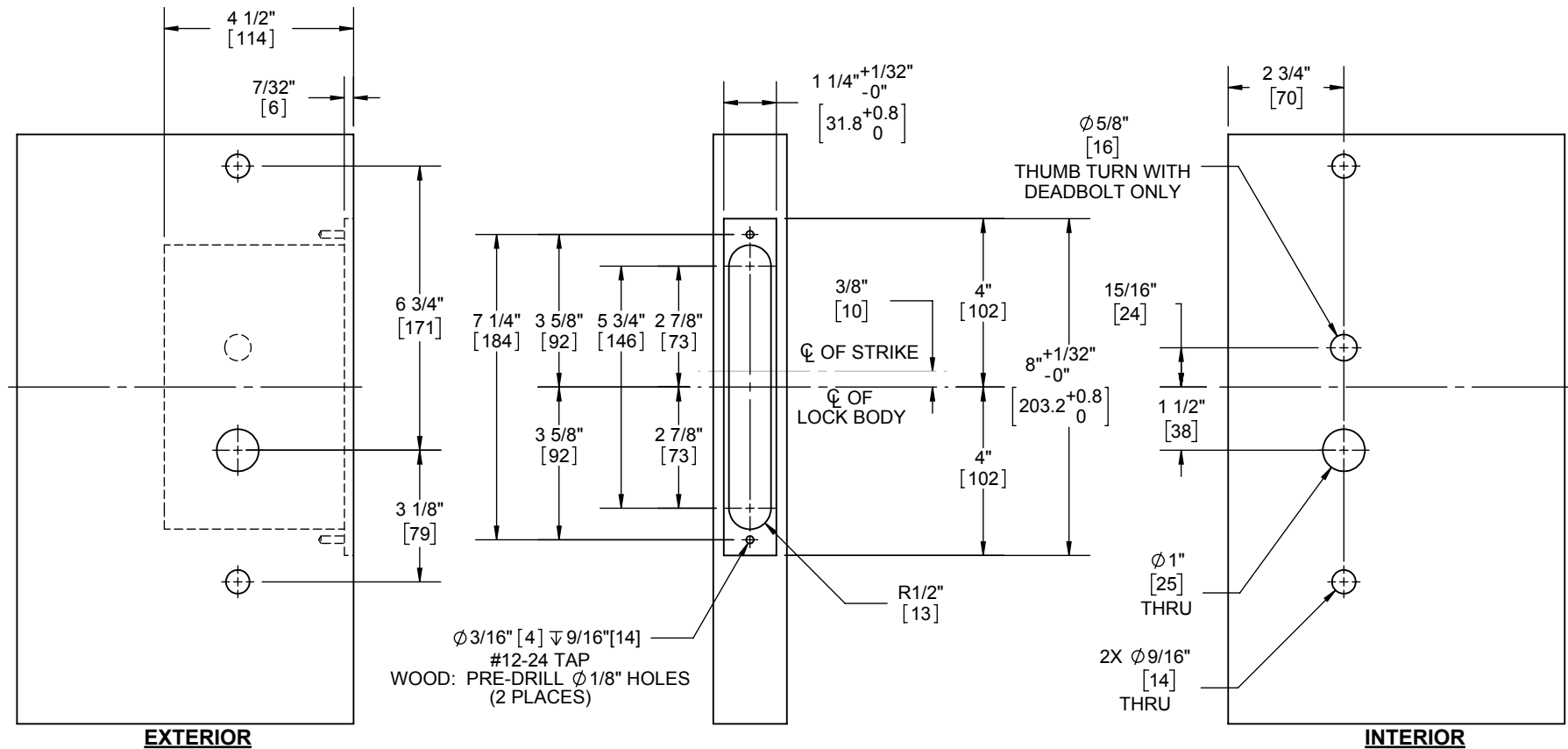
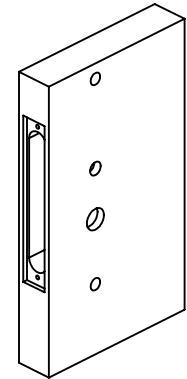


REV.	DESCRIPTION	ECO NO.	DATE
-	SAVED AS SEPARATE TEMPLATE, UPDATED MODEL DESCRIPTIONS	OT18001	6/27/2018
01	MOVED STRIKE CENTERLINE NOTE TO REFERENCED DIMENSION	OT18001	8/27/2018



**PROPRIETARY & CONFIDENTIAL**

THE INFORMATION CONTAINED IN THIS DRAWING IS THE SOLE PROPERTY OF HAGER COMPANIES. ANY REPRODUCTION IN PART OR AS A WHOLE WITHOUT THE WRITTEN PERMISSION OF HAGER COMPANIES IS PROHIBITED.

HAGER RESERVES THE RIGHT TO MAKE DESIGN CHANGES WITHOUT NOTICE. CALL HAGER ENGINEERING AT 1-800-325-9995 FOR THE LATEST REVISION DATE OF TEMPLATE.

MATERIAL	Material <not specified>	
FINISH	DO NOT SCALE DRAWING	

DRAWN	KJW	9/30/2016
ENG. APPR.	MAM	6/27/2018
Q.A.		
TOLERANCES:		
FRACTIONAL: ±0.015"		
ANGULAR: MACH: ±1° BEND: ±1°		
TWO PLACE DECIMAL: ±0.01"		
THREE PLACE DECIMAL: ±0.004"		

27390094		REV. 01
HS4 LOCKING KIT WITH MATING WIDE BODY ESCUTCHEON DOOR PREP		
SIZE A	DWG. NO. T-LS02308	
SCALE: 1:4	WEIGHT: 5.93	SHEET 1 OF 1