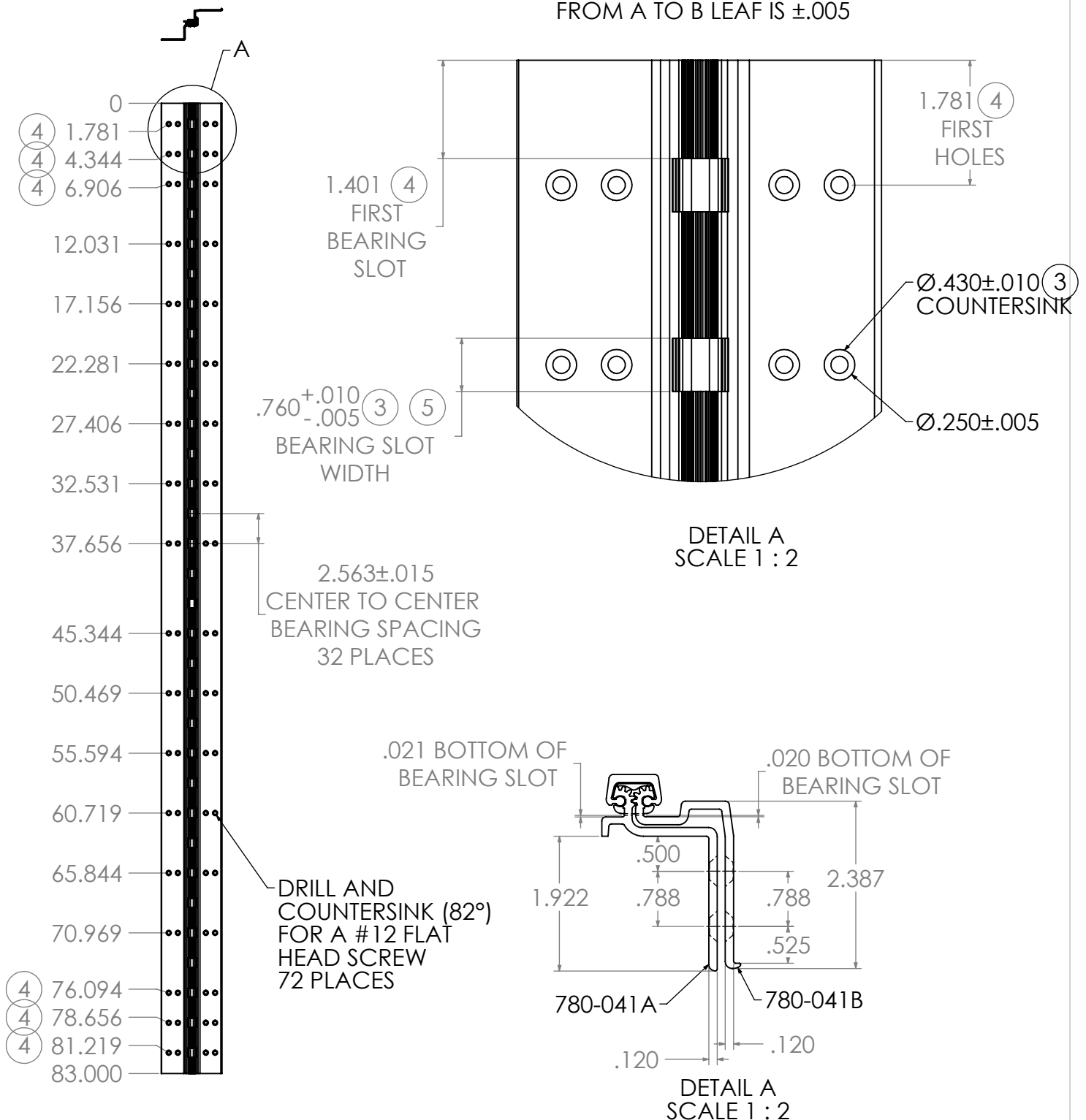


BEARING SLOT ALIGNMENT
FROM A TO B LEAF IS ±.005



LEFT HAND SHOWN
RIGHT HAND OPPOSITE



REVISIONS				
REV.	DESCRIPTION	ECO NO.	BY	DATE
2	NEW HOLE PATTERN, CHANGE TOLERANCE	RT16015	KKJ	05/25/16
3	CHANGE SLOT WIDTH AND COUNTER SINK DEPTH	RT16065	KKJ	12/19/16
4	ALIGN & PACK WITH BEARINGS	RT17005	KKJ	06/06/17
5	CHANGE SLOT WIDTH TOLERANCE	RT18012	KKJ	07/18/18

TOLERANCE:
 X = ± .060"
 XX = ± .030"
 XXX = ± .015"
 ANGLE = ± 2°
 FRACTION = ± 1/32

REMOVE ALL BURRS
BREAK SHARP EDGES .01 MAX

DRAWN BY: SDC DATE: 10/25/96
 WEIGHT: 5.50 LBS. SCALE: 1:12

DESCRIPTION:
**OLD STYLE
 780-041 LEAD LINE
 ROTON HINGE
 83" LONG**

DRAWING NO.
780-041-LL-83

REV.
5