

XS4 One

For Deadlatches

$\varnothing 9/16''$
($\varnothing 14$)

1-1/8" (28,6mm)
BACKSET

1-1/2" (38,1mm)
BACKSET

$\varnothing 1-3/8''$
($\varnothing 35$)

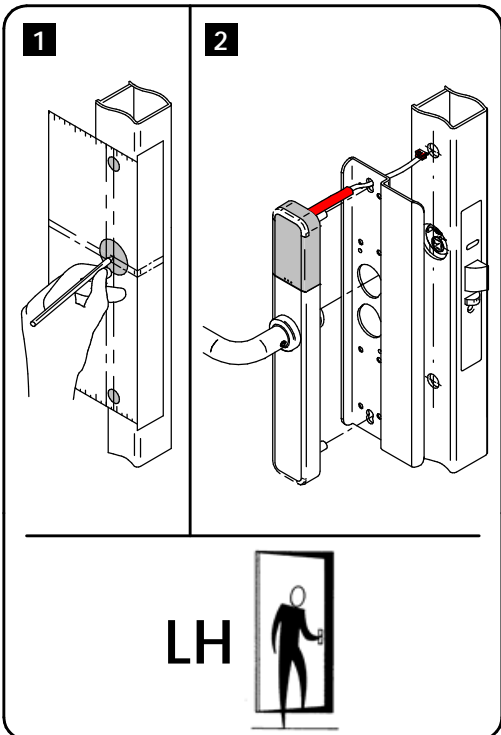
⌘ CYLINDER AXIS
⌘ HANDLE AXIS

3-61/64"
(100,5)

7/32"
(5,4)

5-59/64"
(150,4)

FOLD ALONG DOOR EDGE



SALTO
inspired access

$\varnothing 9/16''$
($\varnothing 14$)

3-61/64"
(100,5)

1-1/8" (28,6mm)
BACKSET

1-1/2" (38,1mm)
BACKSET

Ø9/16"
(Ø14)

XS4 One

For Deadlatches

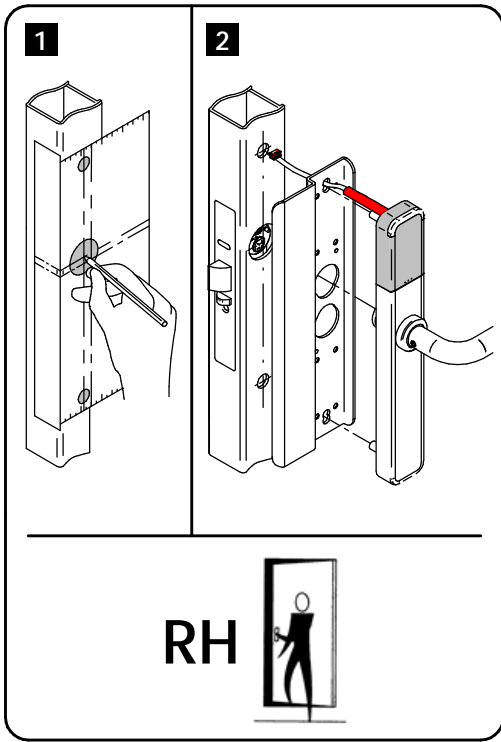
Ø1-3/8"
(Ø35)

⌘ CYLINDER AXIS
⌘ HANDLE AXIS

7/32"
(5,4)

5-59/64"
(150,4)

FOLD ALONG DOOR EDGE



Ø9/16"
(Ø14)

SALTO
inspiredaccess