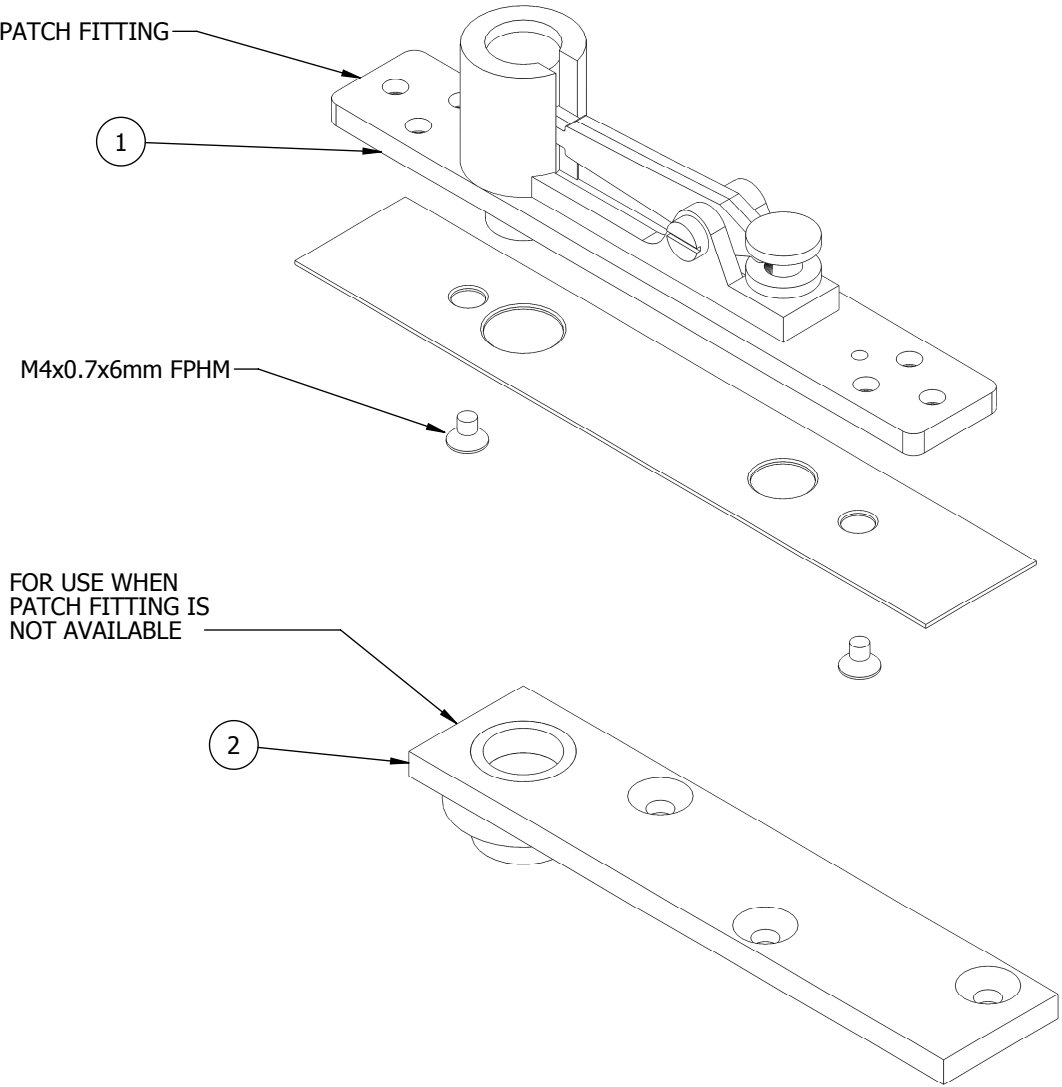



SCREW BAG INCLUDES:	
QTY.	DESCRIPTION
3	#14x30mm FPHS
4	#10x30mm FPHW
4	M5 x 0.8 x 25mm FPHM
3	M6 x 1.0 x 25mm FPHM

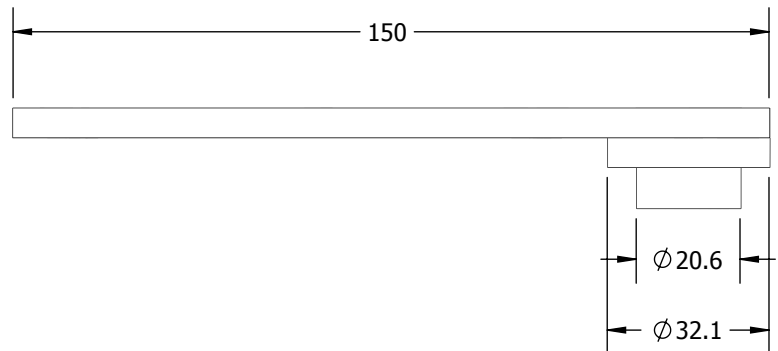
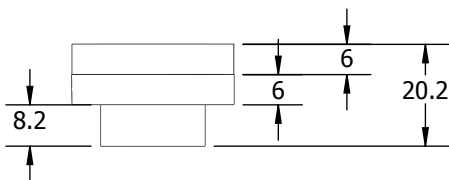
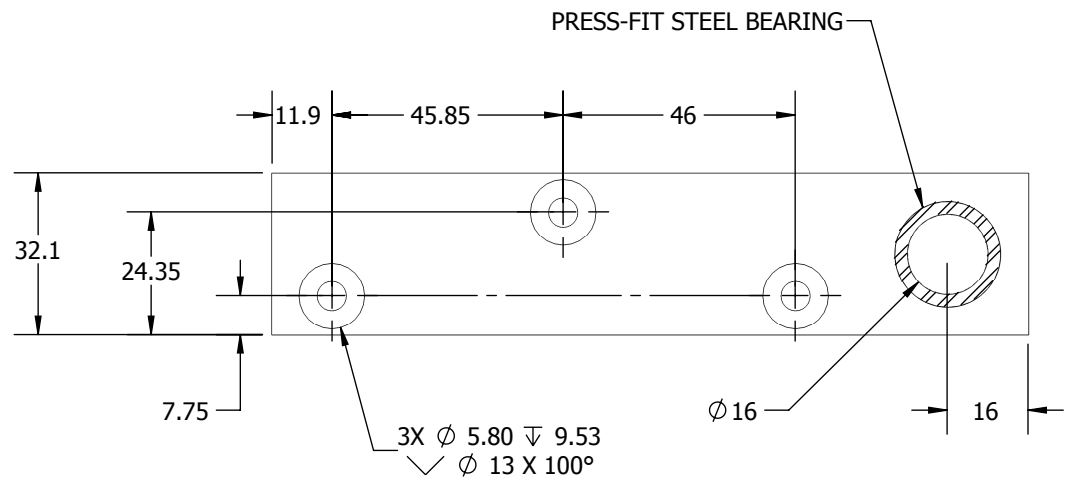
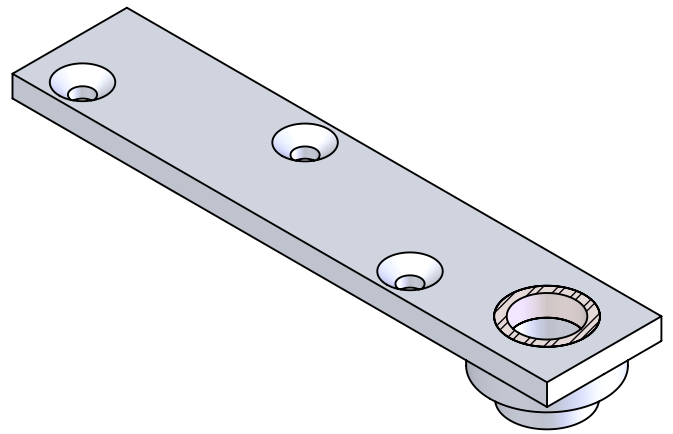
REV.	DESCRIPTION	ECO NO.	DATE
-	initial check-in	CDP12005	11/9/2012
01	UPDATED SCREW BAG	-	10/29/2014

COMPATABLE WITH 652 PATCH FITTING



ITEM NO.	PART NUMBER	DESCRIPTION
1	S-TA00993	15mm JAMB PIVOT
2	S-TA00990	TOP OF DOOR PIVOT
3	-	SCREW BAG (NOT SHOWN)

 <p>PROPRIETARY & CONFIDENTIAL THE INFORMATION CONTAINED IN THIS DRAWING IS THE SOLE PROPERTY OF HAGER COMPANIES. ANY REPRODUCTION IN PART OR AS A WHOLE WITHOUT THE WRITTEN PERMISSION OF HAGER COMPANIES IS PROHIBITED.</p>	<p>HAGER RESERVES THE RIGHT TO MAKE DESIGN CHANGES WITHOUT NOTICE. CALL HAGER ENGINEERING AT 1-800-325-9995 FOR THE LATEST REVISION DATE OF TEMPLATE.</p>	DRAWN	RTHOMP	10/29/2012	<p>2-659-0150 TOP AND BOTTOM PIVOT KIT (15mm SPINDLE)</p>		
		MATERIAL	Material <not specified>			ENG. APPR.	-
		FINISH	-			Q.A.	
		DO NOT SCALE DRAWING		<p>TOLERANCES: FRACTIONAL: ±0.015" ANGULAR: MACH: ± 1° BEND: ±1° TWO PLACE DECIMAL: ±0.01" THREE PLACE DECIMAL: ±0.004"</p>		SIZE	DWG. NO.
		A		S-TA00999	REV. 01		
		SCALE:2:3		WEIGHT: 67.21			
				SHEET 1 OF 3			



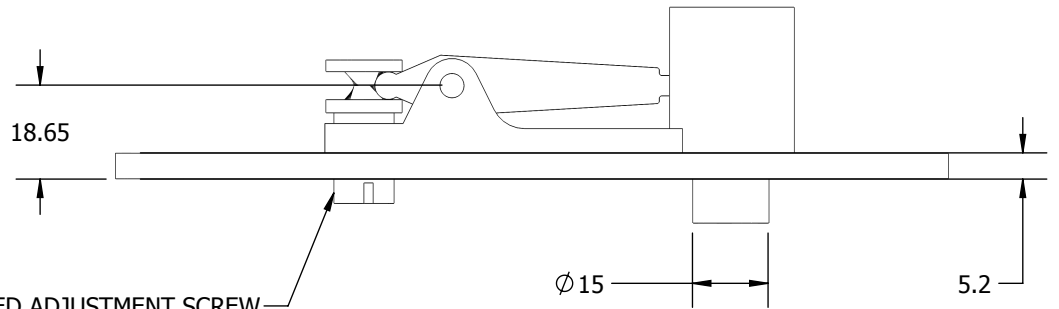
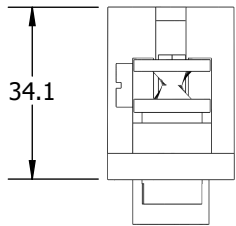
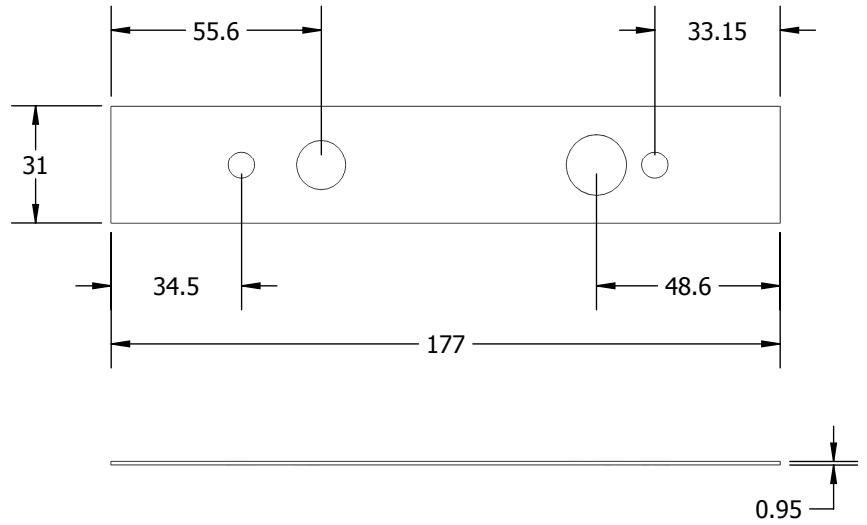
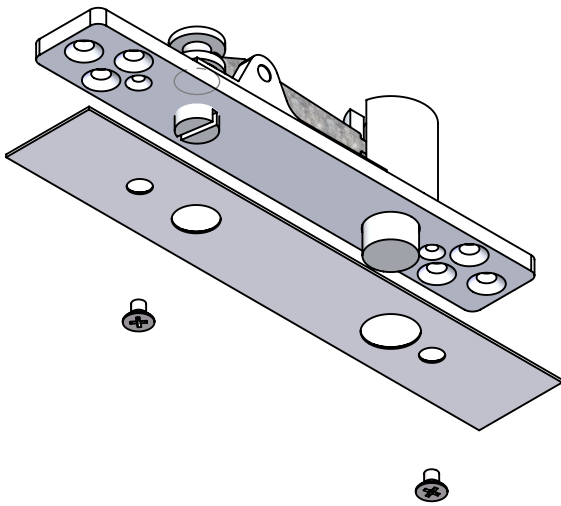
PROPRIETARY & CONFIDENTIAL
 THE INFORMATION CONTAINED
 IN THIS DRAWING IS THE SOLE
 PROPERTY OF HAGER
 COMPANIES. ANY REPRODUCTION
 IN PART OR AS A WHOLE WITHOUT
 THE WRITTEN PERMISSION OF
 HAGER COMPANIES IS PROHIBITED.

HAGER RESERVES
 THE RIGHT TO
 MAKE DESIGN
 CHANGES
 WITHOUT NOTICE.
 CALL HAGER
 ENGINEERING AT
 1-800-325-9995
 FOR THE LATEST
 REVISION DATE
 OF TEMPLATE.

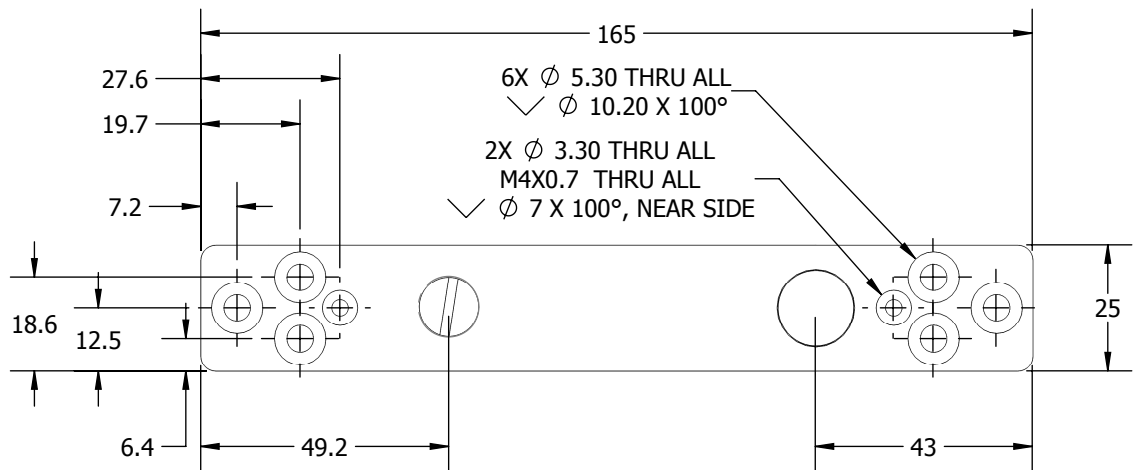
MATERIAL	ALUMINUM
FINISH	MIL
DO NOT SCALE DRAWING	

DRAWN	RCT	10/29/2012
ENG. APPR.	-	-
Q.A.		
TOLERANCES: FRACTIONAL: $\pm 0.015"$ ANGULAR: MACH: $\pm 1^\circ$ BEND: $\pm 1^\circ$ TWO PLACE DECIMAL: $\pm 0.01"$ THREE PLACE DECIMAL: $\pm 0.004"$		

TOP OF DOOR PIVOT		REV.	01
SIZE	DWG. NO.	S-TA00999	
A	SCALE: 2:3	WEIGHT: 17.98	SHEET 2 OF 3



M12 x1.75 SLOTTED ADJUSTMENT SCREW



PROPRIETARY & CONFIDENTIAL
 THE INFORMATION CONTAINED
 IN THIS DRAWING IS THE SOLE
 PROPERTY OF HAGER
 COMPANIES. ANY REPRODUCTION
 IN PART OR AS A WHOLE WITHOUT
 THE WRITTEN PERMISSION OF
 HAGER COMPANIES IS PROHIBITED.

HAGER RESERVES
 THE RIGHT TO
 MAKE DESIGN
 CHANGES
 WITHOUT NOTICE.
 CALL HAGER
 ENGINEERING AT
 1-800-325-9995
 FOR THE LATEST
 REVISION DATE
 OF TEMPLATE.

DRAWN	RTHOMP	10/26/2012
ENG. APPR.	-	-
MATERIAL	ALUMINUM	
FINISH	US26D	
DO NOT SCALE DRAWING		
TOLERANCES: FRACTIONAL: ±0.015" ANGULAR: MACH: ±1° BEND: ±1° TWO PLACE DECIMAL: ±0.01" THREE PLACE DECIMAL: ±0.004"		

- 15mm JAMB PIVOT		
SIZE	DWG. NO.	REV.
A	S-TA00999	01
SCALE: 1:2	WEIGHT: 44.16	SHEET 3 OF 3