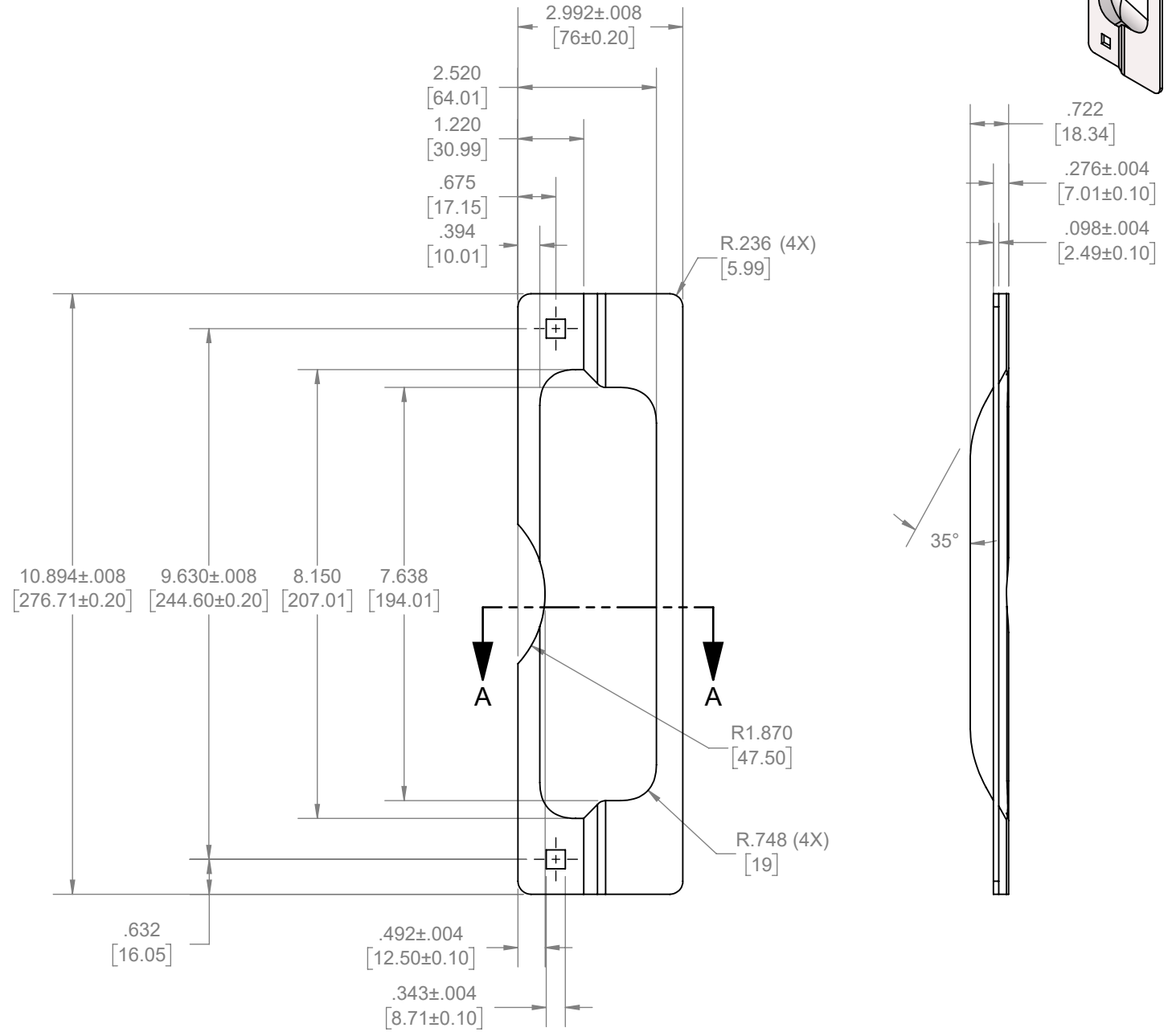
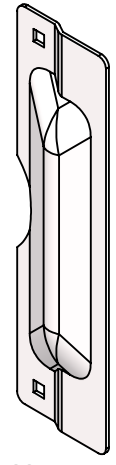
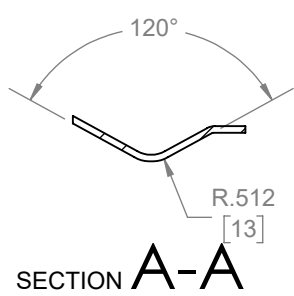


REV	RELEASE DATE	ECO	CHANGE DESCRIPTION	ENGINEER
1	08/16/2021	OT21001	ADDED FASTENER INFORMATION	MA
-	01/18/2016	-	NEW DRAWING	

Assembly BOM Table		
ITEM NO.	DESCRIPTION	QTY.
1	LATCH GUARD W/ CUTOUT	1
2	5/16"-20 x 1-1/2" Square-Neck Carriage Bolt	2
3	5/16"-20 x 0.67" Sex Nut	2
4	I-TA01223 Installation Instructions	1



<p>PROPRIETARY & CONFIDENTIAL THE INFORMATION CONTAINED IN THIS DRAWING IS THE SOLE PROPERTY OF HAGER COMPANIES. ANY REPRODUCTION IN PART OR AS A WHOLE WITHOUT THE WRITTEN PERMISSION OF HAGER COMPANIES IS PROHIBITED.</p>	<p>HAGER RESERVES THE RIGHT TO MAKE DESIGN CHANGES WITHOUT NOTICE. CALL HAGER ENGINEERING AT 1-800-325-9995 FOR THE LATEST REVISION DATE OF TEMPLATE.</p>	DRAWN	MRJ	5/25/2012	<p>341C LATCH GUARD W/ CUTOUT</p>		
		MATERIAL	304 Stainless Steel	ENG. APPR.		-	
		FINISH	AS SPECIFIED	Q.A.			
		DO NOT SCALE DRAWING				<p>TOLERANCES: FRACTIONAL: ±0.015" ANGULAR: MACH: ± 1° BEND: ±1° TWO PLACE DECIMAL: ±0.03" THREE PLACE DECIMAL: ±0.010"</p>	
<p>SIZE A</p>		<p>DWG. NO. S-TA00974</p>		<p>REV. 01</p>			
SCALE: 1:2		WEIGHT: 0.33		SHEET 1 OF 1			