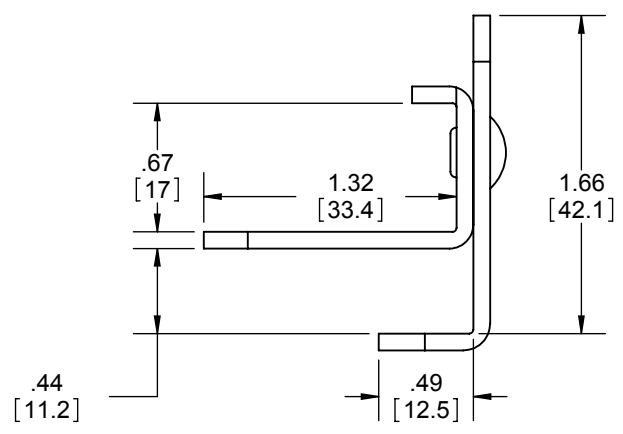
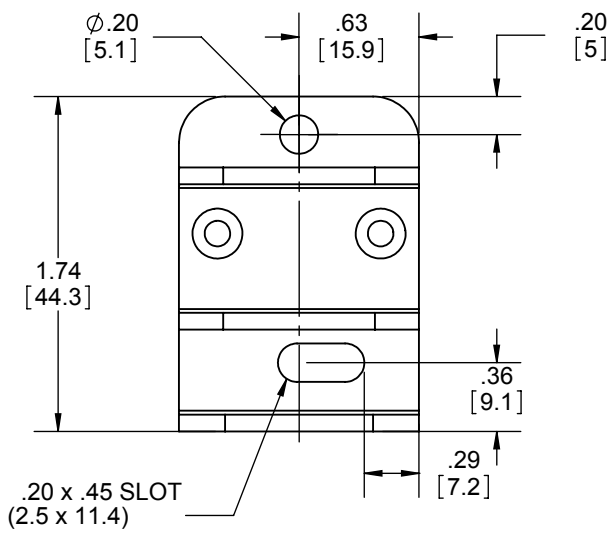
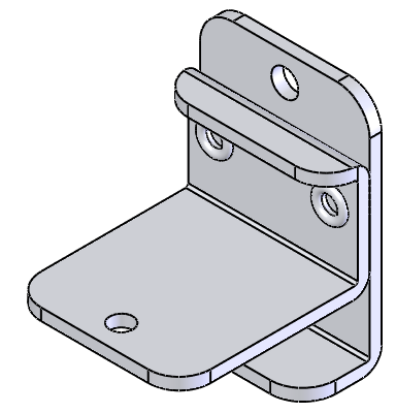
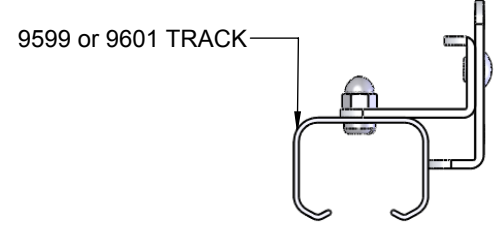
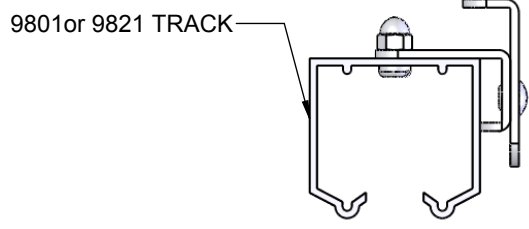
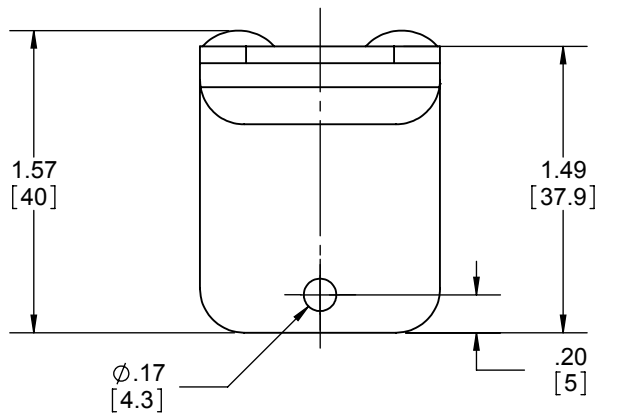


REVISIONS		
REV.	DESCRIPTION	DATE
01	NEW DRAWING FOR WEB	3/19/2008



NOTES:
 - REVERSIBLE SIDE MOUNT BRACKET
 - RIVETED ASSEMBLY
 - MOUNT AT ENDS OF TRACK AND EVERY FOOT

HARDWARE INCLUDED:
 - 1PC #10-24 x 1-1/2" CROSS PAN HEAD SCREW
 - 1PC #10-24 x 3/8" CROSS PAN HEAD SCREW
 - 1PC #10 WASHER
 - 1PC WHITE SCREW CAP



PROPRIETARY & CONFIDENTIAL
 THE INFORMATION CONTAINED IN THIS DRAWING IS THE SOLE PROPERTY OF HAGER COMPANIES. ANY REPRODUCTION IN PART OR AS A WHOLE WITHOUT THE WRITTEN PERMISSION OF HAGER COMPANIES IS PROHIBITED.

HAGER RESERVES THE RIGHT TO MAKE DESIGN CHANGES WITHOUT NOTICE. CALL HAGER ENGINEERING AT 1-800-325-9995 FOR THE LATEST REVISION DATE OF TEMPLATE.

MATERIAL	STEEL
FINISH	ZINC PLATED
DO NOT SCALE DRAWING	

DRAWN	NJANSEN	1/9/2008
ENG. APPR.	M MCRAE	3/19/2008
Q.A.		
TOLERANCES: FRACTIONAL: ±0.015" ANGULAR: MACH: ±1° BEND: ±1° TWO PLACE DECIMAL: ±0.01" THREE PLACE DECIMAL: ±0.004"		

9900		REV.
SIDE MOUNT BRACKET		01+
SIZE	DWG. NO.	
A	S-SD00021	
SCALE: 1:1	WEIGHT: 0.14	SHEET 1 OF 1