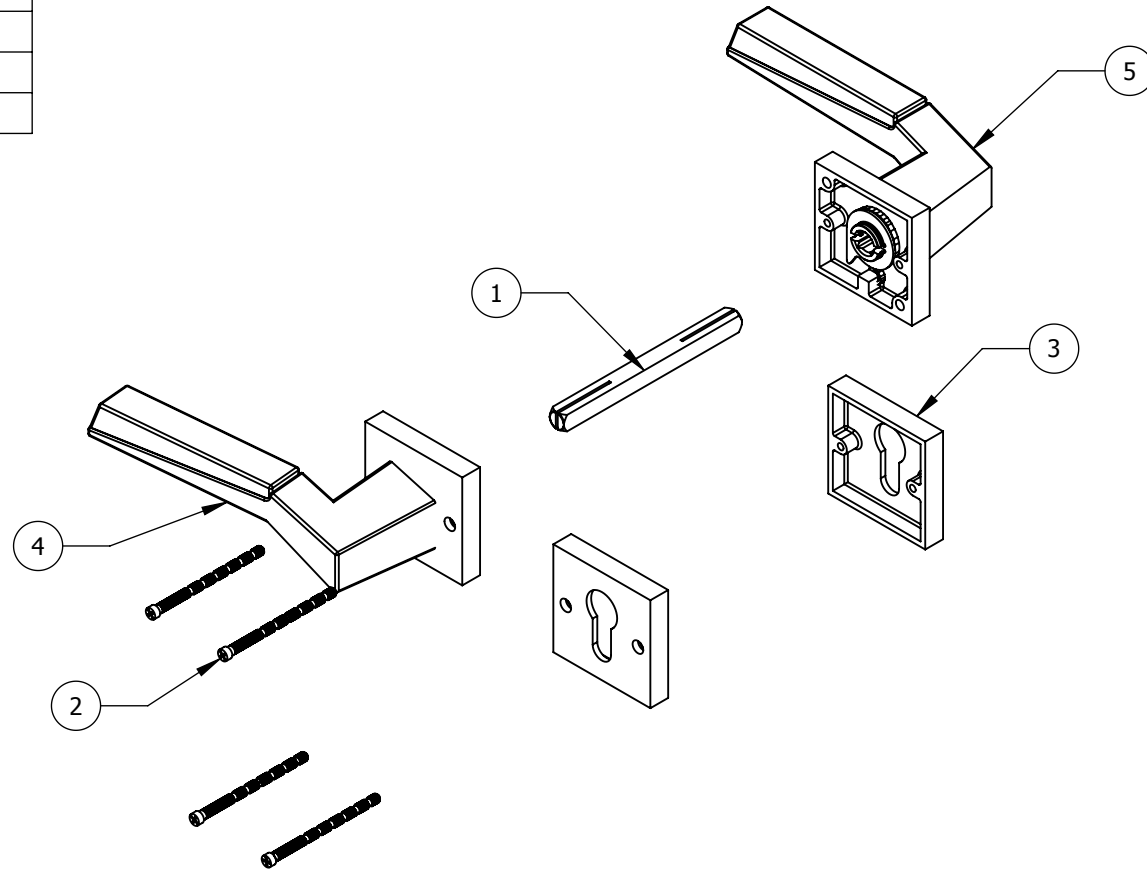


ITEM NO.	FILE NAME	QTY
1	S-LS00837	1
2	S-LS01019	4
3	S-LS01098	1
4	S-LS01106	1
5	S-LS01106	1



Right hand shown, see page 2 for Left Hand

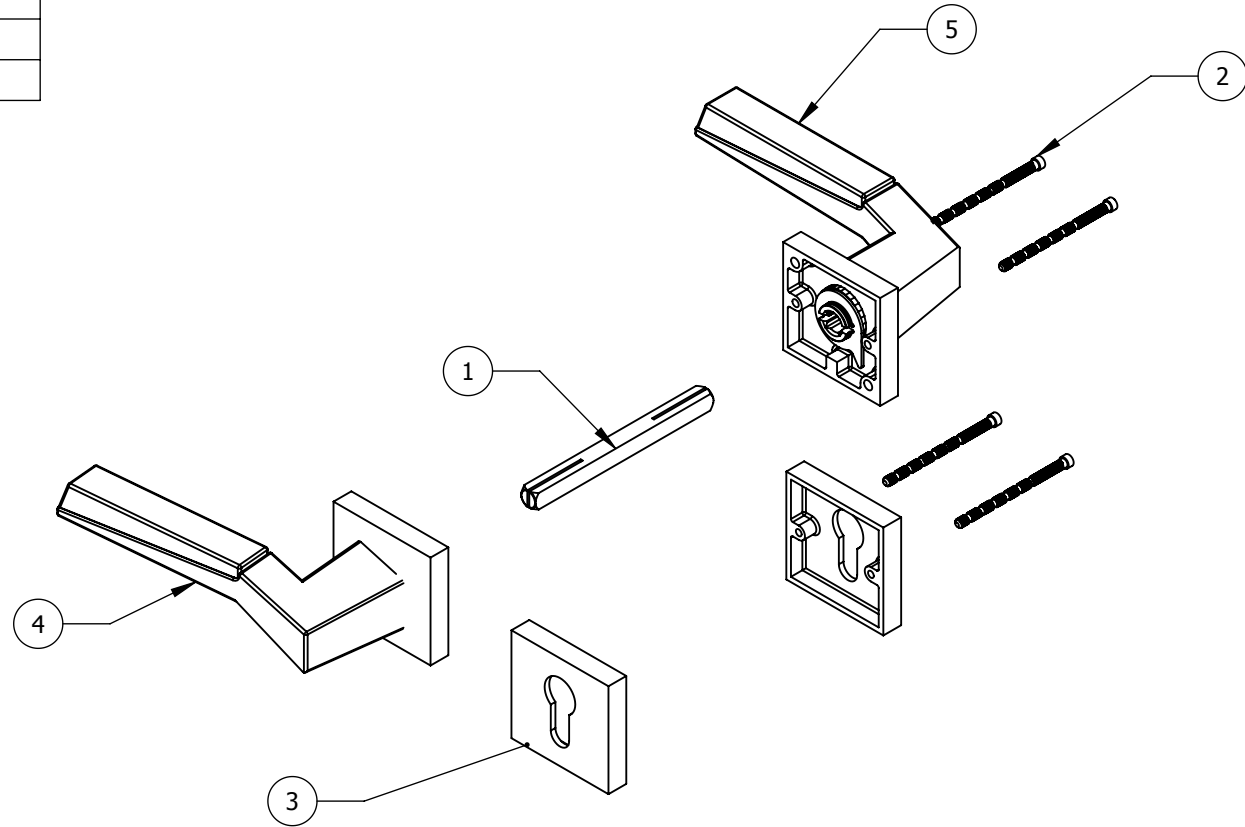


HAGER RESERVES THE RIGHT TO MAKE DESIGN CHANGES WITHOUT NOTICE. CALL HAGER ENGINEERING AT 1-800-325-9995 FOR THE LATEST REVISION DATE OF TEMPLATE.

PRIMARY DIMENSIONS SHOWN IN MILLIMETERS, DIMENSIONS IN [] ARE INCHES.

	DRAWN	RTHOMP	7/29/2011	6830 RH EURO STYLE MORTISE LOCK LEVER	
	ENG. APPR.	-	-		
MATERIAL	STAINLESS		Q.A.		
FINISH	US32D		TOLERANCES:		SIZE
			FRACTIONAL: ±0.031"		DWG. NO.
			ANGULAR: MACH: ± 1° BEND: ±1°		S-LS01107
			TWO PLACE DECIMAL: ±0.01"		REV.
			THREE PLACE DECIMAL: ±0.004"		01
DO NOT SCALE DRAWING	SCALE: 1:3	WEIGHT: 1369.46	SHEET 1 OF 3		

ITEM NO.	FILE NAME	QTY
1	S-LS00837	1
2	S-LS01019	4
3	S-LS01098	1
4	S-LS01106	1
5	S-LS01106	1



Left hand shown, see
page 1 for Right Hand

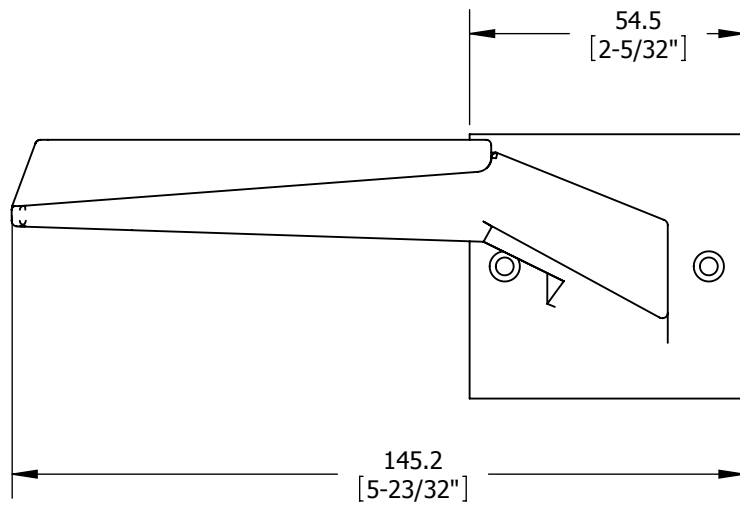
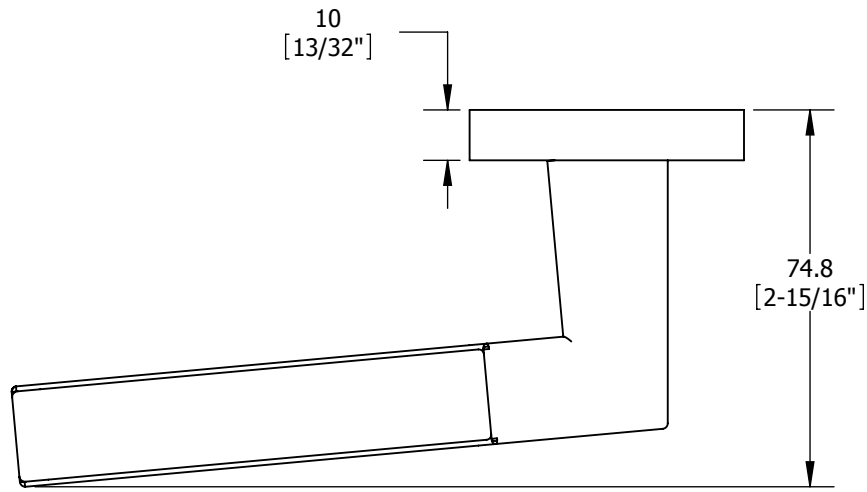


HAGER RESERVES THE RIGHT TO MAKE DESIGN CHANGES WITHOUT NOTICE. CALL HAGER ENGINEERING AT 1-800-325-9995 FOR THE LATEST REVISION DATE OF TEMPLATE.


PRIMARY DIMENSIONS SHOWN IN MILLIMETERS, DIMENSIONS IN [] ARE INCHES.

	DRAWN	DRS	7/7/2014	6830 LH EURO STYLE MORTISE LOCK LEVER	
	ENG. APPR.	-	-		
MATERIAL	STAINLESS		Q.A.		
FINISH	US32D		TOLERANCES:		SIZE
DO NOT SCALE DRAWING			FRACTIONAL: $\pm 0.031''$ ANGULAR: MACH: $\pm 1^\circ$ BEND: $\pm 1^\circ$ TWO PLACE DECIMAL: $\pm 0.01''$ THREE PLACE DECIMAL: $\pm 0.004''$		DWG. NO.
					S-LS01107
					REV. 01
				SCALE: 1:3	WEIGHT: 1369.46
					SHEET 2 OF 3

REV.	DESCRIPTION	ECO NO.	DATE
------	-------------	---------	------



Right hand shown.

 <p>PROPRIETARY & CONFIDENTIAL THE INFORMATION CONTAINED IN THIS DRAWING IS THE SOLE PROPERTY OF HAGER COMPANIES. ANY REPRODUCTION IN PART OR AS A WHOLE WITHOUT THE WRITTEN PERMISSION OF HAGER COMPANIES IS PROHIBITED.</p>	<p>HAGER RESERVES THE RIGHT TO MAKE DESIGN CHANGES WITHOUT NOTICE. CALL HAGER ENGINEERING AT 1-800-325-9995 FOR THE LATEST REVISION DATE OF TEMPLATE.</p>	DRAWN	RTHOMP	7/29/2011	6830		
		ENG. APPR.	-	-	EURO STYLE MORTISE LOCK LEVER		
		MATERIAL	STAINLESS		Q.A.		
		FINISH	US32D		TOLERANCES: FRACTIONAL: ±0.015" ANGULAR: MACH: ± 1° BEND: ±1° TWO PLACE DECIMAL: ±0.01" THREE PLACE DECIMAL: ±0.004"		SIZE
DO NOT SCALE DRAWING				A		S-LS01107	REV.
				SCALE:2:3		WEIGHT: 1369.46	SHEET 3 OF 3