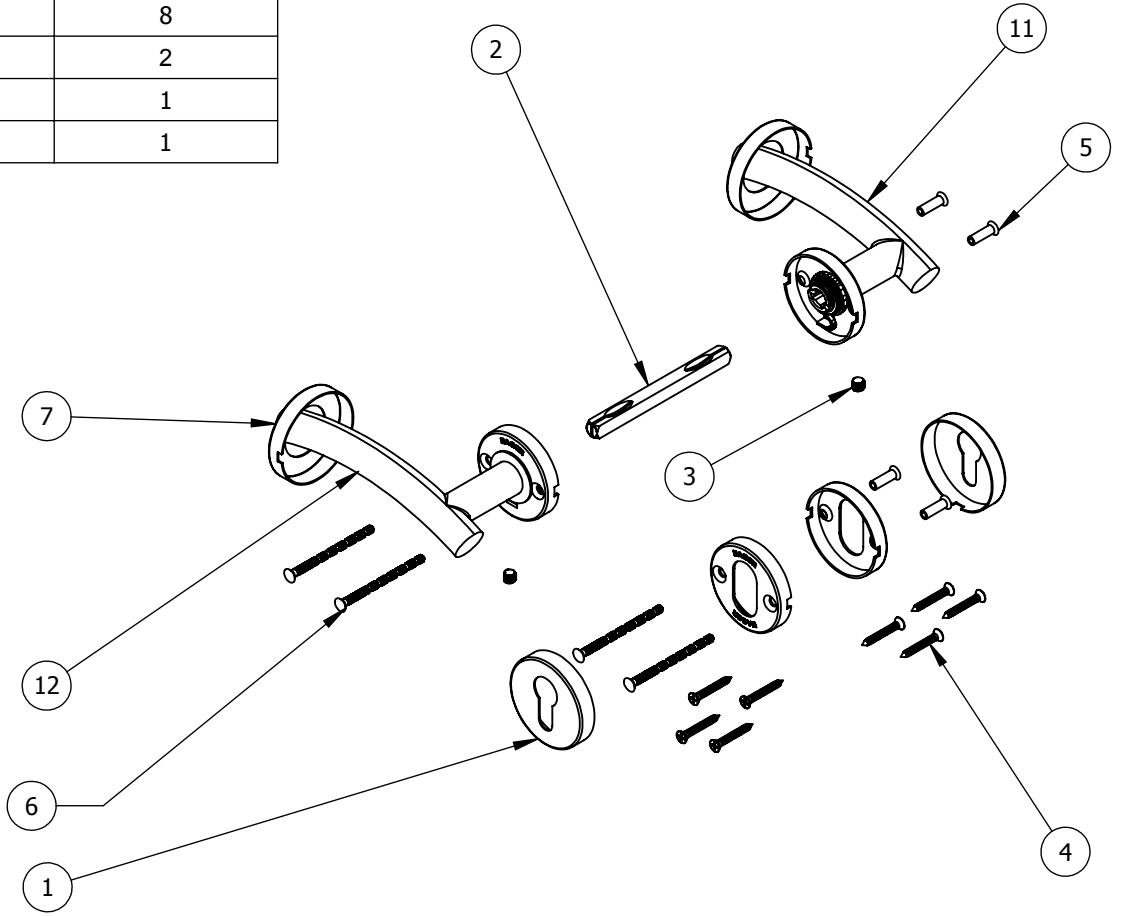


ITEM NO.	FILE NAME	BOX/QTY.
1	S-LS00703	1
2	S-LS00837	1
3	S-LS01023	2
4	flat countersunk head tapping screw_ai	8
5	S-LS01018	2
6	S-LS01019	8
7	S-LS01020	2
11	S-LS01233	1
12	S-LS01234	1

NOTE:
 PACKAGED WITH INSTRUCTIONS AND 3mm HEX
 KEY IN BLUE AND WHITE EUROLINE BOX DESIGN

REV.	DESCRIPTION	ECO NO.	DATE
------	-------------	---------	------

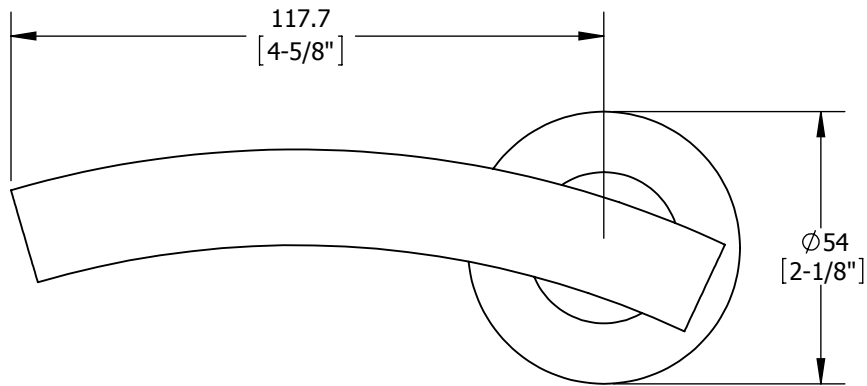
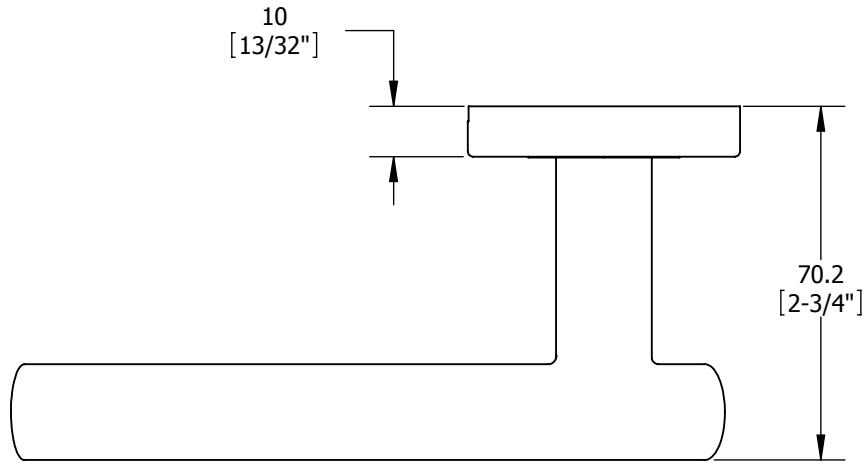



PROPRIETARY & CONFIDENTIAL
 THE INFORMATION CONTAINED
 IN THIS DRAWING IS THE SOLE
 PROPERTY OF HAGER
 COMPANIES. ANY REPRODUCTION
 IN PART OR AS A WHOLE WITHOUT
 THE WRITTEN PERMISSION OF
 HAGER COMPANIES IS PROHIBITED.

HAGER RESERVES
 THE RIGHT TO
 MAKE DESIGN
 CHANGES
 WITHOUT NOTICE.
 CALL HAGER
 ENGINEERING AT
 1-800-325-9995
 FOR THE LATEST
 REVISION DATE
 OF TEMPLATE.

DRAWN	RTHOMP	4/14/2011
ENG. APPR.	-	-
MATERIAL	SS304	
FINISH	-US32D	
DO NOT SCALE DRAWING		
TOLERANCES: FRACTIONAL: ±0.015" ANGULAR: MACH: ±1° BEND: ±1° TWO PLACE DECIMAL: ±0.01" THREE PLACE DECIMAL: ±0.004"		

6811		REV.
EURO STYLE MORTISE LOCK LEVER		+
SIZE	DWG. NO.	REV.
A	S-LS00341	+
SCALE: 1:8	WEIGHT: 552.83	SHEET 1 OF 2



 PROPRIETARY & CONFIDENTIAL THE INFORMATION CONTAINED IN THIS DRAWING IS THE SOLE PROPERTY OF HAGER COMPANIES. ANY REPRODUCTION IN PART OR AS A WHOLE WITHOUT THE WRITTEN PERMISSION OF HAGER COMPANIES IS PROHIBITED.	HAGER RESERVES THE RIGHT TO MAKE DESIGN CHANGES WITHOUT NOTICE. CALL HAGER ENGINEERING AT 1-800-325-9995 FOR THE LATEST REVISION DATE OF TEMPLATE.	DRAWN	RTHOMP	4/14/2011	6811 EURO STYLE MORTISE LOCK LEVER				
		MATERIAL	SS304	ENG. APPR.			-	Q.A.	
		FINISH	US32D	TOLERANCES: FRACTIONAL: ±0.015" ANGULAR: MACH: ±1° BEND: ±1° TWO PLACE DECIMAL: ±0.01" THREE PLACE DECIMAL: ±0.004"			SIZE	DWG. NO.	REV.
		DO NOT SCALE DRAWING					A	S-LS00341	-+
		SCALE: 1:8	WEIGHT: 552.83		SHEET 2 OF 2				