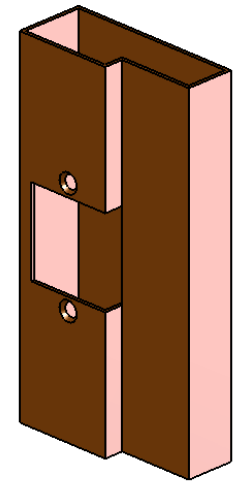
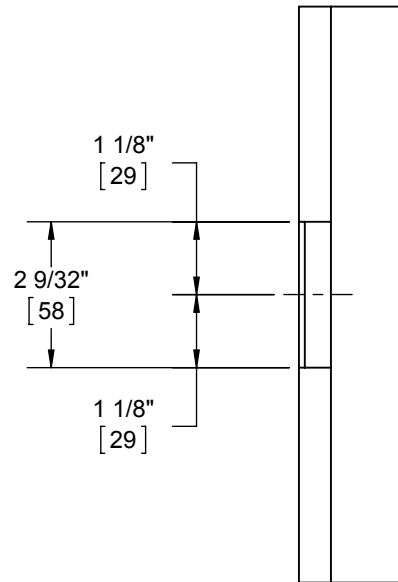
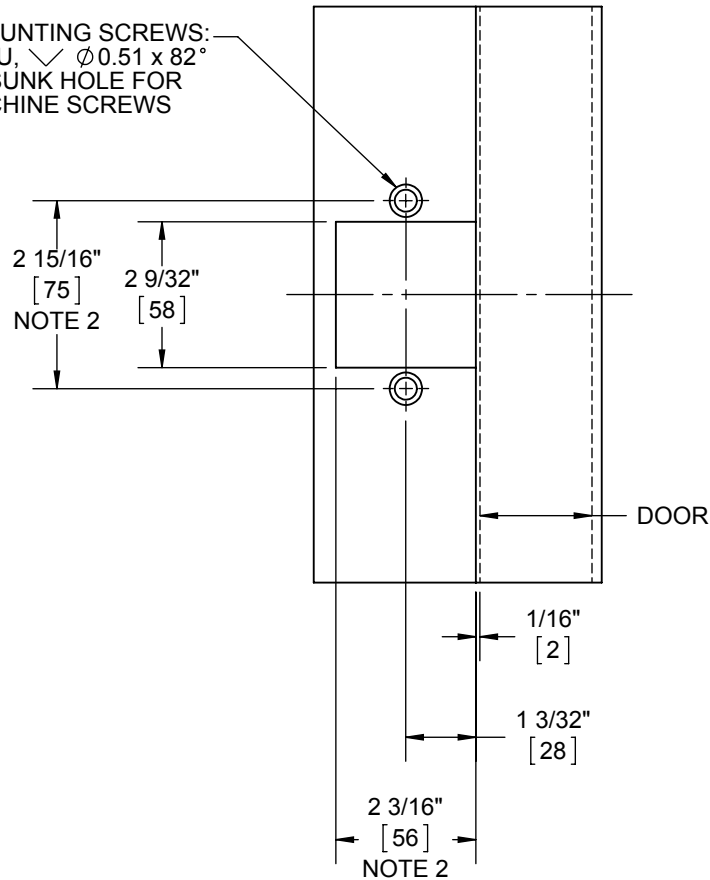


STRIKE MOUNTING SCREWS:
 $\varnothing 0.27$ THRU, $\sphericalangle \varnothing 0.51 \times 82^\circ$
 COUNTERSUNK HOLE FOR
 #10-24 MACHINE SCREWS
 (2 PLACES)



NOTES:

1. RECOMMEND USING A 12 TO 14 GAUGE FRAME WITH THE 4951 SINGLE RABBIT STRIKE.
2. THIS STRIKE REQUIRES A 2-9/32" X 2-3/16" CUTOUT IN THE FRAME.



HAGER RESERVES THE RIGHT TO MAKE DESIGN CHANGES WITHOUT NOTICE. CALL HAGER ENGINEERING AT 1-800-325-9995 FOR THE LATEST REVISION DATE OF TEMPLATE.

PRIMARY DIMENSIONS SHOWN IN INCHES, DIMENSIONS IN [] ARE MILLIMETERS.

| | | |
|--|--------------------------|------------|
| DRAWN | TJS | 11/22/2010 |
| ENG. APPR. | - | - |
| MATERIAL | Material <not specified> | |
| FINISH | - | |
| DO NOT SCALE DRAWING | | |
| TOLERANCES: FRACTIONAL: $\pm 0.015"$ ANGULAR: MACH: $\pm 1^\circ$ BEND: $\pm 1^\circ$ TWO PLACE DECIMAL: $\pm 0.01"$ THREE PLACE DECIMAL: $\pm 0.004"$ | | |

| | | | |
|-----------------------------|----------|--------------|--------------|
| 4600 Single Rabbit Frame | | REV. | 01 |
| SIZE | DWG. NO. | S-ED01235 | |
| A | | SCALE: 1:4 | WEIGHT: 0.35 |
| | | SHEET 1 OF 1 | |