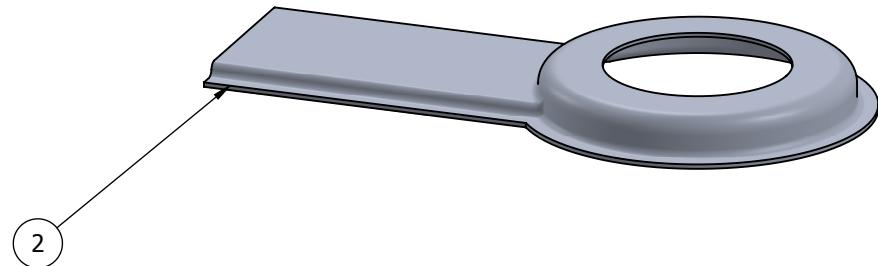
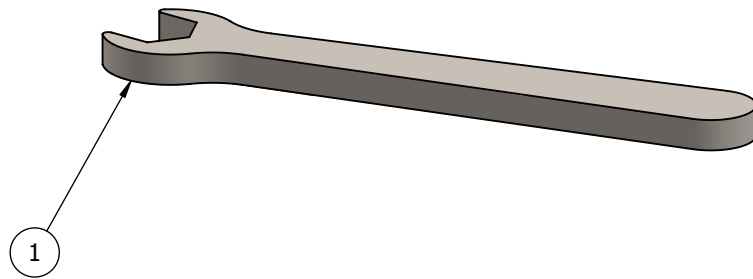


REV.	DESCRIPTION	ECO NO.	DATE
-	INITIAL CHECK IN	NPD14010	3/31/2015



ITEM NO.	FILE NAME	DESCRIPTION	QTY.
1	S-CL00636	Heavy Duty Floor Spring Adjustment Wrench	1
2	S-CL00325	Floor Spring Cover Insert	1
3	N/A	M5-0.8x6mm FPHMS (Not Shown)	4



HAGER RESERVES THE RIGHT TO MAKE DESIGN CHANGES WITHOUT NOTICE. CALL HAGER ENGINEERING AT 1-800-325-9995 FOR THE LATEST REVISION DATE OF TEMPLATE.

PRIMARY DIMENSIONS SHOWN IN INCHES, DIMENSIONS IN [] ARE MILLIMETERS.

MATERIAL	-	DRAWN	DRS	2/12/2015	5800H Heavy Duty Floor Spring Misc. Hardware Bag
FINISH	-	ENG. APPR.	-	-	
DO NOT SCALE DRAWING		TOLERANCES: FRACTIONAL: ±0.015" ANGULAR: MACH: ± 1° BEND: ±1° TWO PLACE DECIMAL: ±0.01" THREE PLACE DECIMAL: ±0.004"			
		SIZE	DWG. NO.		REV.
		A	S-CL00635		-
		SCALE: 1:1	WEIGHT: 32.17		SHEET 1 OF 1