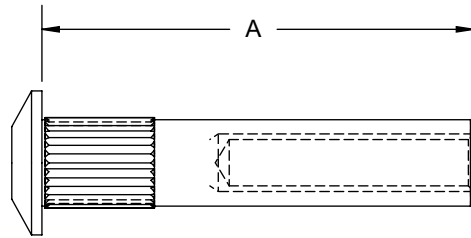


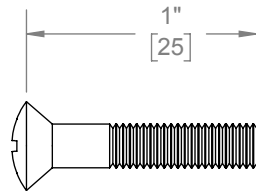
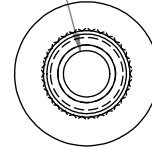
REVISIONS		
REV.	DESCRIPTION	DATE
07	Updated Oval Head Length	6/18/15

NOTE: EACH BAG CONTAINS (4) SEX NUTS AND (4) MACHINE SCREWS

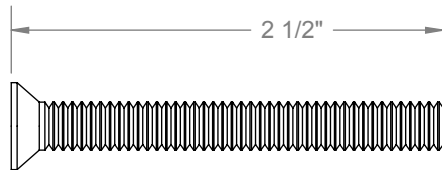


SEX NUT

1/4-20 TAPPED HOLE
1" DEEP



1/4-20 OVAL PHILLIPS HEAD MACHINE SCREW (#3 HEAD)



1/4-20 FLAT PHILLIPS HEAD MACHINE SCREW (#3 HEAD)

SNB SIZING CHART

PART NUMBER	DIMENSION "A"	DOOR THICKNESS	SCREW TYPE	NOTES
5902	1.625"[42]	1.75"[44.5]	1/4-20 x 1" OPHMS	USED ON 5200, 5300, 5400 SERIES
5903	1.25"[32.1]	1.375"[34.9]	1/4-20 x 1" OPHMS	USED ON 5200, 5300, 5400 SERIES
5904	1.875"[47.6]	2"[50.8]	1/4-20 x 1" OPHMS	USED ON 5200, 5300, 5400 SERIES
5905	2.125"[54.1]	2.25"[57.1]	1/4-20 x 1" OPHMS	USED ON 5200, 5300, 5400 SERIES
5940	1.625"[42]	1.75"[44.5]	1/4-20 X 2.5" FPHMS	USED ON 5100 SERIES
5941	1.25"[32.1]	1.375"[34.9]	1/4-20 X 2.5" FPHMS	USED ON 5100 SERIES
5942	1.875"[47.6]	2"[50.8]	1/4-20 X 2.5" FPHMS	USED ON 5100 SERIES
5943	2.125"[54.1]	2.25"[57.1]	1/4-20 X 2.5" FPHMS	USED ON 5100 SERIES



HAGER RESERVES THE RIGHT TO MAKE DESIGN CHANGES WITHOUT NOTICE. CALL HAGER ENGINEERING AT 1-800-325-9995 FOR THE LATEST REVISION DATE OF TEMPLATE.

PRIMARY DIMENSIONS SHOWN IN INCHES, DIMENSIONS IN [] ARE MILLIMETERS.

MATERIAL	Material <not specified>
FINISH	PER CUSTOMER SPEC
DO NOT SCALE DRAWING	
DRAWN	MRJ 12/20/2007
ENG. APPR.	MAM 11/14/2013
Q.A.	
TOLERANCES:	
FRACTIONAL: ±0.015"	
ANGULAR: MACH: ± 1° BEND: ±1°	
TWO PLACE DECIMAL: ±0.01"	
THREE PLACE DECIMAL: ±0.004"	

CLOSER SEX NUTS AND BOLTS		
SIZE	DWG. NO.	REV.
A	S-CL00016	7
SCALE: 1:1	WEIGHT: 0.17	SHEET 1 OF 1