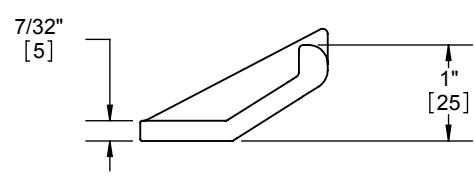
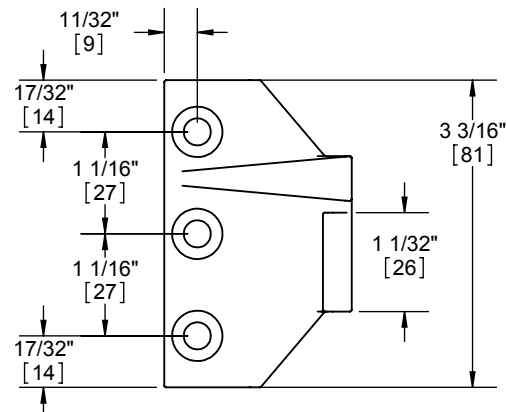
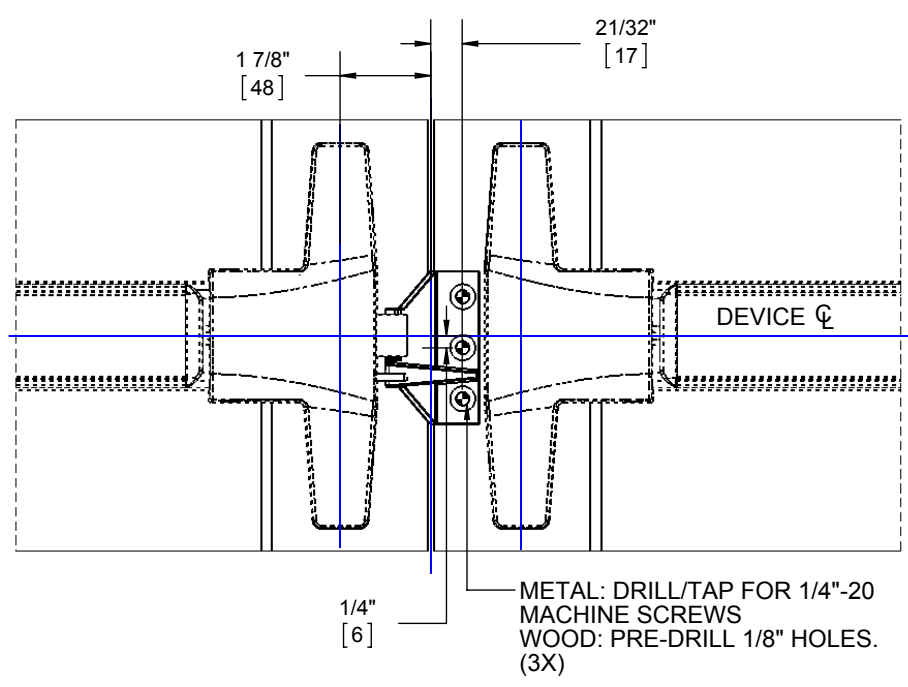
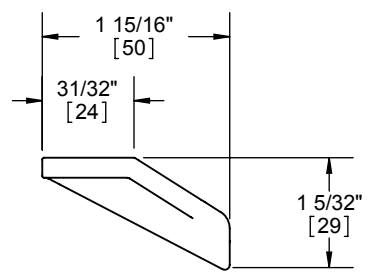
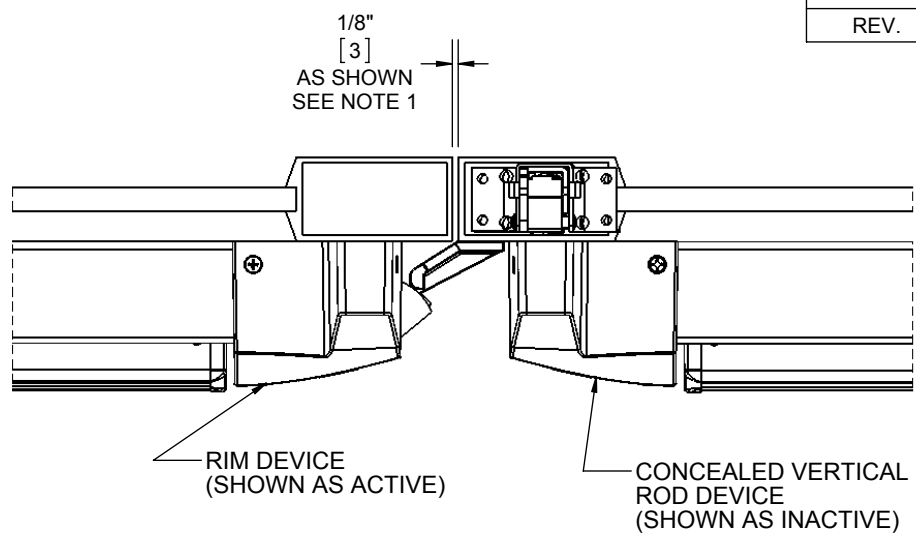


REVISIONS		
REV.	DESCRIPTION	DATE




INSTRUCTIONS

- 1) IDENTIFY DOOR WITH CONCEALED VERTICAL ROD EXIT DEVICE AND MARK DEVICE CENTERLINE IF IT IS NOT ALREADY MARKED ON THE DOOR.
- 2) USE EXIT DEVICE CENTERLINE AND DIMENSIONS SHOWN ON THIS PAGE TO MARK AND DRILL HOLES.
- 3) INSTALL DOUBLE DOOR STRIKE WITH PROVIDED SCREWS.

NOTES

1. STANDARD DOOR GAP IS 1/8" [3.2] ± 1/16" [1.6].
2. 4921 DOUBLE DOOR STRIKE IS NOT FIRE DOOR RATED.
3. USE A COORDINATOR ON INACTIVE DOOR.
4. 4600 CVR DOOR PREPARATION IS SHOWN IN TEMPLATE T-ED01311.
5. A 3-1/4" MINIMUM WIDTH STILE DOOR IS REQUIRED FOR THIS INSTALLATION.

 <p>PROPRIETARY & CONFIDENTIAL THE INFORMATION CONTAINED IN THIS DRAWING IS THE SOLE PROPERTY OF HAGER COMPANIES. ANY REPRODUCTION IN PART OR AS A WHOLE WITHOUT THE WRITTEN PERMISSION OF HAGER COMPANIES IS PROHIBITED.</p>	<p>HAGER RESERVES THE RIGHT TO MAKE DESIGN CHANGES WITHOUT NOTICE. CALL HAGER ENGINEERING AT 1-800-325-9995 FOR THE LATEST REVISION DATE OF TEMPLATE.</p>	DRAWN	WJW	1/11/2013	<p>4921 4600 DOUBLE DOOR STRIKE INSTRUCTIONS & TEMPLATE</p>	
		MATERIAL	Plain Carbon Steel	ENG. APPR.		-
		FINISH	-	Q.A.		-
		DO NOT SCALE DRAWING		<p>TOLERANCES: FRACTIONAL: ±0.015" ANGULAR: MACH: ± 1° BEND: ±1° TWO PLACE DECIMAL: ±0.01" THREE PLACE DECIMAL: ±0.004"</p>		
		SIZE	DWG. NO.		REV.	
		A	T-ED01497		-.01+	
		SCALE: 1:24	WEIGHT: 0.38	SHEET 1 OF 1		