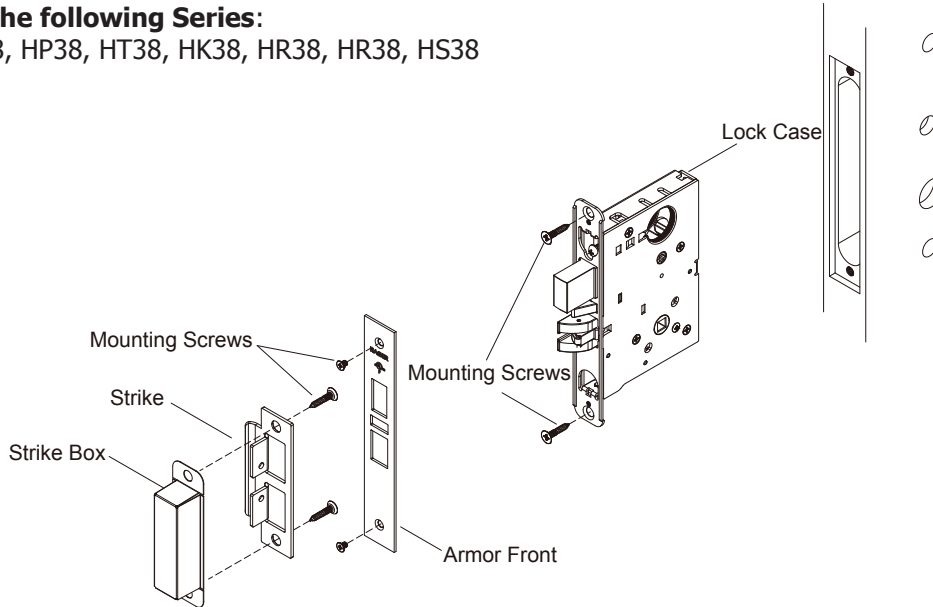


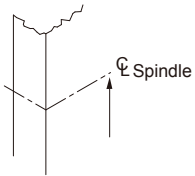
OVERVIEW

For use with the following Series:

HB38, HE38, HP38, HT38, HK38, HR38, HR38, HS38



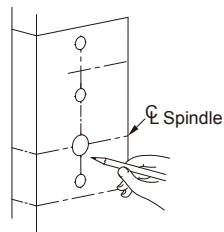
STEP 1: PREPARE DOOR AND JAMB



- A. Mark lockset centerline of lever.
- Measure desired height from finished floor.
 - Mark centerline on both faces and edge of door.

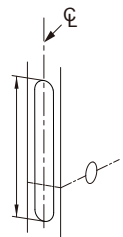
NOTE: If mortise for strike has already been made, measure 1-7/8" down from center of strike to locate center line of lever.

CAUTION: The outside and inside of door may require different preparation. Use proper template for outside (exterior or corridor) and inside of door.



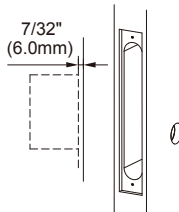
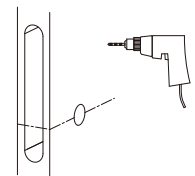
- B. Mark trim drill points.
- Align centerline of door template with centerline marked on door edge.
 - Based on the function of the lock, mark position of drill points.

- C. Mortise door edge (for wood doors).
- Align template with centerline of door edge.
 - Mark and drill two (2) 1" diameter holes, 4-1/2" deep.
 - Remove remaining wood until the mortise is 1" wide, by 6-3/4" high, by 4-1/2" deep.



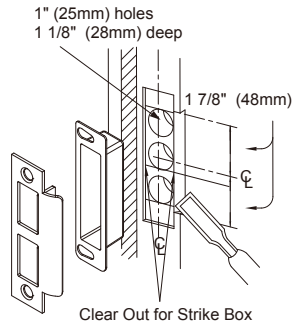
- D. Drill trim holes.

NOTE: To prevent splintering or damaging doors, drill through-holes halfway from each side of door.



- E. Create a recess for the lock face. The standard recess is 1-1/4" x 8" x 7/32".

STEP 1: PREPARE DOOR AND JAMB (continued)



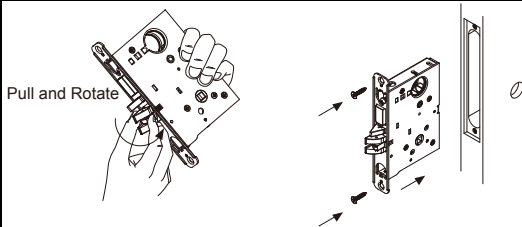
F. Install strike.

- i. Align centerline of strike template with the centerline marked on doorjamb. Be sure to match centerline on both strike and lock trim templates.
- ii. Bore 1" diameter holes into doorjamb, 1-1/8" deep.
- iii. Create a recess 5/32" deep for installation of the strike and dust box.

NOTE: Additional recess is required when using strike reinforcement.

- iv. Using a Phillips screwdriver and two (2) strike mounting screws, install strike into doorjamb.

STEP 2: INSTALL LOCK CASE



A. Change latch handing.

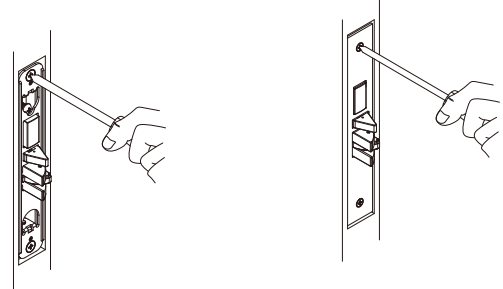
- i. Pull anti-friction tongue and latchbolt away from lock case.
- ii. Rotate latchbolt 180 degrees.

B. Install lock case.

- i. Install with the mounting screws slightly loose to allow for adjustment.

STEP 3: INSTALL ARMOR FRONT

- A. Tighten two (2) lock case mounting screws.
- B. Place armor front in position and install two (2) screws.



Continue with mating Escutcheon Installation Guide...