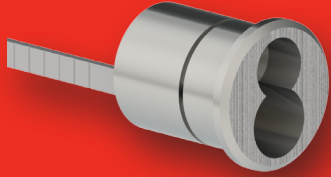
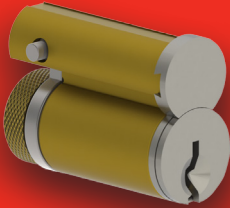
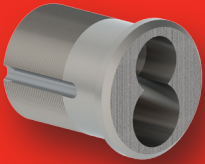


Large Format Interchangeable Cores, Cylinders & Locksets



Large Format Interchangeable Cores, Cylinders & Locksets

Keying Options:

- Keyed Alike (KA)
- Keyed Different (KD)
- Master Keyed (MK)
- Keyed to specific or existing number
- Key Markings (VKC)
- Core Markings (Visual or Concealed)
- Temporary construction cores available upon request

Note: Cores are furnished zero bit (OBC) from factory unless otherwise specified.

Hager Companies Large Format Interchangeable option is available for use with our Grade 1 cylindrical leversets, mortise locksets and exit device trims. Large Format Interchangeable Cores give you a quick and easy way to rekey without removing hardware from the door. This option is useful in situations where rekeying is frequent, and time is short.

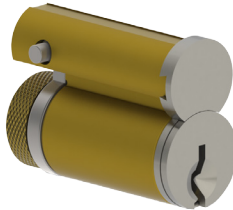


3400 Series Grade 1 LFIC Leverset



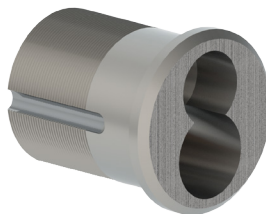
Finishes:	US3, US4, US10, US10B, US26, US26D
Lever Styles:	Archer, August, Withnell
Functions:	50 Entry/Office, 53 Entry, 70 Classroom, 73 Corridor, 80 Storeroom, 95 Intruder Classroom
Backset:	2-3/4" (70mm), 2-3/8" (60mm)
Door Thickness:	1-3/8" – 2" (35mm – 51mm)
Ordering Example:	3453 2-3/4" 26D WTN LF ASA LFIC
Note: All locksets supplied less core	

3919 - LFIC Core



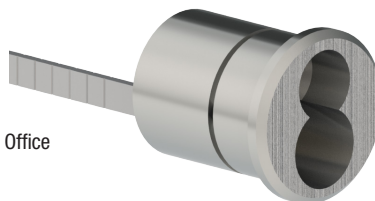
Finishes:	US4 and US26D
Specifications:	<ul style="list-style-type: none"> • 6-Pin Schlage C keyway • Includes 2 key blanks for zero bitted cores • Includes 2 cut keys for combined cores Note: Specify number of control keys needed
Ordering Example:	3919 US26D SCC OBC LFIC

3902 - LFIC Mortise Cylinder



Finishes:	US3, US4, US10, US10B, US26, US26D
Specifications:	<ul style="list-style-type: none"> • 1-1/2" cylinder length • When ordered with standard cam (2-639-7082), the Adams Rite cam (2-639-7083) is included in the box • Schlage L cam (2-639-7572) is standard on Hager 3800 Series mortise locks. Note: Core sold separately from housing
Ordering Example (Cylinder Only):	3902 MORT CYL US26D LFIC
Ordering Example (3800 Series Mortise Lock w/ Cylinder):	3853 SECT 26D WTN ICFULL6 LF

3901 - LFIC Rim Cylinder



Finishes:	US3, US4, US10, US10B, US26, US26D
Specifications:	Includes tailpiece, collar, mounting plate and break-off screws Note: Core sold separately from housing
Ordering Example:	3901 RIM CYL US26D LFIC



Hager Companies Corporate Office
139 Victor Street
St. Louis, MO 63104
314 772 4400 • 800 325 9995
www.hagerco.com