



## 4500 Series Decorative Lever Options

Hager is pleased to announce the addition of Exit Device Decorative Levers that will compliment the options on the 2300 Series Tubular and 3800 Series Mortise Locks.

### 4500 Series Escutcheon Trim



**Escutcheon:**

- 2-7/8" x 10-3/4" (73 mm x 273 mm)

**Finishes:**

- US3, US4, US10, US10B, US26, US26D

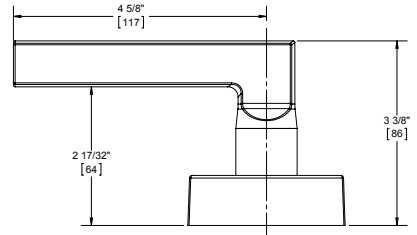
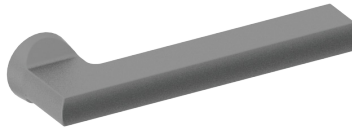
**Levers available on:**

- 4500 Series Trim (45BE, 45CE, 45DT, 45NL)
- 4500 Series Electrified (45ET)

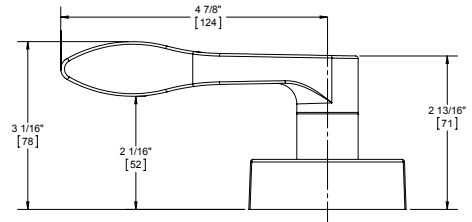
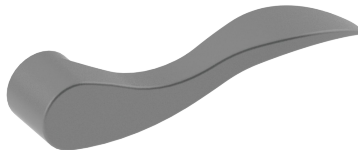
**Note:**

- Johnston and Warren Levers - Handed - must be ordered LHR or RHR

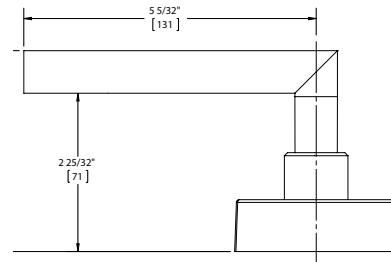
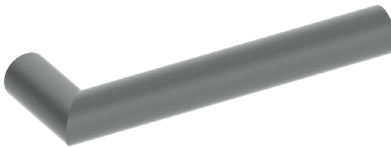
#### CHARLES LEVER



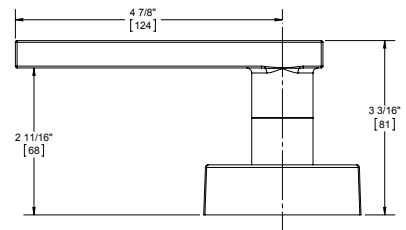
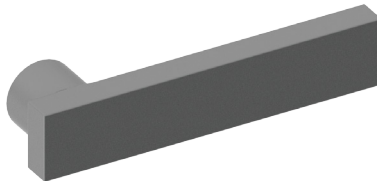
#### JOHNSTON LEVER



#### JOSHUA LEVER



#### LOUIS LEVER



#### WARREN LEVER

