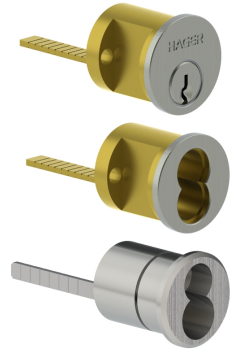


3901

Rim Cylinder



PRODUCT SPECIFICATIONS

DESCRIPTION:

- Available in Conventional, SFIC prep, or LFIC prep
- Specify Keyway on Conventional cylinders (Schlage C and Hager Keyways standard)
- Conventional cylinders are 6-Pin drilled, 5-Pin keyed (Hager keyways are 7-pin standard)
- Long tail piece included
- Machined from solid bar brass
- Shipped with collar, mounting plate and break-off screws

FINISH:

- US3, US4, US10, US10B, US26, US26D, BLK*
- *Black (BLK) finish is only available on conventional cylinders, Schlage C and Hager H keyways only.