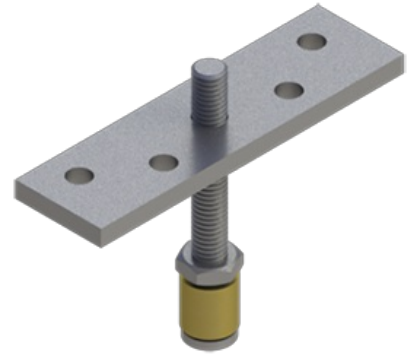


9121

Bottom Door Guide

Notes:

- Use with 9122 guide channel



PRODUCT SPECIFICATIONS

MATERIAL:

- Zinc Plated Steel with Bronze Roller

GUIDE:

- 1" (25.4 mm) x 3-1/2" (89 mm) x 3/16" (5 mm)

POST:

- 2-1/2" (64 mm) x 5/16" (8 mm)

PACKAGING:

- Bulk