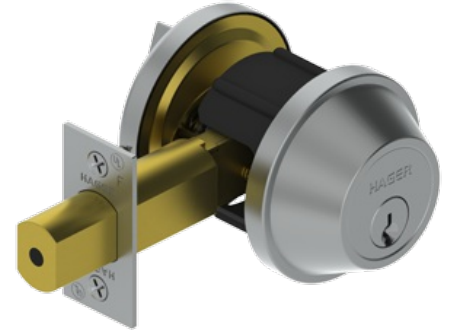


## 3200 Series Grade 2 Deadlock

### Applications:

- Auxiliary and primary locking
- Non-handed
- Conventional cylinder or Small Format Interchangeable Core housing available



## PRODUCT SPECIFICATIONS

### CERTIFICATIONS:

- BHMA Certified ANSI A156.5 Grade 2
- ANSI A250.13 Severe Windstorm Resistant Component
- UL/cUL Listed for all functions up to 3 hours for "A" label single doors
- UL10C Positive Pressure Rated
- UL10B Neutral Pressure Rated
- ADA - Thumbturn
- Lifetime warranty

### EXPOSED TRIM:

- Wrought brass, stainless steel or bronze

### MECHANISM:

- Steel, zinc dichromate plating

### KEYS:

- Two operating keys supplied per lock

### CYLINDERS:

- Brass 6-pin - Keyed Different - Schlage C Keyway - standard
- Cylinder drilled 6 pin, Keyed 5 pin - standard
- Other keying options, including keyed 6 pin, available from factory
- Zero bit cylinders will be 6 pin keyed - standard
- SFIC uncombined or combined, brass 6 pin or 7 pin cores sold separately

### DOOR THICKNESS:

- 1-3/8" - 1-3/4" (35 mm - 45 mm) - Standard
- 1-3/4" (45 mm) Only - 3214 SFIC and 3216
- 2" - 2-1/4" (51 mm - 57 mm) available for conventional cylinder - Must specify

### BACKSET:

- 2-3/4" (70 mm) - Standard
- 2-3/8" (60 mm) - Optional
- 2-3/8" - 2-3/4" (60mm - 70mm) adjustable backset supplied with 3220 and 3221 (not available on 3214 or 3215)

### LATCHBOLT:

- 1" (25 mm) Throw - Brass with concealed hardened steel roller to prevent sawing or cutting
- 2-1/4" x 1-1/8" (57 mm x 29 mm) square corner faceplate

### STRIKES:

- 3930 Square Corner, 1-1/8" x 2-3/4" (29 mm x 70 mm) with dustbox - Standard
- 3929 ASA Deadbolt Strike - Optional

### STANDARD DOOR PREP:

- Cylinder hole: 2-1/8" (54 mm) diameter (cross bore)
- Latch hole: 1" (25 mm) diameter (edge bore)

### FINISHES:

- US3, US4, US10, US10B, US26D, US32D

### FUNCTIONS:

- **14** - Double Cylinder
- **15** - Cylinder x Thumbturn
- **16** - Thumbturn x Occupancy Indicator
- **20** - Thumbturn only w/ blank plate
- **21** - Thumbturn Only (Replaced 3219),
- **22** - Retrofit Kit for use w/ 3221 or 3219

### OPTIONS:

- Split finish
- Additional deadbolts and strikes available