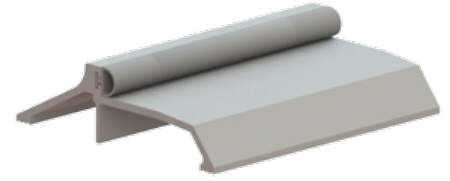


## 560S

3-1/2" Panic Threshold



**Application:**

- Use in conjunction with surface applied vertical rod exit device



### PRODUCT SPECIFICATIONS

**FINISHES:**

- MIL, DBA, GLD

**INSERTS:**

- V= Vinyl
- N= Neoprene, EDPM, or TPE
- S= Silicone
- W= Pile

**WIDTH:**

- 3-1/2" (88.9 mm)

**HEIGHT:**

- 1" (25.4 mm)

**OPTIONS:**

- Available with Sure-Step non-slip abrasive coating

**FASTENERS:**

- #10 x 1-1/2" sheet metal screws, other screw types and anchors available upon request

**DOOR CLEARANCE:**

- Allow 3/4"

**NOTES:**

- MIL finish thresholds are supplied with zinc plated screws
- Color anodized thresholds are supplied with screws plated to match