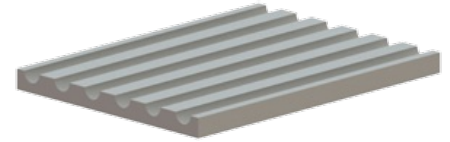


445S

3" Floor Plate Assembly Threshold



Application:

- Floor Plate components for modular threshold system
- Used primarily for extra wide door frames or to cover expansion joints or floor joists



PRODUCT SPECIFICATIONS

FINISHES:

- MIL, DBA, GLD

WIDTH:

- 3" (50.8 mm)

HEIGHT:

- 1/4" (6.4 mm)

OPTIONS:

- Available with Sure-Step non-slip abrasive coating
- Beveled edges are available

NOTES:

- Plates may be used fluted or smooth side up
- Plates and plate supports are furnished without holes and fasteners unless specified