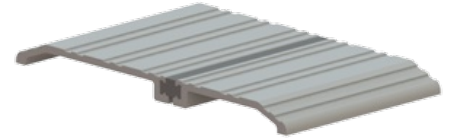


423S

7" Thermal Barrier
Saddle Threshold



Note:

- High strength thermal barrier is permanently bonded in place to block the transfer of heat or cold. To provide a seal, use in conjunction with a door bottom, sweep, shoe or bumper strip.



PRODUCT SPECIFICATIONS

FINISHES:

- MIL, DBA, GLD

WIDTH:

- 7" (177.8 mm)

HEIGHT:

- 1/2" (12.7 mm)

OPTIONS:

- Available with Sure-Step non-slip abrasive coating

FASTENERS:

- #10 x 1-1/2" sheet metal screws, other screw types and anchors available upon request

NOTES:

- MIL finish thresholds are supplied with zinc plated screws
- Color anodized thresholds are supplied with screws plated to match