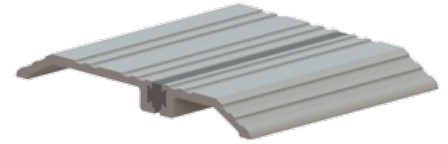


## 421S

### 5" Thermal Barrier Saddle Threshold



**Note:**

- High strength thermal barrier is permanently bonded in place to block the transfer of heat or cold. To provide a seal, use in conjunction with a door bottom, sweep, shoe or bumper strip.



## PRODUCT SPECIFICATIONS

**FINISHES:**

- MIL, DBA, GLD

**WIDTH:**

- 5" (127 mm)

**HEIGHT:**

- 1/2" (12.7 mm)

**OPTIONS:**

- Available with Sure-Step non-slip abrasive coating

**FASTENERS:**

- #10 x 1-1/2" sheet metal screws, other screw types and anchors available upon request

**NOTES:**

- MIL finish thresholds are supplied with zinc plated screws
- Color anodized thresholds are supplied with screws plated to match