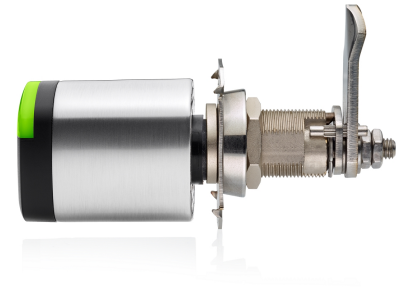


HS4 NEO HN11 Cam Cylinder HN11

Features:

- Fully integrated with the Hager powered by Salto platform
- Available for use with wireless and data-on-card platforms
- Wire Free - no drilling or wiring
- IP55 (standard, dust protection), IP66 (optional, dust and water resistant)
- All communication is encrypted and secure (AES128)
- High Security Protection - Tungsten anti-drill plates to protect wiring and reader area
- Locks stores up to 2,200 audit events and memory remains even if power fails
- Up to 4 million users and up to 65,000 openings per system
- In the event of a power failure, the access control system continues to function because of its battery-operated escutcheons and cylinders



PRODUCT SPECIFICATIONS

APPLICATION:

- Where a cam locking mechanism is in use
examples include post boxes, server racks, cabinets

LOCK TYPE:

- Cabinets and cupboards equipped with cam lock mechanisms

PROGRAMMABLE LOCK MODES:

- Programs can be customized by user and by opening
- Standard - locked at all times
- Automatic Opening - 8 pairs of "hands-free" timed lock and unlocks per day with holidays
- Toggle - present card to lock, present card to unlock
- Timed Toggle - present card to lock, present card to unlock depending on schedule
- Office Mode - free passage
- Timed Office - automatically locks at end time
- Automatic Opening + Office -

CYLINDER TECHNOLOGICAL SPECIFICATIONS

VISUAL FEEDBACK:

- Light ring
- Green indicates granted access
- Red indicates denied access

AUDIO FEEDBACK:

- Optional

EMERGENCY OPENING:

- with PPD

PLATFORMS:

- SVN
- BLUEnet
- KS

ID TECHNOLOGIES:

- Mifare (DESfire EV1, Plus, Ultralight C, Classic - ISO/IEC14443)
- BLE
- NFC (Android only)
- HID iClass®

MANAGEMENT SOFTWARE:

- Salto ProAccess SPACE

ADDITIONAL OPTIONS:

- IP66
- dust and water resistant rating, recommended for outdoor use

POWER SOURCE:

- 4 (4) ea LR1 Alkaline batteries (up to 130,000 transactions)

OPERATING TEMPERATURE:

- -7°F to 131°F (without condensation)

CYLINDER MECHANICAL SPECIFICATIONS

DIMENSIONS:

- 1.9" from mechanical cylinder face, 0.9" wide, 1.5" height

READER COLORS:

- White
- Black

FINISHES:

- US26D - Satin Chrome
- US26 - Bright Chrome
- US3 - Bright Brass
- US4 - Satin Brass
- Black Satin Chromium
- BioCote available

WARRANTY:

- 1-Year

CERTIFICATIONS:

- BHMA - A156.5
- UL - UL10C (3-hour)