

## 3550 Entry/Office Lockset Lever

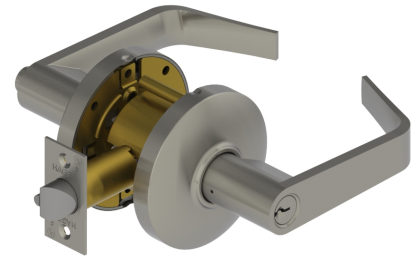
### Grade 2 Cylindrical Lever

#### Applications:

- Standard duty commercial
- No exposed mounting screws
- Non-handed
- Conventional cylindrical or Small Format Interchangeable Core housing available

#### Function:

- 50 - Entry/Office (ANSI F82A)



## PRODUCT SPECIFICATIONS

#### CERTIFICATIONS:

- BHMA Certified ANSI A156.2, Series 4000, Grade 2
- ADA Compliant ANSI A117.1 Accessibility Code
- UL/cUL Listed for all functions up to 3 hours "A" label single doors (for double doors application, UL/cUL Listed when used with 3/4" latchbolt)
- ANSI A250.13 Severe Windstorm Component
- Miami-Dade County, Florida NOA# 17-1226.23, Exp. Aug. 16, 2022. Must specify.
- UL10C Positive Pressure Rated
- UL10B Neutral Pressure Rated
- Lifetime warranty

#### EXPOSED TRIM:

- Levers: cast zinc
- Rose: wrought brass or stainless steel

#### LOCK CHASSIS:

- Heavy gauge steel, zinc dichromated for corrosion resistance
- Free wheeling (levers only)
- Removable thru-bolts
- Failure to install thru-bolts and removable screw posts voids BHMA certification, UL Rating, and Warranty.

#### ROSE DIAMETER:

- 3-11/32" (85 mm) levers

#### KEYS:

- Two operating keys supplied per lock

#### CYLINDERS:

- Brass - Keyed Different
- C Keyway
- Other keying options, including keyed 6-pin, available from the factory
- Interchangeable Core
- Brass 6 & 7 pin
- Uncombined & Combined
- Drilled 6-pin, Keyed 5-pin
- Standard
- Small Format Interchangeable Core housing available
- SFIC uncombined or combined, brass 6- or 7-pin sold separately

#### DOOR THICKNESS:

- Levers: 1-3/8" - 2" (35 mm - 51 mm)

#### BACKSET:

- 2-3/4" (70 mm) - Standard
- 2-3/8" (60 mm) - Optional
- 3-3/4" (94 mm) - Optional
- 5" (128 mm) - Optional

#### LATCHBOLT:

- 1/2" (13 mm) Throw
- Stainless steel
- 1-1/8" x 2-1/4" (25 mm x 57 mm) Faceplate for 2-3/4" (70 mm) backset
- Deadlocking latchbolt prevents manipulation when door is closed; keyed functions only
- 1" x 2-1/4" (25 mm x 57 mm) Faceplate for 2-3/8" (60 mm) backset

#### STRIKES:

- 3935 ASA 1-1/4" x 4-7/8" (32 mm x 124 mm) strike
- Standard

#### FINISHES:

- US3, US4, US10, US10B, US26, US26D (Levers only)

#### FUNCTIONS:

- 50 - Office

#### OPTIONS:

- Lead Lined (Levers Only)
- Tactile Knurling (Levers Only)
- Split Finish
- Additional latchbolts and strikes available

#### STANDARD DOOR PREP:

- 2-1/8" diameter (cross bore)
- Latch hole: 1" diameter (edge bore)

#### LEVER OPTIONS:

- Archer, August, Withnell levers

#### EPD:

- [3500 Cylindrical Lock Environmental Product Declaration](#)