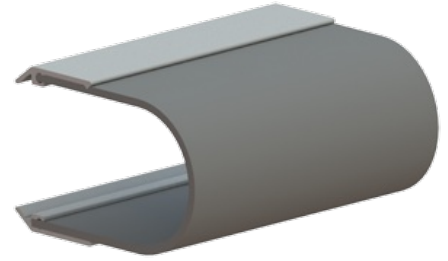


## 776S

### Door Bottom | Meeting Stile

#### Notes:

- Lengths up to 48" are supplied 1/2" over their stated size to allow for fitting.
- Lengths over 48" are supplied 1" over size.
- "Cut to exact length" may be specified.
- Constructed of strong extruded 6063-T5 aluminum.
- MIL finish weatherstripping is supplied with zinc plated screws
- Color anodized weatherstripping is supplied with screws plated to match
- Stainless steel weatherstripping is supplied with stainless steel screws



## PRODUCT SPECIFICATIONS

#### FINISHES:

- DBA, GLD, CLR

#### INSERTS:

- N=Neoprene, EDPM or TPE

#### FASTENERS:

- #6 x 5/8" Pan Head sheet metal screws

#### SIZE:

- Length: 1 5/8" (42 mm)

#### EPD:

- [Door Bottom Environmental Product Declaration](#)