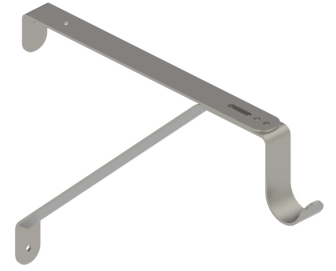


1799

Shelf Bracket - Adjustable

Notes:

- Adjustable shelf and rod support
- Heavy gauge steel construction embossed for added strength
- Holds 1-3/8" (35 mm) diameter rod
- Supports 12" (305 mm) shelf
- Bulk with screws
- 3/4" (19 mm) adjustability



PRODUCT SPECIFICATIONS

MATERIAL:

- Steel ANSI B04051

FINISH:

- White enamel

FASTENERS:

- Two (2) #8 x 5/8" PPH tapping screws and two (2) #10 x 1-1/2" PPH tapping screws