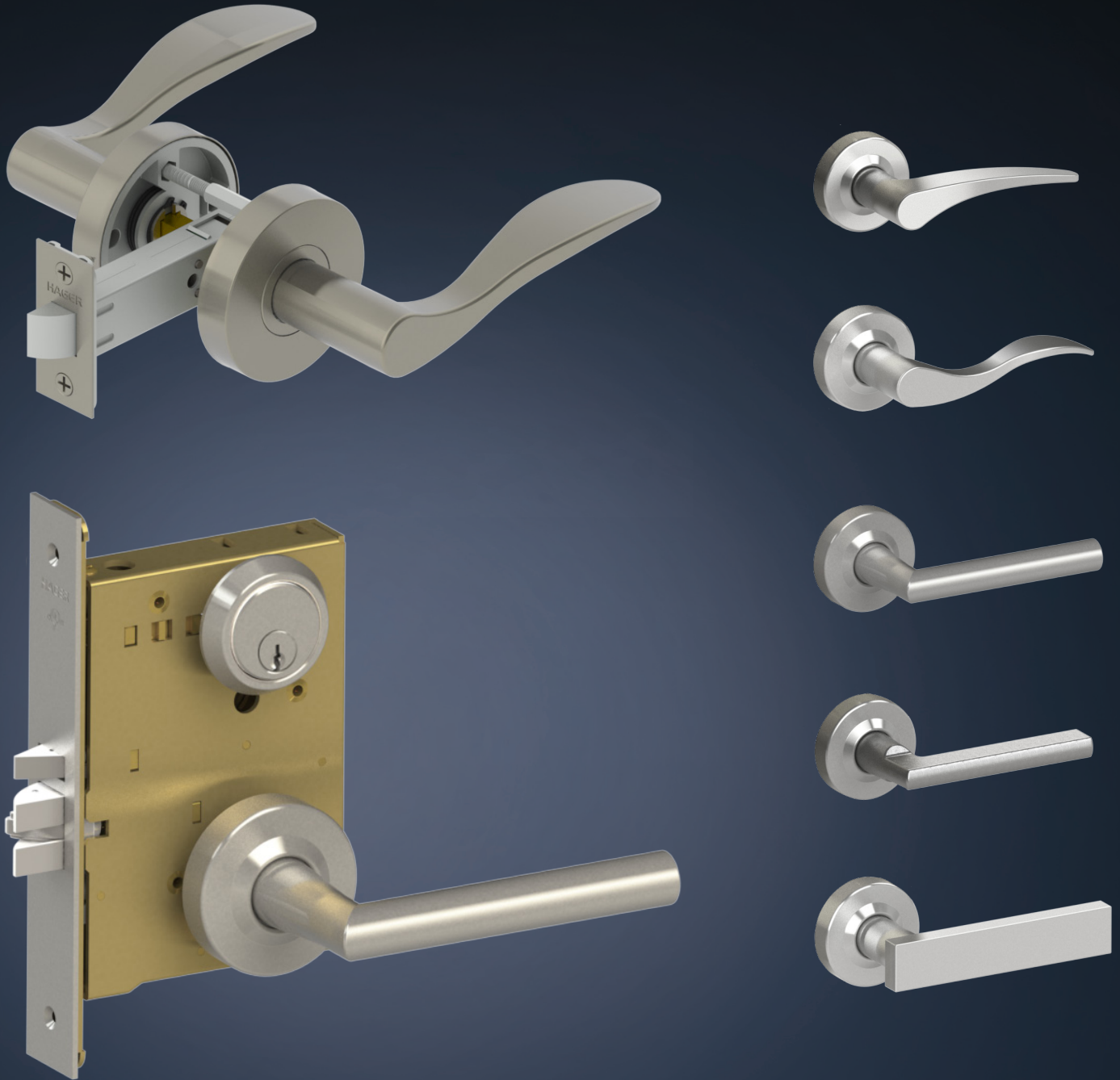


Decorative Locksets



Entry and Interior Decorative Locksets,
Ideal for Multi-Family Applications



2300 and 3800 Series Decorative Locksets

Headliners:

- Available in both entry (3800) and interior (2300)
- 5 year warranty on 2300, Lifetime on 3800
- No exposed mounting screws
- Field Reversible (exception of 2317 JHN and WRN)
- Available in popular finishes

Advantages:

- Ability to “suite” entire job with same lever design
- Thru-bolt design for ease of installation (2300)

Applications:

- Multi-Family
- Hospitality
- Multi-Use Facilities

Exposed Trim: Levers: Solid Cast Zinc
Rose: Stainless Steel

Installation: Template provided
Includes Thru-bolts (2300)
Field Reversible

Door Handing: Non-handed (except for JHN and WRN functions)
3800 shipped LHR, Easily Field Reversible

Functions: **2300 Series**
10 Passage, 17 Dummy, 27 Double Dummy, 40 Privacy
3800 Series
10 Passage, 17 Dummy, 27 Double Dummy, 40 Privacy, 44 Privacy with Cointurn, 50 Office, 53 Entry, 56 Corridor, 57 Classroom Security, 61 Apartment, 70 Classroom, 80 Storeroom, 81 Storeroom with Deadbolt, 82 Institution, 96 Privacy with Indicator

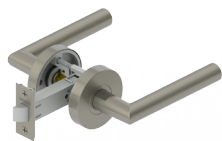
Backset: 2-3/4" Standard, 2-3/8" Optional

Finishes: US3, US10B, US15, US26, US26D

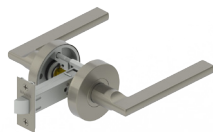
Lever Options: Charles, Johnston, Joshua, Louis, and Warren

Options: Split finish available

2300 and 3800 Series Decorative Lever Styles



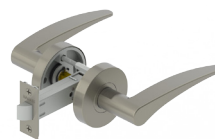
Joshua (JOS)



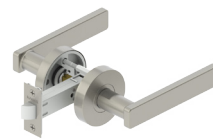
Charles (CHA)



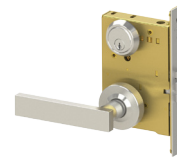
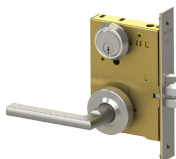
Johnston (JHN)



Warren (WRN)



Louis (LOU)



Hager Companies Corporate Office
139 Victor Street
St. Louis, MO 63104
314.772.4400 • 800.325.9995
www.hagerco.com