



TRICOM – FULL MORTISE  
 TEMPLATE HINGES  
 ELECTRIC THROUGH WIRE  
 AND MONITOR TYPE ETM  
 SIZES: 5 x 4, 5 x 4 1/2, 5 x 5

Template No. T529

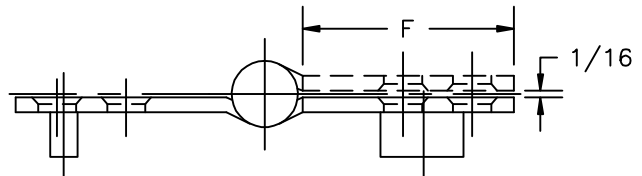
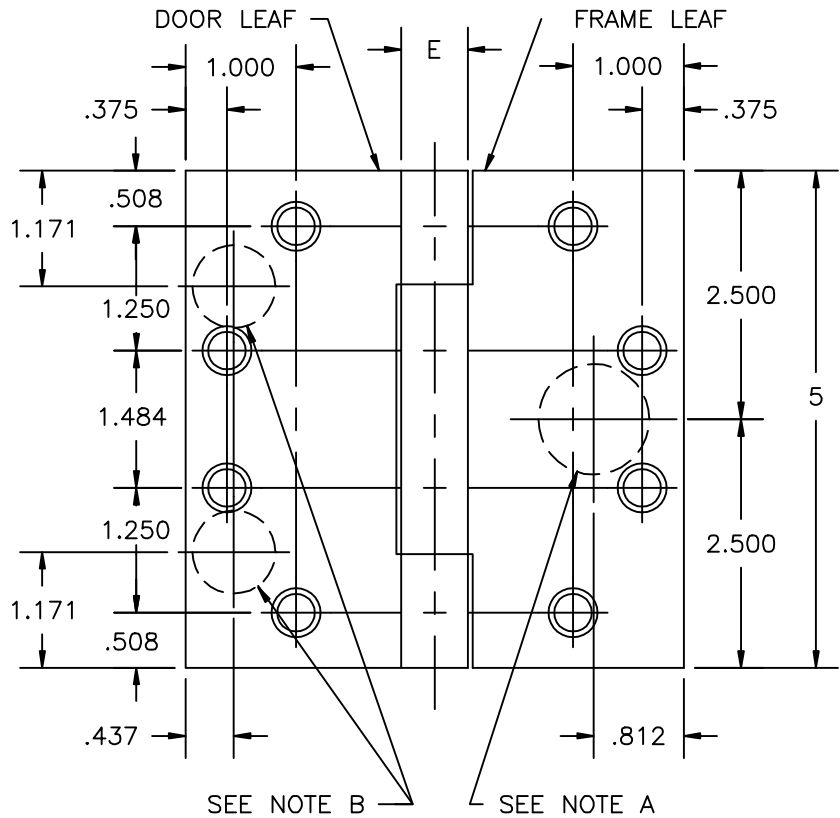
No.	REVISION	BY	DATE
1	ECO CT05035	RAM	8-15-05

ETM MAXIMUM  
 ELECTRICAL RATING  
 SWITCH  
 VOLTS 30V DC  
 AMPERES .500A  
 CONTACT THROUGH WIRE  
 VOLTS 48V DC  
 AMPERES  
 3.5A CONTINUOUS CURRENT  
 16.0A CURRENT INRUSH  
 (300 MILLISECONDS)

DRILLING INSTRUCTIONS

NOTE A:  
 DRILL AND DEBURR  $\phi$  1" HOLE IN FRAME REINFORCEMENT FOR THROUGH WIRES.

- NOTE B:
1. NON-HANDED INSTALLATION—DRILL AND DEBURR TWO (2) 3/4" HOLES IN DOOR REINFORCEMENT PLATE FOR THROUGH WIRES.
  2. RIGHT HAND INSTALLATION—DRILL AND DEBURR  $\phi$  3/4" HOLE FOR THROUGH WIRES IN DOOR REINFORCEMENT PLATE ON BOTTOM LEFT.
  3. LEFT HAND INSTALLATION—DRILL AND DEBURR  $\phi$  3/4" HOLE FOR THROUGH WIRES IN DOOR REINFORCEMENT PLATE ON UPPER RIGHT.



-DO NOT SCALE-

CATALOG NUMBER		METAL GAUGE	(E) KNUCKLE DIAMETER	(F) DISTANCE FROM EDGE OF LEAF TO SWAGE LINE		
STEEL HINGES	NON-FERROUS HINGES			5 x 4	5 x 4 1/2	5 x 5
AB700-ETM	AB800-ETM	.145	5/8	1 5/8	1 7/8	2 1/8
AB750-ETM	AB850-ETM	.190	47/64	1 9/16	1 13/16	2 1/16

ALL DIMENSIONS ARE IN INCHES.

Machine Screw Size— 12-24 x 1/2" F.H.

Wood Screw Size— No. 12 x 1 1/4" F.H.

NOTE: This hinge is intended to be used in the center position.

Hospital type and round corner template hinges conform to the above screw size and location. They are designated by "HT" and "RC" to catalog number.

Hager template hinges are made in size, gauge and with screw holes located to conform to ANSI-A156.7.



HAGER RESERVES THE RIGHT TO MAKE DESIGN CHANGES WITHOUT NOTICE. CALL HAGER ENGINEERING AT 1-800-325-9995 FOR LATEST REVISION DATE OF TEMPLATE.

HAGER COMPANIES  
 139 VICTOR STREET  
 P.O. BOX 12300  
 ST. LOUIS, MISSOURI 63157-0300