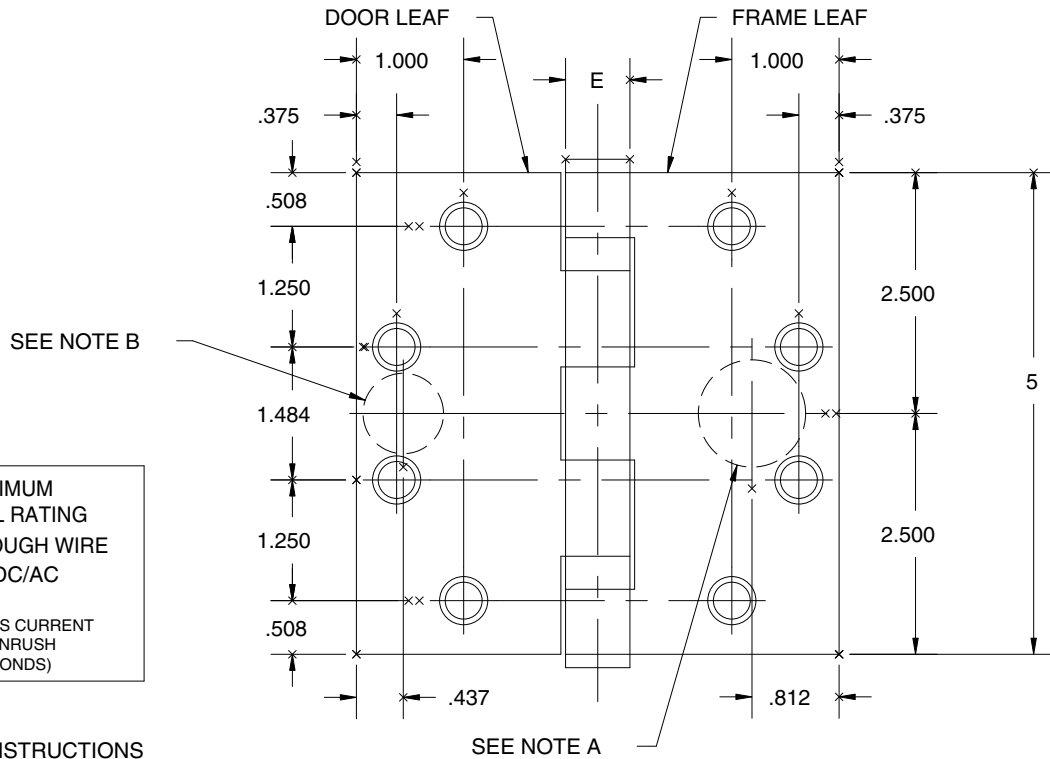


**FULL MORTISE
TEMPLATE HINGES ELECTRIC
THROUGH WIRE TYPE ETW**

SIZES: 5 x 4, 5 x 4 1/2, 5 x 5

Template No. T 526

Rev. '96

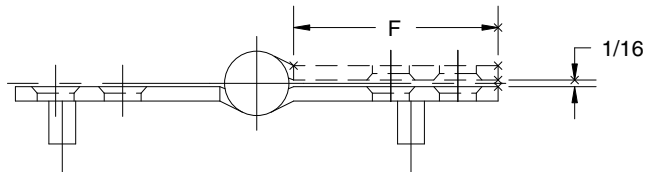


**ETW MAXIMUM
ELECTRICAL RATING**
CONTACT THROUGH WIRE
VOLTS 48V DC/AC
AMPERES
3.5A CONTINUOUS CURRENT
16.0A CURRENT INRUSH
(300 MILLISECONDS)

DRILLING INSTRUCTIONS

NOTE A:
DRILL AND DEBURR ϕ 1"
HOLE IN FRAME REINFORCEMENT
FOR THROUGH WIRES.

NOTE B:
DRILL AND DEBURR ϕ 3/4"
HOLE IN DOOR REINFORCEMENT
FOR THROUGH WIRES.



-DO NOT SCALE-

CATALOG NUMBER		METAL GAUGE	(E) KNUCKLE DIAMETER	(F) DISTANCE FROM EDGE OF LEAF TO SWAGE LINE		
STEEL HINGES	NON-FERROUS HINGES			5 x 4	5 x 4 1/2	5 x 5
BB1279-ETW	BB1191-ETW	.145	41/64	1 5/8	1 7/8	2 1/8
BB1168-ETW	BB1199-ETW	.190	47/64	1 9/16	1 13/16	2 1/16

ALL DIMENSIONS ARE IN INCHES.

Machine Screw Size- 12-24 x 1/2" F.H.

Wood Screw Size- No. 12 x 1 1/4" F.H.



NOTE: This hinge is intended to be used in the center position.

Hospital type and round corner template hinges conform to the above screw size and location. They are designated by "HT" and "RC" to catalog number.

Hager template hinges are made in size, gauge and with screw holes located to conform to ANSI-A156.7.

HAGER RESERVES THE RIGHT TO MAKE DESIGN CHANGES WITHOUT NOTICE. CALL HAGER ENGINEERING AT 1-800-325-9995 FOR LATEST REVISION DATE OF TEMPLATE.

HAGER COMPANIES
139 VICTOR STREET
P.O. BOX 12300
ST. LOUIS, MISSOURI 63157-0300

Template No. T 526