



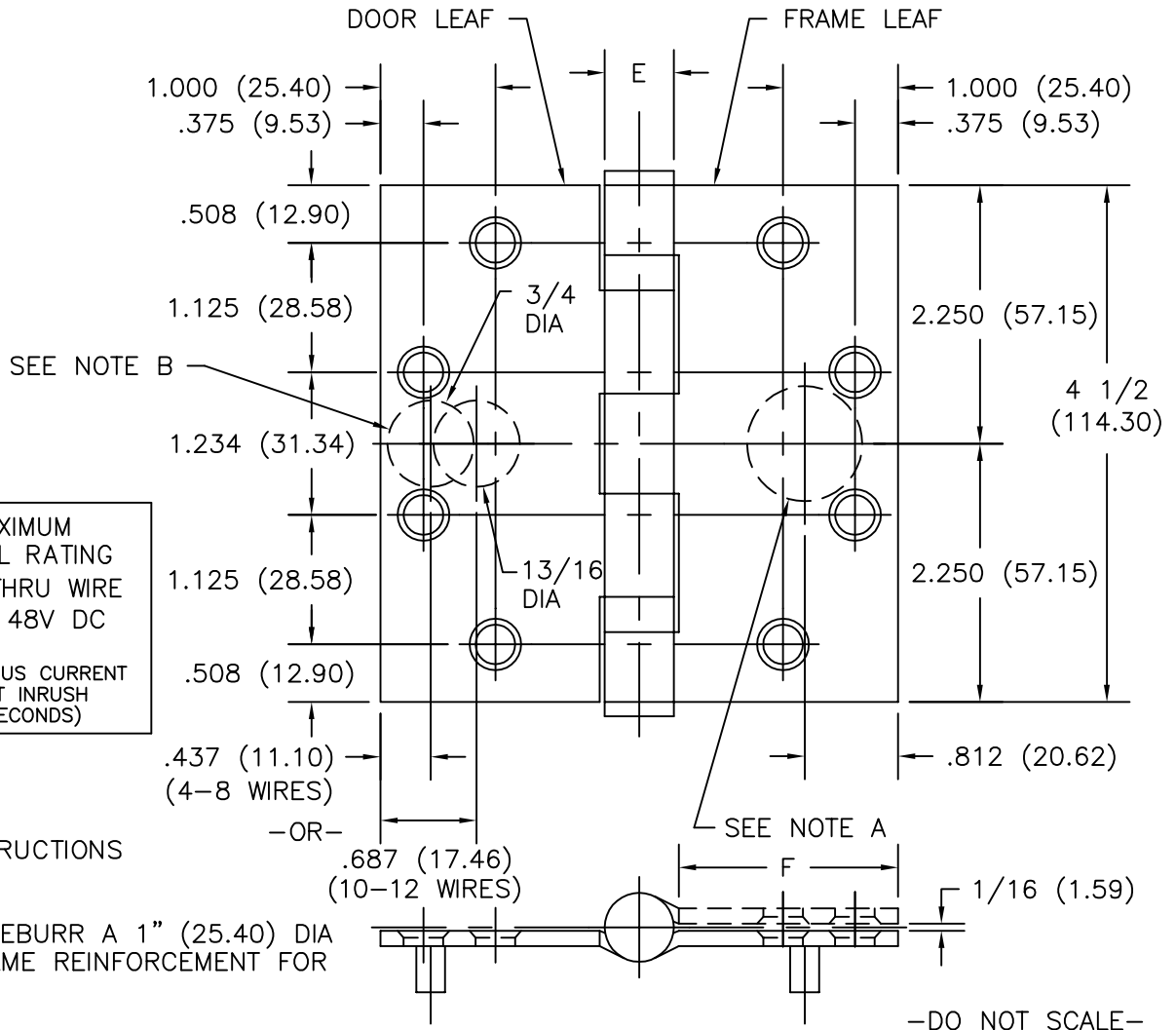
FULL MORTISE

Template No. T521

TEMPLATE HINGES ELECTRIC
THRU WIRE TYPE ETW

No.	REVISION	BY	DATE
1	ECO CT05035	RAM	8-12-05
2	ECO CT07016	DW	4.12.07

SIZES: 4 1/2 x 4 -- 4 1/2 x 4 1/2
(114.30 x 101.60) (114.30 x 114.30)



ETW MAXIMUM
ELECTRICAL RATING
CONTACT THRU WIRE
VOLTS: 48V DC
AMPERES:
3.5A CONTINUOUS CURRENT
16.0A CURRENT INRUSH
(300 MILLISECONDS)

DRILLING INSTRUCTIONS

NOTE A:
DRILL AND DEBURR A 1" (25.40) DIA
HOLE IN FRAME REINFORCEMENT FOR
THRU WIRES.

NOTE B:
DRILL AND DEBURR A 3/4" (19.05) DIA HOLE FOR 4-8 THRU WIRES -OR-
A 13/16" (20.64) DIA HOLE FOR 10-12 THRU WIRES IN DOOR REINFORCEMENT.

CATALOG NUMBER		METAL GAUGE	(E) KNUCKLE DIAMETER	(F) DISTANCE FROM EDGE OF LEAF TO SWAGE LINE	
STEEL HINGES	NON-FERROUS HINGES			4 1/2 x 4 (114.30 x 101.60)	4 1/2 x 4 1/2 (114.30 x 114.30)
BB1279-ETW	BB1191-ETW	.134 (3.40)	39/64 (15.48)	1 5/8 (41.28)	1 7/8 (47.63)
BB1168-ETW	BB1199-ETW	.180 (4.57)	45/64 (17.86)	1 9/16 (39.69)	1 13/16 (46.04)

ALL NON-BRACKETED DIMENSIONS ARE IN INCHES, ALL BRACKETED DIMENSIONS ARE IN MILLIMETERS.

Machine Screw Size- 12-24 x 1/2" F.H.
Wood Screw Size- No. 12 x 1 1/4" F.H.



NOTE: This hinge is intended to be used in the center position.

Hospital type and round corner template hinges conform to the above screw size and location. They are designated by "HT" and "RC" to catalog number. Hager template hinges are made in size, gauge and with screw holes located to conform to ANSI-A156.7.

HAGER RESERVES THE RIGHT TO MAKE
DESIGN CHANGES WITHOUT NOTICE. CALL
HAGER ENGINEERING AT 1-800-325-9995
FOR LATEST REVISION DATE OF TEMPLATE.

HAGER COMPANIES
139 VICTOR STREET
P.O. BOX 12300
ST. LOUIS, MISSOURI 63157-0300