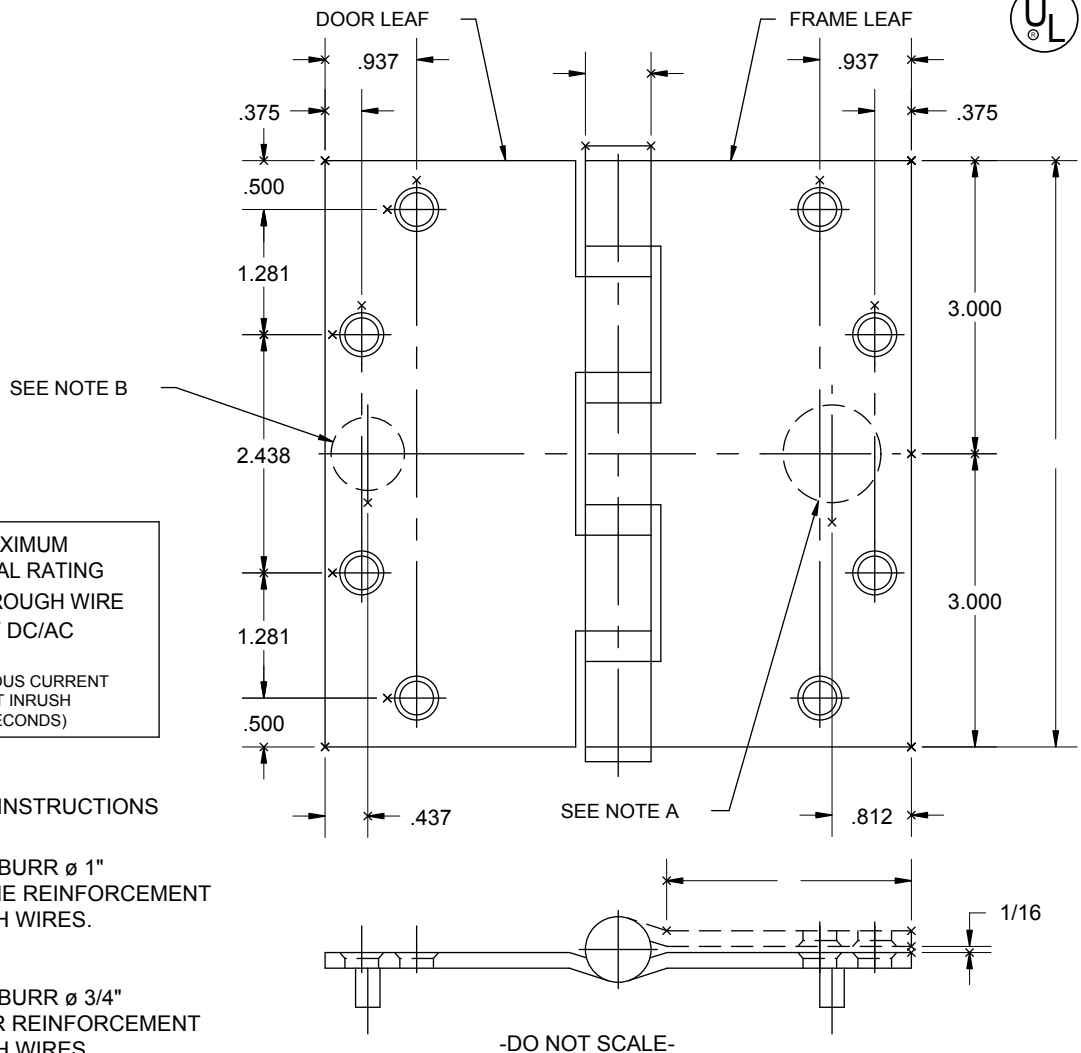


# FULL MORTISE TEMPLATE HINGE ELECTRIC THROUGH WIRE TYPE ETW

Template No. T632

ORIG. 9-6-01 RAM

SIZE: 6 x 6



ETW MAXIMUM  
ELECTRICAL RATING  
CONTACT THROUGH WIRE  
VOLTS 48V DC/AC  
AMPERES  
3.5A CONTINUOUS CURRENT  
16.0A CURRENT INRUSH  
(300 MILLISECONDS)

**DRILLING INSTRUCTIONS**

**NOTE A:**  
DRILL AND DEBURR  $\varnothing$  1"  
HOLE IN FRAME REINFORCEMENT  
FOR THROUGH WIRES.

**NOTE B:**  
DRILL AND DEBURR  $\varnothing$  3/4"  
HOLE IN DOOR REINFORCEMENT  
FOR THROUGH WIRES.

CATALOG NUMBER		METAL GAUGE	(E) KNUCKLE DIAMETER	(F) DISTANCE FROM EDGE OF LEAF TO SWAGE LINE
STEEL HINGES	NON-FERROUS HINGES			6 x 6
BB1168-ETW	BB1199-ETW	.203	3/4	2 35/64

ALL DIMENSIONS ARE IN INCHES.

Machine Screw Size- 1/4-20 x 1/2" F.H.

Wood Screw Size- No. 14 x 1 1/2" F.H.



**NOTE:** This hinge is intended to be used in the center position.

Hospital type and round corner template hinges conform to the above screw size and location. They are designated by "HT" and "RC" to catalog number.

Hager template hinges are made in size, gauge and with screw holes located to conform to ANSI-A156.7.

HAGER RESERVES THE RIGHT TO MAKE DESIGN CHANGES WITHOUT NOTICE. CALL HAGER ENGINEERING AT 1-800-325-9995 FOR LATEST REVISION DATE OF TEMPLATE.

**HAGER COMPANIES**  
139 VICTOR STREET  
P.O. BOX 12300  
ST. LOUIS, MISSOURI 63157-0300

Template No. T632

-DO NOT SCALE-